

The Canadian Philatelist

Le philatéliste canadien



H.M. Queen Elizabeth The Queen Mother 1900-2002

\$5.00 - 5,00\$



COLLECTION CANADA 2001

THE COMPLETE YEAR IN STAMPS

TOUS LES TIMBRES DE L'ANNÉE

\$45.95



341564

Canada Post presents the right gift for any collector on your list. The year's entire stamp releases, including all sold-out issues, in one beautifully bound volume packed with beautiful full-colour

photographs and illustrations. Collection Canada 2001 is the perfect complement to any collection or a great start to a new one.

Postes Canada vous propose un cadeau qui fera la joie de tous les collectionneurs. Dans un seul ouvrage sont réunies toutes les émissions de timbres de l'année, y compris celles qui sont épuisées. Ce livre relié

est richement orné de photos et d'illustrations en couleur. Collection Canada 2001 est un complément idéal à toute collection et un excellent moyen d'en entamer une.



VISIT YOUR LOCAL POST OFFICE OR CALL
1-800-565-4362
(7 A.M. - 7 P.M. ET MONDAY TO FRIDAY)

CANADA POST POSTES CANADA
From anywhere... De partout...
to anyone... jusqu'à vous

EN VENTE À CERTAINS COMPTOIRS POSTAUX.
VOUS POUVEZ AUSSI COMMANDER AU
1 800 565-4362
DU LUNDI AU VENDREDI, DE 7 H À 19 H, HE.



Go with the proven leader

CHARLES G. FIRBY AUCTIONS 1 • 248•666•5333

The Canadian Philatelist Le philatéliste canadien

Journal of The ROYAL PHILATELIC
SOCIETY OF CANADA

Revue de La SOCIÉTÉ ROYALE DE
PHILATÉLIE DU CANADA

Volume 53, No. 4 Number / Numéro 311 July - August 2002 Juillet – Août



FEATURE ARTICLES / ARTICLES DE FOND

- ▶ The Queen Mum, Queen Elizabeth the Queen Mother
by George Pepall 174
- Double Print Errors on Canadian Stamps
by Joseph Monteiro 177
- The Sea Floor Post Office
by Ken Lewis 182
- The Date of Issue of the Two-Cent
Registered Letter Stamp
by George B. Arfken and Horace W. Harrison 184
- The Early History of Envelopes
by Dale Speirs 185
- ▶ Blueberries and Mail by Sea
by Captain Thomas Killam 188
- The Surprises of Philately
by Kimber A. Wald 190
- ▶ Canada's 1937 George VI Issue
by J.J. Edward 193
- Jamaican Jottings
by "Busha" 197
- The Short Story Column
by "Raconteur" 200
- Guidelines for Judging Youth Exhibits
Directives pour Juger les Collections Jeunesse 202
- Early German Cancels
by "Napoleon" 207
- In Memoriam – Harold Beaupre 209

DEPARTMENTS / SERVICES

President's Page / La page du président	211
Letters / Lettres	214
Coming Events / Calendrier	215
Chapter Meetings / Réunions des clubs membres	216
Membership Reports / Rapports des membres	219
One Last Word / Un dernier mot	220
Departments and Committees / Services et Comités	221
Alphabetical List of Advertisers / Liste des annonceurs	221
Classifieds / Annonces classées	222

The Cover / Page couverture:

Elizabeth Bowes-Lyon, a commoner, did not expect to become Queen when she married the Duke of York in 1923. That all changed in 1936 when King Edward VIII abdicated to marry, as he announced to the world, "the woman I love" and his younger brother, the Duke of York, became King George VI.

Elizabeth Bowes-Lyon, une roturière, ne s'attendait certes pas à devenir reine lorsqu'elle épousa le duc d'York en 1923. C'est pourtant ce qui arriva en 1936, alors que le roi Edouard VIII abdiqua, annonçant au monde qu'il marierait celle qu'il aimait, cédant ainsi le trône à son jeune frère, le duc d'York, qui devint le roi George VI.

We acknowledge the financial support of the Government of Canada through the Publication Assistance Program (PAP) toward our mailing costs.

Nous remercions le gouvernement du Canada pour son appui financier pour nos frais de poste par l'entremise du Programme d'assistance aux publications (PAP).

The Canadian Philatelist (ISSN 00-45-5253) published bimonthly by Philaprint Inc. PO Box 100, First Canadian Place, Toronto, Ont., M5X 1B2. Printed and produced in Canada by Trajan Publishing Corporation. ©Philaprint Inc. 2002. Opinions expressed herein are those of individual authors only and neither the Publisher nor The Royal Philatelic Society of Canada accepts responsibility for them. Manuscripts should be typewritten or submitted on computer disk. Only original articles will be considered. Books and Literature for review should be submitted to the editor. None of the editor, the Society, the publisher nor any officer or director either incurs any liability for any article or manuscript or any item accompanying such article for photography, all of which are at the sole risk of the person submitting same. Indexed in the Canadian Magazine Index and available on-line in the Canadian Business and Current Affairs Database. The Publisher reserves the right to decline any advertising and acceptance does not imply endorsement of the product or service.

Subscription price for members of The Royal Philatelic Society of Canada \$25.00 per year. This amount is included in membership fees and the members automatically receive the journal. Non-members \$30.00 per year. Changes of Address, undeliverable copies and orders for subscriptions should be sent to PO Box 929, Station Q, Toronto, Ont., M4T 2P1. Return Postage Guaranteed. Publications Mail Registration No. 09828.

Le philatéliste canadien (ISSN 00-45-5253), bimensuel publié par Philaprint Inc., C.P. 100, First Canadian Place, Toronto, Ont., M5X 1B2. Fait et imprimé au Canada par Trajan Publishing Corporation. ©Philaprint Inc. 2002. Les opinions émises sont celles des auteurs seulement et ni l'éditeur, ni La Société royale de philatélie du Canada n'accepte leur responsabilité. Les manuscrits doivent être écrits à la machine ou soumis sur disquette d'ordinateur. Seuls les articles originaux seront pris en considération. Les livres et articles à examiner doivent être soumis au rédacteur en chef. Aucune responsabilité n'est acceptée par le rédacteur, la Société, l'éditeur ou tout membre du bureau ou du comité directeur, pour tout article, manuscrit ou tout autre document, comme des photographies, accompagnant ledit article ou manuscrit. La personne soumettant l'article sera seule responsable. Figure à l'Index des magazines canadiens et est disponible sur Internet sous les bases de données de la Canadian Business and Current Affairs. L'éditeur se réserve le droit de refuser toute publicité; l'acceptation n'implique en rien une recommandation du produit ou du service.

Le prix de l'abonnement est de 25 \$ par an pour les membres de La Société royale de philatélie du Canada. Ce montant est inclus dans la cotisation et les membres reçoivent automatiquement le magazine. L'abonnement pour les non-membres est de 30 \$ par an. Les changements d'adresse, les exemplaires non-livrés et les demandes d'abonnement doivent être envoyés à : C.P. 929, Succursale Q, Toronto, Ont., M4T 2P1. Le port de retour est garanti. Le numéro d'enregistrement des éditions est : 09828.

THE ROYAL PHILATELIC SOCIETY OF CANADA LA SOCIÉTÉ ROYALE DE PHILATÉLIE DU CANADA

Patron Her Excellency The Right Honourable Adrienne Clarkson
C.C., C.M.M., C.D., Governor General of Canada
Président d'honneur Son Excellence le très honorable
Adrienne Clarkson. C.C., C.M.M., C.D., Gouverneur général du Canada

2002-2003

BOARD OF DIRECTORS – CONSEIL D'ADMINISTRATION EXECUTIVE - L'EXÉCUTIF

President – Président:

Charles J.G. Verge, FRPSC
Box 2788, Station D Ottawa, ON K1P 5W8
vergec@sympatico.ca

1st Vice President – 1er Vice-Président:

J.Edward "Ted" Nixon
255 Cortleigh Boulevard Toronto, ON M5N 1P8
ted.nixon@mercer.com

2nd Vice President – 2ième Vice-Président:

Rick Penko
Box 1425 Winnipeg, MB R3C 2Z1
rick_penko@hotmail.com

Treasurer – Trésorier:

John Keenlyside
622-470 Granville Street Vancouver, BC V6C 1V5

Secretary – Secrétaire

Harry Sutherland, RDP, FRPSC
10 Summerhill Ave. Toronto, ON M4T 1A8
vggfoundation@on.aibn.com

Past President – Président Sortant:

Keith Spencer, FRPSC
5005 Whitemud Road Edmonton, AB T6H 5L2
krs2@ualberta.ca

Directors – Les Directeurs

Frank Alusio, Etobicoke, ON
Leon Balian, Dollard Des Ormeaux, QC
balianstamps@yahoo.com
François Brisse, Beaconsfield, QC
Raymond Ireson, Roxboro, QC
Yvan Latulippe, St-Joachim-de-Shefford, QC
yvan.latulippe@sympatico.ca
Kenneth Magee, Clinton, ON kmagee@tcc.on.ca
J.Graham McCleave, Fredericton, NB
mccleave@nbnet.nb.ca
George Pepall, Kitchener, ON pepall@golden.net
John M. Powell, FRPSC, Edmonton, AB
mpowel3@attglobal.net
William G. Robinson, FRPSC, Vancouver, BC
Elizabeth Sodero, Halifax, NS sodero@ns.sympatico.ca
Ann Triggler, Clarence, NY (USA) atriggler@buffalo.edu

Editor – Éditeur

Tony Shaman
P.O. Box 43103, Eastwood Square Kitchener, ON N2H 6S9
shaman@smokesignal.net

Associate Editor – Éditeur Associé

Grégoire Teyssier gteyssier@hotmail.com

National Office – Bureau National

Andrew D. Parr Executive Director / Directeur exécutif
P.O. Box / C.P. 929, Station, Succ Q, Toronto, ON M4T 2P1
Tel/Tél: (416) 979-8874
Toll Free / Sans frais: 1-888-285-4143
Fax/Télécr: (416) 979-1144
info@rp.org www.rp.org

THE QUEEN MUM

Queen Elizabeth, the Queen Mother

By George Pepall

The year 2002 is bound to linger in the memories of the members of the Royal Family as a mix of “delight and dole”, as Claudius put it in Shakespeare’s Hamlet. The joy of the Commonwealth-wide celebration of Her Majesty Queen Elizabeth II’s Golden Jubilee has already been sharply tempered by the loss of her sister, Princess Margaret Rose. Now her 101-year-old mother, Elizabeth The Queen Mother, is gone. The popular press and electronic media had a field day in reviewing the life and times of the Queen Mother and her subsequent funeral. It is worth noting that no death of any individual in recent memory, commoner or royal, has occasioned such a worldwide outpouring of affection tinged with heartfelt grief as that expressed over the last weeks and months since the Queen Mum’s death on March 30, 2002.



“When she was young,” wrote royal biographer Hector Bolitho, “the horizon of the Queen’s life was not wide. The story of a charming girl: human, prone to mischief, neither an intellectual nor a dunce. From the days when she played cricket with her brothers at Glamis to when she was no longer impish enough to climb to the roof and pour water on guests as they arrived at the castle, her life moved towards a quiet, untroubled ideal: seriousness and balance leavened by a quick sense of humour. There lies her ap-



peal to the women of Great Britain (and the world).”

Few stamps portrayed the Duchess of York before her ascent to the throne with her husband King George VI when his older brother, the enigmatic King Edward VIII, abdicated the throne in 1936. An exceptional example is Newfoundland Scott #208, a rich brown stamp that uses the same image of the young duchess as that shown in the Coronation stamps of May 12, 1937. Illustrated more frequently as Queen to her kingly husband, she appeared in the Silver Wedding omnibus issue of January, 1949 in front of her consort, not behind him, a most unusual positioning in any example of royal portraiture. This arrangement is seen as his tribute to her importance to him in sharing what suddenly became the heavy burden of office on the throne of Great Britain and her Empire.

She made no recorded indication of an interest in the royal stamp collection, begun under the zealous influence of her father-in-law, King George V. However, Elizabeth Bowes-Lyon, later the Duchess of York, then Her Majesty Queen Elizabeth, and most recently the Queen Mother, was known to have a collector’s instinct, acquired as a result of the British inclination toward salvaging any and all forms of scrap during World War II. It was during those dark years that she and her husband, the reluctant King George VI, earned the devotion of their subjects for their refusal to leave London during the worst days of The Blitz. Al-

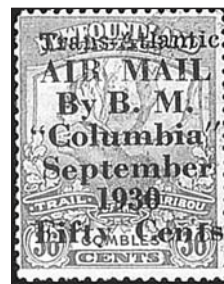
legedly the Queen “pounced on a piece of bone left by a fox, fragments of old iron, bottles galore, tins and wire and shards of china.” The story goes that she returned in triumph one day, dragging behind her a large piece of rusty old iron to add to the royal dump. It turned out to be a plough belonging to a neighbouring farmer: “and will Your Majesty graciously give it back to him, please, at once, as he can’t get on without it. “The alternate version is that the plough was quietly returned to its owner without the Queen’s knowledge, which seems rather more likely.” (Mortimer, p.197) If a modern-day topical collector were to try to assemble stamps that depict the interests and hobbies of the Queen Mum, he would have plenty to choose from: Maybe a depiction of modern art, or landscapes and portraits in general. How about antiques, the collectible of the rich and famous? Then there are always the royal dogs. They would have to be of the domestic variety to suit her, despite her interest in the hunt. Likely Welsh Corgis. Do representations of picnics, fishing expeditions and the out-of-doors exist on stamps? If so, they would have a place in her collection. This was a pleasure acquired, no doubt, at Glamis Castle, her ancestral home in Scotland. Even less likely to be found on stamps would be scenes of acting and charades, or word games and



crossword puzzles, those most British of pastimes! (Do they exist on stamps?) Hard to imagine, perhaps, but The Queen Mother would have enjoyed a postage reminder of pianos, and songs sung to piano accompaniment. Apparently she was not shy about raising her voice in song, under

EASTERN AUCTIONS LTD.

Canada's Most Trusted Auction House



For over 25 years we have been offering philatelic buyers the opportunity to acquire some of the best B.N.A. material on the market, as well as top quality Commonwealth, United States and Worldwide.



You've spent years building your collection. When the time comes to sell, you need an Auction house that will spend the time and has the resources to give your collection the attention it deserves. Let us achieve maximum results for you.



For a complimentary catalogue or to inquire on how to consign to our Public Auctions, please call or fax Toll Free in North America.
Tel: 1 (800) 667-8267 Fax: 1 (888) 867-8267



Eastern Auctions Ltd.

P.O. Box 250, Bathurst, NB, E2A 3Z2, Canada

Web Site: www.easternstamps.com

Tel: 1 (506) 548-8986 • Fax: 1 (506) 546-6627



the right circumstances. Then there is that most royal of associations and pastimes, even obsessions: horses, horse-racing and horse-breeding. She is known to have attended The Queen's Plate in Toronto more often than any royal before or since. The horse auctions at breeding ranches as far from England as Lexington, Kentucky, were known to have had royal agents present to make bids.

One of her many biographers anticipated the passing of The Queen Mum in poetic terms: It may be increasingly difficult for (a centenarian) to climb into a helicopter, but once airborne the flight is effortless, skimming over empty spaces and uneasy silences, over neglect and indifference, landing only where the lights shine and the climate is entirely dependable. One day she will simply spin out of sight, emerging God knows where to carry on with the angels. (Mortimer, p. 267) ♣

Bibliography

Bolitho, Hector. *George VI*. London: Eyre and Spottiswoode, 1937.

Mortimer, Penelope. *Queen Elizabeth: A Life of the Queen Mother*. London: Viking Books, 1986.



In 1980, many British Commonwealth countries issues stamps marking the Queen Mother's 80th birthday.



Intriguing Cinderella

The intriguing cinderella item submitted by Dave Cooper, Sr., through the courtesy of Jane Davies of the Fort Erie Historical Museum merits further research. Does any reader have any information about this 10-stamp pane?

Double Print Errors on Canadian Stamps

By Joseph Monteiro

Introduction

Double, or more numerous, print errors are a distinct variety of printing errors. These types of printing errors on Canadian stamps became popular with collectors with the discovery of the two 8-cent Royal Military College stamps because the doubling had a remarkable visual effect. Canadian philatelists knew of the existence of these types of errors long before the discovery of the above examples from the double and/or triple surcharges that were discovered on the King George V Admiral stamps of 1926, and on the first Canadian air mail stamp of 1932.

This article examines double or more (referred to as double) print errors. First to be reviewed are the causes of double print errors; second, we will review the types of double print errors that have occurred; and third, we will indicate the well-known double print errors that occurred in the Queen Elizabeth II Era (i.e., 1953 to-date). Several concluding remarks will summarize our findings.

Before proceeding, we should define a double print error: It is a doubling of a surcharge, an overprint, a design, or part of a design or attachment, or perforated initials. Included in this group are also stamps with a print of another stamp or surcharge over the correct stamp. Excluded in this group are doubling effects caused from a flaw in the plate. Double print errors have sometimes been referred to as “ghost print” errors. It is not known why the term ghost was used. Perhaps the double print was so faint that it appeared to philatelists as a ghost-like image.

Causes of Double Print Errors

Single Printing Process Using Multiple Plates: The origin of double print errors first occurred on Canadian stamps when they were printed with a surcharge

or pre-cancel overprint. During this early period, stamps were still printed using a single printing process (engraving) however a second plate was needed to surcharge, or overprint, the stamp. The simplest explanation for the double print is that the plate making the surcharge or overprint made a second impression.

But this explanation need not always be accepted as can be seen from the controversy surrounding the double print of the precancelled bars on the 6-cent Prime Minister Lester B. Pearson stamp. The Canadian Bank Note Company (CBNC) believed that this doubling resulted from an offset, rather than a double printing. CBNC in a letter to Canada Post stated: “Our Research and Development Department has done extensive investigation and concludes that the doubling of the image was caused by the transfer of ink from an improperly dried waste sheet onto the printing blanket. The blanket was subsequently transferred to the production sheet. This type of defect is rare and would be limited to a very few sheets. Our Litho Department is aware of this problem and, with the procedures now used, it is unlikely to recur.” Philatelists have been a bit skeptical about the above explanation. They contend, as a result of further analysis, that it resulted from a double printing. The reason is the failure of the double precancelled overprint to show up clearly on the tagging.^[1] It is believed that the precancelled overprinted stamps were tagged and then fed into the machines for a second precancel overprint. Why the stamps did not receive a second tagging remains unanswered.

Single Printing Process Using A Single Plate: Double prints can also occur when a single printing process is used with a single plate. This means that it can occur regardless of whether the stamps were printed by engraving or by some other method such as lithography. The simplest explanation for the double print

is that the printing plate made a second impression. As a result there is a distinct visible effect on the design of the stamp. In the case of engraved or embossed stamps, there is also a distinct effect on the reverse or gum side of the stamp. A second explanation is that there was a slight movement of the paper during the printing process that then touched the engraved plate. In such cases, the engraving effect will not be visible on the reverse or gum side. A third possible reason is because the paper or the repellent fluid used in the lithographic process created a smudge or spread the ink as on blotting paper. A fourth possible explanation of double print errors was provided by the Director of Retail marketing at Canada Post, Mr. R. W. Eyre in the case of the 8-cent Royal Military Stamp issue. “Regarding the 1976 8c Royal Military Stamp issue, it is the opinion of the printer, Canadian Bank Note Company, from an examination of the photocopy you supplied, that the stamps have a ghost or double impression. They feel this double impression was caused by a wet waste sheet put through the press a second time. This sheet could have gone through off register and transferred some of its ink to the blanket so that when the regular postage paper was put through, it picked up the wet image.”^[2]

Single Printing Process Using A Single Plate but Requiring Attachments: A single printing process using a single plate can also result in double-print errors when the production of the stamp requires the use of some type of attachment on the stamp or when it results in parts of the stamp being cut-off. The requirement of an attachment during the printing process or after can cause a double or even triple placement of the attachment such as a hologram. The reason is that the machine applying the hologram or attachment may have been repeated because of some malfunction. In the case of a cut-off, it could have occurred two or more times on the

stamp. Both of these requirements result in what can be regarded as a double print.

Multiple Printing Processes: Multiple printing processes also result in double print errors. Most of the double print errors found today fall into this group. The multiple printing process (engraving and lithography, embossing and lithography, etc.) requires the use of more than one plate. The double print can occur with any of the plates. It can also occur from both plates but such errors are unusual as it would really involve not one but two errors: once from the first plate and once from the second plate. The reason for this error is similar to the explanation provided for such errors resulting in a single printing process.

Types of Double Print Errors

There are five basic types of double print errors:

- i) A double print of a surcharge or inscription or design or non scratch-off surface on the stamp;
- ii) A double print of another stamp design or surcharge;
- iii) A double attachment of a hologram or glued attachment;
- iv) A double application of scratch-off surface; and
- v) A double cut-off or perfin on a stamp.

We will briefly describe each one.

i) A double print of a surcharge or inscription or design on the stamp

To date, a number of double print errors have been discovered. Some are quite impressive; others less so. These double print errors largely followed the development of printing technology. The first group of double print errors results from overprints or surcharges. The double print errors in this group for the Queen Elizabeth II era are not numerous as very few Canadian stamps have appeared with surcharges or overprints. However, a few from this era that have attracted the attention of collectors are those with overprints for government use or those that were precancelled such as the 1-cent Cameo for government use such as the precancelled 6-cent Pearson, for example. The second group of well-known double print errors results from a single printing process using a single plate. Such print errors include the 15-cent RCMP stamp, the two 8-cent Royal Military College stamps, the 38-cent Parliament Building stamp, the 43-cent Canadian Flag stamp and 45-cent

Canadian Flag stamp. A third group of double print errors results from a multiple printing processes. In this group are included stamps such as the \$1 Fundy stamp and the \$2 Kluane stamp. A table following this section will include more examples that I have seen or heard about. One or two stamps from each of these sub-groups will be described in greater detail as follows.



1-cent Cameo overprinted 'G'

In the first sub-group, the two well-known double print errors to be described are: a) the 1-cent Cameo overprinted 'G' stamp; and, b) the 6-cent Prime Minister Pearson stamp. The 1-cent Cameo overprinted 'G' stamp was found with a double overprint of the 'G' by K. Bileski of Winnipeg. He found these errors when he purchased part of a pane of 100 stamps (i.e., 80 stamps) from the Post Office. Though the stamps were overprinted in sheets of 6 panes of 100, there has never been any acknowledgment of the whereabouts of the other panes. Mr. Bileski claims that they could have been destroyed by the Post Office. The 6-cent Prime Minister Pearson stamp consists of a double overprint of the precancelled bars. It is not easily noticeable with the naked eye, but can be seen under a magnifying glass. Since the stamps were overprinted in sheets of 600 stamps, it is believed that at least one sheet of 600 stamps (or 6 panes of 100 stamps) was found.

In the second sub-group, the two well-known double print errors that will be described are: a) the 15-cent RCMP stamp; and, b) the two 8-cent Royal Military College stamps. The 15-cent RCMP stamp consists of a double print of the entire design of the stamp. This stamp was printed using lithography and the double design is quite distinct. It was found

on imperforate stamps and its discovery led to quite a stir as it was reported that "the R.C.M.P. are investigating the existence of these errors and an arrest is imminent." The two 8-cent Royal Military College stamps consists of the doubling of the entire lithographic designs and its discovery also led to quite a stir as the doubling was truly remarkable. These errors were found in



6-cent Prime Minister Pearson

Québec and four panes of 50 or 200 stamps in total (or 100 stamps of each of the se-tenant stamps) are known to exist. The numbers agree as the stamps were printed in sheets of four panes of fifty stamps.

In the third sub-group, the two well-known double print errors that will be described are: a) the 50-cent Prairie Street Scene stamp; and, b) the \$1 Glacier stamp. The 50-cent Prairie Street Scene error can be described as the inscription of the stamp printed twice. The design of this stamp was printed by lithography and the inscription by steel engraving. The double printing was caused by the steel engraving. The doubling caused by the steel engraving appears below the normal inscription. Since the inscription appears

not only at the top but also at the bottom of the stamp (and elsewhere) the doubling also appears in the white border



8-cent Royal Military College 50-cent Prairie Street Scene



**15-cent RCMP
\$1 Glacier**



10-cent on 15-cent RCMP.

ii) A double print of another stamp design, or surcharge

Stamps with the design of a second additional stamp printed on it is an unusual occurrence. There has been only one Canadian stamp that has been reported with a double print from another stamp design. It is the 15-cent RCMP stamp with the 10-cent design overprinted on it. This double design was found on imperforate stamps and as indicated earlier, its discovery led to quite a stir. This error

was never sold over the post office counter. As indicated by one source, "Imperfs with the design doubled or with the 10c design printed on top of the 15c are probably printer's waste which were never sold over the post office counter." While it was reported that the R.C.M.P.

was investigating the matter in 1973, no reports of arrests have been brought to my attention. Thus, the old adage that the Mounties always gets their man may not always be true. Caution should always be exercised in the purchase of these type of errors.

iii) A double attachment of holograms or glued attachments

A stamp with a hologram or a glued attachment may also be found with an additional application of a hologram or attachment. The additional hologram or attachment may be shifted substantially from the original or may be just marginally shifted. To date, I have not seen such an error but I believe that they can occur and would fall into this group of double prints. Holograms that have been applied on the stamp in the wrong position have been offered for sale by a leading auctioneer.

iv) A double application of a scratch-off surface or a non-scratch-off surface

A double application of a scratch-off surface on a stamp would result in a double print. The scratch-off surface instead of being applied once could have been applied twice causing the double error. I

have not seen such errors on Canadian stamps as none has been produced with a scratch-off or non-scratch-off surface. The only application of a non scratch-off surface in Canada to collectibles was to the \$20, \$50, \$100 and \$1000 currency bills of the 1980s and 1990s. A number of countries such as Finland and Hong Kong have printed stamps with such scratch-off or non-scratch-off surfaces.

v) A double cut-off or double perfin on a stamp.

The application of perforated initials on a stamp twice can also be considered a double print. The double perforated initials may appear either as elongated perforations reflecting the second strike or the strike may be a few millimetres apart creating a distinct double impression. I am not aware of any stamps with double perforated initials that have been issued for the use of the Canadian federal government. However, these errors do exist in the case of Australian stamps. Perfinns have also been used by a number of private companies or bodies of the provincial governments.

Well-Known Double Print Errors of the Queen Elizabeth II Era (1953-2001)

Some well-known major double print errors that I am aware of are listed below. It should be emphasized that this table is by no means complete. Minor double print errors are not reported nor are double print errors due to plate flaws.

Table 1 – Double Print Errors of the Queen Elizabeth II Era (1953-2001)

Cat. No.	Value	Prtr.	Perf.	Method	Form	FDI	Type of tagging	Plate No.	Type of error
387a	5c Seaway	CBN	12x12	Steel Eng.	Pane (50)	June 26, 1959	Untagged	BC	Double print Insc.
046i	1c Cameo	CBN	12x12	Steel Eng.	Pane (100)	1963	Untagged	BC	Double 'G overprint
422	5c Manitoba	CBN	12x12	Steel Eng.	Pan (50)	April 28, 1965	Untagged	BC	Double print
463	15c Bylot Is.	CBN	12x12	Steel Eng.	Pane (50)	Feb. 8, 1967	Untagged	P1, P2	Double print Insc.
539i	6c Papineau	CBN	12x12.5	Steel Eng.	Pane (50)	May 7, 1971	Tagged two sides	BC	Double print
540i	6c Hearne	CBN	12x12.5	Steel Eng.	Pane (50)	May 7, 1971	Tagged two sides	BC	Double print
614	10c on 15c RCMP	AP	11x11	Litho.	Pane (50)	March 9, 1973	Tagged two sides	BC	Double print
614	15c on 15c RCMP	AP	11x11	Litho.	Pane (50)	March 9, 1973	Tagged two sides	BC	Double print

625i	6c Christmas	AP	12x12.5	Steel Eng.	Pane (100)	Nov. 9, 1973	Tagged two sides	BC	Double print
591i	6c Pearson	CBN	12x12.5	Steel Eng.	Pane (100)	April 10, 1974	Tagged two sides	P1	Double pre cancel bars
648ii	8c UPU	CBN	12x12.5	Steel Eng.	Pane (50)	Oct. 9, 1974	Tagged two sides	BC	Double print
676i	8c Christmas	CBN	12x12.5	Steel Eng.	Pane (50)	Oct. 22, 1975	Tagged two sides	BC	Double print
677i	8c Christmas	CBN	12x12.5	Steel Eng.	Pane (50)	Oct. 22, 1975	Tagged two sides	BC	Double print
692ii -693ii	8c RMC	CBN	12x12	Litho.	Se-Tenant Pane (50)	June 1, 1976	Untagged	BC	Double print
742	12c Christmas	CBN	12x12.5	Steel Eng.	Pane (50)	Oct. 26, 1977	Tagged two sides	BC	Double print
766i	8c Resources	CBN	12x12	Litho.	Se-Tenant Pane (50)	May 19, 1978	Tagged	BC	Double print
818i	8c Authors	CBN	12x12	Litho.	Se-Tenant Pane (50)	May 3, 1979	Tagged	BC	Double print
913i	60c Canada '82	CBN	12x12	Litho.	Se-Tenant Pane (50)	May 20, 1982	Untagged	BC	Triple print
1165iii	38c Parliament	CBN	13.1x13.6	Litho.	Pane (100)	?	Tagged four sides	BC	Double print
723aii	50c Prairie St.	CBN	13.3x13.3	Steel Eng. & Litho	Pane (50)	Dec. 1978	Tagged two sides	BC	Double print
726	\$1 Fundy	CBN	13.3x13.3	Steel Eng. & Litho	Pane (50)	?	?	?	Double Inscription
727	\$2 Kluane Park	CBN	13.3x13.3	Steel Eng. & Litho	Pane (50)	?	Untagged	BC	Double Inscription
934	\$1 Glacier	?	13.3x13.3	Steel Eng. & Photo	Pane (25)	?	Untagged	BC	Double Inscription
1360	43c Flag	?	?	Litho.	Pane (100)	?	Tagged four sides	?	Double print
1360	45c Flag	CBN	13.3x13	Litho.	Pane (120)	Feb. 2, 1998	Tagged four sides	BC	Double print

Prtr.=Printer.

Perf.=Perforation.
BC=Blank Corner.

CBN=Canadian Bank Note Co. Ltd.
P=Plate. Engr.=Engraving.

AP= Ashton-Potter Limited.

Concluding Remarks

We have looked at double print errors as one type of printing error in this article. The causes of double print errors and the types of double print errors were also examined. In addition we also documented a list of the well-known double print errors in the Queen Elizabeth II Era.

In a past article I also indicated that there are various major types of printing errors, inverts, design errors, colour errors, print shift errors, printing on gum side errors, tagging errors, and other printing errors. One of the basic purposes for this article is to examine one type of printing error: the double print errors. In an earlier article, I described how one can study philately in a more logical and ana-

lytical manner so as to place it on a sound foundation. The above description is part of the structure that we outlined. By concentrating on such sub-groups in as logical a fashion as possible we can make philately a more interesting hobby especially for those wishing to study the subject further. This will enable philatelists to enrich the study of philately, make it a more enjoyable hobby, and stimulate further research. It could also encourage philatelists to specialize by collecting a specific sub-group of printing errors. ♣

Bibliography and Endnotes

1. "It is possible that the 6c double precancelled sheets which had already been precancelled and tagged could have been

fed again into the machine for a second overprint. They received a proper impression where there was no tagging. Where there was tagging, the overprint did not take or showed up very faintly." See Walburn, H. G., et al., *Canada Precancel Handbook*, The Unitrade Press, Chapter 28, p. 145.

2. See Bileski, Kasimir, "The 1976 Royal Military College Double Print error," in *Some Canadian Stamp Errors*, 1982, p. 15. It should be noted that since this publication appeared double print errors have appeared on stamps of UK.

3. Monteiro, Joseph, *Printing and Perforating Errors of Postage Stamps in Canada (1953-1997) – An Analysis*, pp. 1-397.

W A N T E D

We can sell your Canadian or foreign stamp collections or accumulations on consignment for the nominal fee of 10%.

Please enquire before forwarding material.

R.F. NARBONNE

Telephone 1-613-257-5453

Call Toll Free 1-800-247-5619

GREENWOOD STAMP COMPANY

216 Mailey Drive
Carleton Place, Ontario
K7C 3X9

– Since 1962 –

The Sea Floor Post Office

By Ken Lewis

This unusual event started out in 1939 as part of the expedition organized by the Bahamian Government and the American Field Museum. Its main intention was to record and study the natural environment of the undersea world surrounding the Bahamas.

It was thought that it would be in the public interest to record the various forms of life for cinemas throughout the world. The leader of the expedition was to be John Ernest Williamson from Norfolk, Virginia, USA. Mr. Williamson had proven himself worthy of the task, being a noted author, explorer, and a pioneer of undersea photography. The expedition was to last three years, until 1942.

Mr. Williamson left his position as a cartoonist for the *Virginian Pilot* to work full-time on the design of the apparatus that he would use for the expedition. His idea was to use the flexible tube, invented by his father Charles Williamson, which was originally designed for deep-sea salvage and submarine engineering. It consisted of a tube with an observation sphere at one end. The Photosphere, as this observation sphere became known, consisted of a steel container with one very large glass window. From this window an uninterrupted view of the undersea world could be seen due to it being able to rotate 360° about the base of the tube. The anticipated view is illustrated on the left of the cover shown in Figure 1. The tube was about four feet in diameter and could be lengthened or shortened like



Figure 1.

an accordion. Being flexible it would absorb the movement of the waves and currents without disturbing the sphere at its base. The tube would connect this sphere (used to photograph the undersea scenes) to a surface vessel. An illustration showing the operation of this invention in use can be seen on the left of the cover in Figure 2. One benefit of the tube was that everyone visiting the Photosphere could do so without experiencing any pressure change. Even when the Photosphere was many hundreds of feet below the surface no discomfort would be experienced. The expedition was given the nickname of The Hole in the Sea. There were banks of lights used to illuminate great areas of the undersea world and make viewing appear to be in natural light.

Before this expedition could become a reality it had to raise funds from private sources, and to this end the following

names were active sponsors of the historic event:

Sir Francis Peek, Bt.; The Hon. Sir Harry Oakes, Bt., MLC; Hon. H. G. Christie, MEC, MHA; Mr. R. T. Symonette, MHA; Mr. Sidney Farington, JP, and Mr. A. Wenner-Green.

Fortunately the money did materialise and the project was born.

Within the Photosphere was to be a post office, overseen by Mr. J. H. Peet, the Bahamian Postmaster General, who made Mr. Williamson the honorary postmaster of the Photosphere. Both the post office and the interior dimensions of the Photosphere measured 6 feet by 10 feet and, therefore, limited the number of visitors.

Because of its unusual position a special postmark was created for the post office at the bottom of the sea. The design had two concentric oval lines (the outer one being the thicker of the two) containing around the inner edge the words SEA FLOOR/Bahamas and the date across the centre using the month/day/year format. The restriction imposed on the use of this post office was that only visitors to the Photosphere were allowed to use the facility. This was strictly enforced because Mr. Peet had been inundated with requests from people all over the world for First Day Covers from this post office. As this regulation also applied to the Postmaster General his secretary worked full-time returning the money and requests that kept pouring in.

The post office was officially open for only two days during the whole three years. The first occasion was on 16th August 1939, when the post office was inau-



Figure 2.

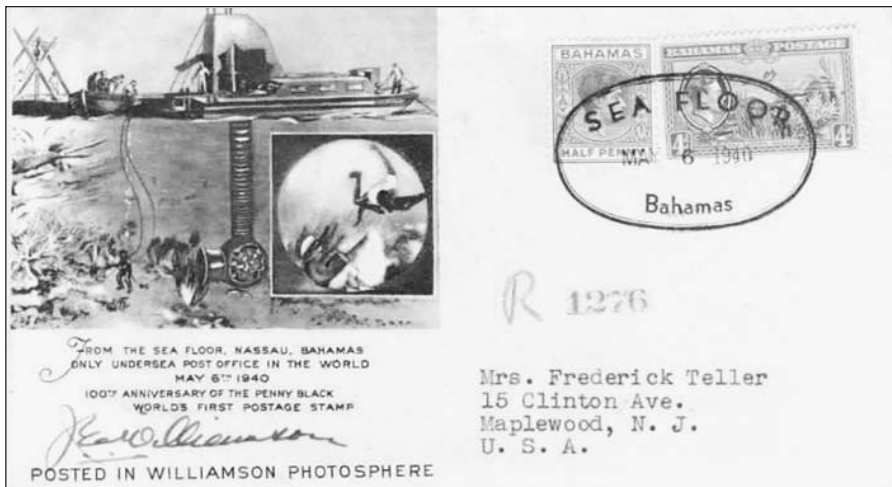


Figure 3.

gured, and the second was on the 100th anniversary of the official issue of the Penny Black on 6th May 1940. Other than these two dates the post office was available for use by any visitors permitted to enter the Photosphere and a number of covers bearing these extra dates are known. Visitors were discouraged due to the interruption it would cause to the research, but a few were permitted to visit the Photosphere on some days. As a result of these extra visits a number of covers are known with different dates other than the two official times.

The two covers illustrated in this article were posted at this sea floor post office on the official opening dates, Figs. 1 & 2. Miss Myrtle Kerr posted the First Day Cover, shown in Fig. 1, to one of her relatives, while visiting the Photosphere. This cover is illustrated with the artist's impression of visitors and what could be seen through the giant viewing window. Above this illustration is the inscription **FIRST DAY COVER** and below it are the words **Looking into a Nassau, Bahamas marine garden from the Williamson Photosphere/where the first Undersea Post Office/in history was established today.** To the right is a rubber stamp cachet reading **Posted in Williamson Photosphere/ at Bottom of Sea, Near Nassau, in the Bahamas.** The correct rate stamp of 1½d is tied to the cover by one of these special cancellations showing the date of **AUG 16 1939.** At the bottom right hand corner is a miniature drawing of the Photosphere. There are no other markings on this cover.

The other cover commemorates the Centenary of the Penny Black and was registered at this post office on May 6,

1940. As no registration labels were available at the time, a registration number was applied using a rubber stamp and a blue letter R was written in front of the number. The rate was the same, 1½d plus 3d for registration. The illustration shows the Photosphere in action together with the following inscription: **From the Sea Floor, Nassau, Bahamas/only undersea post office in the world/May 1940/100th Anniversary of the Penny Black/world's first postage stamp.** Underneath is the actual signature of J. E. Williamson, the leader of the expedition, with a rubber stamped cachet reading: **Posted in Williamson Photosphere.** The addressee is Mrs. Frederick Teller, 15 Clinton Ave., Maplewood, N.J., USA. On the back of this cover are two transit marks, one receiver, and a straight-line cachet, which reads **Bahamas Williamson Undersea Expedition.** Both the Nassau transit mark and the cachet are in black whereas the Maplewood registered and the Miami, Florida marks are in magenta (Figure 3).

At the outset this expedition was expected to last five years, but due to the escalation of the Second World War spreading across the Atlantic the project ceased in 1942. This expedition greatly advanced the scientific knowledge of the sea floor by about 10 to 20 years. The public as well as scientists enjoyed the spectacles screened at cinemas across the world showing a panoramic view of what life was like 100s of feet under the sea.

In conclusion, it should be noted that these covers are very collectable today, but not many philatelists know much about the event, and this article is meant to give an introduction into the history of the World's only Undersea Post Office. ♣

Canada REVENUES

Semi Official Air Mail

stamps & covers

Duck, Hunting & Wildlife Conservation stamps & licenses

Huge stock.
Price lists on request.
see our huge website
www.esjvandam.com

We buy & sell all of the above
established since 1970

E.S.J. van Dam Ltd

P.O. Box 300c, Bridgenorth
Ont., Canada K0L 1H0
phone toll free
1-866-EVANDAM

The Date of Issue of the Two-Cent Registered Letter Stamp

By George B. Arfken
and Horace W. Harrison

Essays for a distinctive stamp that would identify registered letters were developed by Postal Inspector John Dewe in March 1865 [1,2]. For a decade, nothing happened and then in 1875, postal officials revived Dewe's concepts and Canada's Registered Letter Stamps (RLS) were designed. We are concerned here with showing the earliest dated 2¢RLS and the earliest dated 2¢RLS cover and approximating the date of issue of the 2¢RLS.

The first Official Postal Guide issued under the authority of the Postmaster General was dated October 1875. On page xvii, it declared that:

1. On every letter and packet posted for registration, should be affixed, in addition to a stamp or stamps defining the postage, a registered letter stamp as follows:
2. On a letter addressed to any place in Canada, a registered letter stamp of the value of two cents.

Despite the announcement in the Postal Guide, it is highly unlikely that any registered letter stamps of any value were available in October 1875. Boggs (p. 469) estimated that "...special stamps for registration made their appearance on Nov. 15, 1875."

There was no post office announcement of issuing these unique stamps. So, we turn to philatelic evidence – the earliest dated stamps and covers. The earliest known dated registered letter stamp was cancelled by the circular date stamp of Craigvale, C.W. on Dec. 13, 1875. Unfortunately for this article, the date stamp does not show up well in photographs. The earliest on cover usage of a two cent RLS was dated at Newmarket, Ont. on Dec. 15, 1875. This cover, addressed to Armadale P.O., is shown in Figure 1.

The second earliest cover, dated DE 18 75, went from Upper Gasperaux, N.B. to Gagetown. This cover is shown in Figure 2.



Figure 1. The earliest dated cover with a two-cent RLS, DE 15 75. The two-cent RLS was affixed to the cover at the upper left in accordance with Department Order No. 17. Courtesy of Kimmo Salonen.



Figure 2. Posted in Upper Gasperaux, N.B. DE 18, 1875 and addressed to Gagetown.

The table lists the two cent RLS domestic covers (reported so far) for the first three months of usage.

From the earliest dates, December 13 and 15, and the pattern of two more covers in December 1875 and then five 2¢RLS covers in January 1876, we believe that Canadians started to use the 2¢RLS fairly soon after it was issued. We estimate the date of issue of the 2¢RLS to be early December 1875. 🍁

Early Two Cent RLS Domestic Covers, December 1875 – February 1876

Postmark	Origin	Destination
DE 15 75	New Market, Ont.	Armadale, P.O.
DE 18 75	Upper Gasperaux, N.B.	Gagetown
DE 31 75	Clarksburg, C.W.	Collingwood
JA 13 76	Perth	Toronto
JA 17 76	Bobcaygeon, Ont.	Toronto
JA 19 76	St. Jacobs, C.W.	Waterloo
JA 27 76	Stouffville, Ont.	Armadale
JA 31 76	Newington, C.W.	Dickinson's Landing
FE 12 76	Millbrook, Ont.	Brougham

Several of these early covers are illustrated in references 3-4.

- [1] *Canada*, Vol. 1, pp. 464-468, Boggs.
- [2] *Canada's Registry System, 1802 – 1909*, Harrison, Arfken and Lussey.
- [3] *BNAPS Exhibits No. 9, Registration Markings and the Registered Letter Stamps*, Lussey.
- [4] Robert A. Lee Auction, May 8, 1999, The Harry W. Lussey Canadian Registration Collection.

The early history of envelopes

by Dale Speirs

The following article first appeared as a two-part series, Volumes 50 and 51, in the *Calgary Philatelist*.

In the Beginning

Envelopes were invented thousands of years ago but inexpensive, mass-produced envelopes date only from Rowland Hill's postal reforms of 1840. Philatelists tend to look at the Penny Black as Hill's major accomplishment in life but, in fact, the postage stamp was only a minor part of his reforms. His greatest effect on the postal system was to prove that postal rates depend on how many times a letter is handled en route, not the distance. Hill showed that counting sheets of paper to calculate postage was inefficient, and that standardizing weight increments was the better method of charging fees.

Envelopes were invented not long after clay tablets. Such tablets were baked inside a clay wrapper and the wrapper inscribed on the surface as to its contents. It was a rather bulky method of record keeping and not exactly conducive to displaying them in standard exhibition frames at a stamp show. Paper was very expensive and difficult to come by until a few centuries ago and, combined with widespread illiteracy, was in little demand. Communications were almost entirely restricted to government officials and nobility. Paper envelopes were, therefore, rare. As long as letters were assessed on the number of sheets of paper envelopes were seldom used as the envelope constituted a sheet in its own right and bumped up the postage required.

Before the Envelope, there Was Sealing Wax

Sealing wax is known at least as far back as ancient Egypt.^[1] Although wax was the most common method of sealing a letter sheet, other alternatives were occasionally used. The Chinese used rice paste, for example.^[2] Sealing wax was usually red, but other colours are known. Black wax dates from as early as 1556 for use as mourning.^[3]

Just why sealing wax was needed was illustrated by a famous painting of a maidservant peeking into a folded letter [see Figure 1]. For this reason, anyone writing a folded letter without an envelope would first fold in the vertical edges to cover the text, then

fold it horizontally to produce the cover.^[4] The advent of mass-produced envelopes after 1840 quickly finished off the sealing wax industry, which dwindled to no more than a minor specialty. By 1872, a correspondent was lamenting: "Can anyone inform me why no good sealing wax is to be had anywhere nowadays for love or money, with the exception perhaps of what is called 'India sealing wax'? I say perhaps, because even that is not easily worked. ... I have letters of the seventeenth, eighteenth, and nineteenth centuries with bright red wax seals, the coats of arms on which have maintained to this day as sharp edges as though the impression had only just been taken, whereas now, after enclosing a letter but a short time in a portfolio or autograph book, the seal will soon get obliterated. Fifty years ago good solid sealing wax could still be procured."^[5]

This did not stop an 1890 etiquette book^[6] from snobbishly remarking: "The gummed envelope without a seal is perfectly correct, but a neat seal of red sealing-wax always gives a refined look to a letter and is a desirable adjunct thereto. Every one should have an engraved seal containing the initial letter of his surname, his monogram, or if he be so fortunate as to own one, his crest, and should use it with red sealing wax on ceremonious notes and letters. If the writer is in mourning, black sealing wax should, of course, be used, but no other colours except black and red are good form. "To get a good impression from your seal," says Mrs. Sherwood, "you may first rub it with linseed oil, then dust it with a little rough powder, and then press it quickly and firmly on the wax." Every lady's desk should have on it a wax taper, a seal, and a large stick of red or black sealing wax. The impression must not be made with anything save a proper seal. When finished the seal should show neatness and care."

By 1930, an editorial in *The Times* was reduced to grumbling that, much to the editor's regret, use of sealing wax had died out.^[7] But never entirely so because in 1916 a New York City woman died of sealing wax. Miss Mabel Elliott died of blood poisoning ten days after burning her index finger with hot sealing wax.^[8] I have not found any statistics comparing sealing wax burns to paper cuts from envelopes. One would expect that out of all the millions of paper cuts sustained since 1840 from open-



ing an envelope by running the finger under the flap, there would have been at least one septic case. But this takes us into realms of invisible postal history that are essentially not researchable.

The Mulready Disaster

In our time, we had the Ford Edsel, and New Coke, ideas that seemed good at the time but subsequently were laughed or shouted out of the marketplace. The story of the Mulready prepaid envelopes, issued at the same time as the Penny Blacks, has been well told elsewhere.^[9,10,11]

Their reception by the British public was not favourable. A May 2, 1840 editorial in *The Times* commented that "We have been favoured with a sight of one of the new stamp covers, and we must say we never beheld anything more ludicrous than the figures or allegorical device by which it is marked with its official character. ... Britannia is seated in the centre, with the lion couchant (Whigish) at her feet. Her arms are distended, scattering little flying children to some elephants on the left, and on the right to a group of gentlemen, some of whom at all events are not enclosed in envelopes, writing on their knees, evidently on account of a paucity of tables. There are, besides sundry figures who, if they were to appear in the streets of London or any of our highways, would be liable to the penal-

ties of the Vagrant Act for indecent exposure... “[12]

The Mulready envelope wasn't universally panned however. The *Mirror* commented favourably on the design.^[13] An editorial published just before the release of the envelope said: “As a work of art it reflects the highest credit on the British school”.

An 1891 commentator suggested the reason for the Mulready disaster was that: “Unfortunately, this design, however beautiful as a work of art, was altogether unsuited to the prosaic purpose for which it was intended.”^[14]

Matters were not helped by a monopoly dispute involving John Dickinson & Co., which had an exclusive patent on thread paper. Coloured threads were embedded in straight lines in the paper used to manufacture the Mulready envelopes as an anti-forgery measure. It was effective but expensive, and Dickinson lost the paper supply contract for postal stationery by 1859. De La Rue took over as the new monopoly, using ordinary paper for postal stationery.^[15]

Another difficulty that the British Post Office experienced was the preference by the general public for privately made envelopes rather than stamped envelopes. From 1846 to the middle of 1849, sales of unstamped envelopes more than doubled while the volume of stamped envelopes declined by about 20%. The reason was that unstamped envelopes were made of better paper and had gummed flaps. The Post Office finally took note of this and in 1850 introduced the new style envelopes.^[16] It was also a fact that some etiquette guides sniffed at using stamped envelopes for personal use.^[17]

By Gum, What Will They Think of Next

We take pre-gummed flaps on envelopes for granted, but it was not an obvious thing back then. As with all successes, there are several claimants to paternity (no one ever wants to take credit for failures such as the infamous Mulreadys). Henry Dobb of England was named as one father of mass-produced envelopes with gummed flaps. But then again, so was a J. Smith, who sold the Smith's Patent Adhesive Envelopes, “requiring neither wax nor wafer” circa May 1847. Just as the first postage stamps included instructions on how to use them, so it was that Smith had to instruct his customers as follows: “These Envelopes are made perfectly safe in an instant; the flap of the Envelope being prepared with a strong

cement renders it more secure than those which are fastened in the usual manner, the cement only requiring to be damped and the flap pressed down, after which it becomes dry and firm in seconds.”^[18]

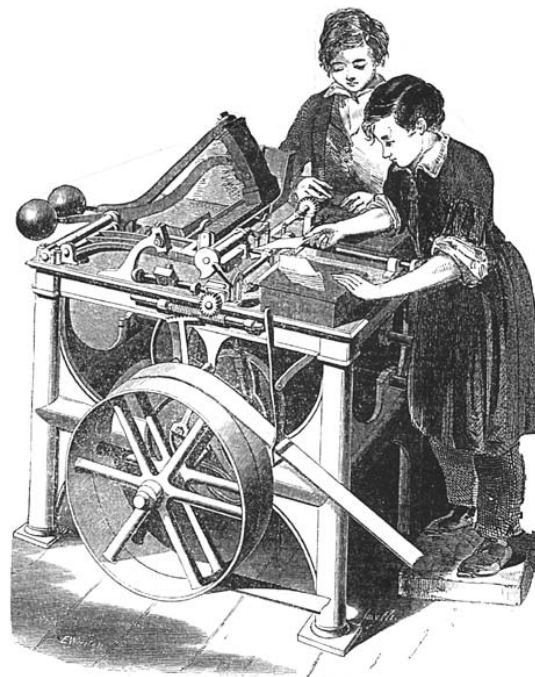
The original mass-produced envelopes had ungummed flaps, since people still used sealing wax. An intermediate step to the gummed flap was to seal the flap with gummed labels, cut off from sheets with scissors as required. The labels could be privately produced, such as Isaac Pitman's labels with shorthand mottos on them.^[19] A more obvious method was to put the postage stamp on the flap to seal the envelope, with the address obviously being written on the flap side as well.^[20] Actually, even today, that makes more sense as it would provide a better method of tamper-proofing a letter but, of course, the universal practice is to keep the flap on the reverse side.

One minor bit of envelope silliness was recorded in the British postal system in the 1930s when a Scotsman sent a letter to his young lady and sealed the flap with the stamp. Next to the stamp he wrote “Hi diddle diddle, the stamp's in the middle.” This was a mistake, as it attracted the attention of a postal official who noticed the letter was under paid and, therefore, assessed postage due with the equally cheerful, “Hi diddle day, there's twopence to pay.”^[21]

Gumming envelope flaps was an inconsistent operation at first, leading an 1871 writer to complain: “Who has not been annoyed again and again at the difficulty of opening letters with envelopes gummed up all along the top, as if they were never to be opened.” One method of overcoming this problem was for the manufacturer to run a thread inside the flap and leave one end dangling outside the envelope.^[22] The recipient then took hold of the thread end and pulled on it to neatly tear open the envelope. Although this type of envelope is still available today, its additional manufacturing cost has always kept it a specialty item. Tear strips, however, are more common on express document packages.

Mass Production of Envelopes

Envelopes were not a new invention in Rowland Hill's time. There are occasional breathless reports in the philatelic literature announcing the discovery of ‘the earliest known envelope’, such as one that detailed



an 1833 envelope.^[23] In actual fact occasional use of envelopes is as old as paper with examples known, for instance, from England in the 1500s^[24] and 1600s,^[25] and France in the late 1600s and early 1700s.^[26, 27] General use of envelopes was known in France by the early 1700s but not in England until the 1840s.^[28]

Mass production of envelopes cut the cost considerably from pre-Hill days. In 1832, common envelopes were sold at one shilling per dozen, but by 1844 the wholesale rate had dropped to half a farthing each.^[29] In 1837, envelopes sold at 2/ per hundred but this was as flat and ungummed paper not a finished envelope. After preparing the enclosure, the corners were brought together under the seal.^[30] In the transitional stage between handmade and mass production, it was common to have cardboard templates for individuals to cut and fold their own envelopes.^[31]

There was no one single manufacturer or person who can be considered as the father of the envelope. Prior to 1840, envelopes were carried by stationers as a specialty item. When the demand increased after 1840, many people simultaneously went into the business of manufacturing them.^[32] All manner of patented envelopes were created, and this would be a full-line philatelic collection in its own right.^[33] By 1851, machines were in use that could cut 480 envelopes at one stroke, then automatically fold and gum them. De La Rue, better known to philatelists as a stamp printer, could manufacture 396,000 envelopes in a day.^[34]

You Have Nothing to Lose but Your Wax

As with any new invention, there was always a voluble faction who felt that nothing would come of the new-fangled idea. An indignant letter to *The Times* in 1842 said that: "... the envelopes are pretty playthings and convenient enough for invitation circulars, but they should never be used by the merchant or lawyer."^[35] Long before Rowland Hill, the author Charles Lamb was fulminating against the use of envelopes. In August 1825, he wrote: "You'll know who this letter comes from by opening slap dash upon the text, as in the good old times. I never could come into the custom of envelopes. 'Tis a modern foppery."^[36] In March 1826, he was still ranting that: "I never enclosed one bit of paper in another, nor understood the rationale of it."^[37]

The acceptance of envelopes with gummed flaps was quick among the general public. As early as 1845, an American etiquette book advised that "A lady's letter should always be enclosed in an envelope, unless it is going some distance, and the postage would be increased by the extra sheet. ... All notes should be enclosed in envelopes. ... Wafers are of course never used; a large seal to a lady's letter is in bad taste."^[38]

Envelope Oddities

In our time, the Internet has raised questions on points of law such as copyright infringement and cross-border taxation which will take a number of years to settle in the courts and legislatures. Rowland Hill's postal reforms stirred up many such issues such as libels on postcards and illegible postmarks allowing murderers to go free (the infamous Madeline Smith of Glasgow). The advent of mass-production envelopes caused at least one concern in evidence law in 1842: "... the postage stamp attached to an envelope in which a letter is merely enclosed will not qualify that letter to be read as evidence in a court of law, the postage stamp being required to be attached to the letter itself."^[39] This matter has long since resolved itself in courts, but in the early years of Hill's reforms it did not appear as simple as might be.

During the 1800s, it was the custom of American railroads to fire employees by sending them a blue envelope containing a letter of dismissal and their final paycheck.^[40] No pink slips in those days. What happened on one railroad was that the company president began using blue envelopes for ordinary correspondence, sowing unnecessary alarm among his minions.

One conductor who received a blue envelope with a routine letter had to go home and change his uniform!

Paper, at one time scarce and valuable, is now so cheap that we have to be reminded to recycle it. In modern times, before the growth of the recycling industry in the late 1970s, wars provided a rare impetus to save paper. Envelopes in particular are obvious targets to be reused. Perhaps a record was the envelope that was re-sent 59 times between two boys in England during World War II.^[41] Each time they pasted a new address label over the old one. It failed on the 59th round when the weight of the labels pushed the envelope into the next increment of postage, and postage due was assessed. ♣

References

1. W. Townsend, Sealing Wax, *Chamber's Journal* (1928), 18 pp.15-16.
2. Anonymous, Relics of the past: Ancient Chinese seals found in Ireland, *Illustrated London News* (1860), 37 p. 632.
3. Anonymous, (as W.H.S.) Mourning or Blackedged Writing Paper, *Note & Queries*, Series 4, 7 (1871), pp. 209-210.
4. Diane DeBlois, Folding the stampless cover. P.S.: *A Quarterly Journal of Postal History*, 11(1) (1989), pp. 22-32.
5. Anonymous, (as P.A.L.) Sealing Wax., *Note&Queries* Series 4, 9 (1872), p. 347.
6. A.W. Eaton, *Letter Writing: Its Ethics and Etiquette*. Published by Frederick A. Stokes Co., New York. (1890).
7. Anonymous, Seals and Sealing wax, *The Times* (London, 1930), p. 15.
8. Anonymous, Sealing Wax Kills a Woman, *New York Times*, (1916), p. 20.
9. M.K. Miller, It's the Mulready's Anniversary, Too. *Philatelic Literature Review*, 39 (1990), pp. 119-127.
10. E.B. Evans, *A Description of the Mulready Envelope and of Various Imitations and Caricatures of Its Designs*. Published by Stanley Gibbons Ltd., London, England., (1891), 240 pages.
11. Alan Huggins, The Mulready: Marketing Fiasco, *Philatelic Delight. Stamp World*, 1(5), (1987) pp. 10-13.
12. Anonymous, [untitled editorial] *The Times* (London), (1840), p. 5.
13. Anonymous, The Post Office Letter Stamp. *Mirror*, 35 (1840), p.278.
14. E.B. Evans, *A Description of the Mulready Envelope and of Various Imitations and Caricatures of Its Designs..*
15. Joan Evans, The Endless Web: John Dickinson & Co. Ltd. 1804 – 1954. Published by Greenwood Press, Westport, Connecticut. (1955), 1978 reprint edition, pp. 70-86.

16. H. Dagnall, Philatelic Backdrop: Postal stationery. *Gibbons Stamp Monthly* 31(10) (2001), pp.42-43.
17. E.W. Eaton, Letter writing.
18. A. Abrahams, Bag Envelopes. *Note & Queries*, Series 11, 6, (1912), pp. 52-53.
19. Anonymous (as A.S.) Bag Envelopes. *Note&Queries*, Series 11, 6 (1912), p. 53
20. Anonymous (as R.B.P.) Bag Envelopes. *Note&Queries*, Series 11, 6 (1912), p.274.
21. Anonymous, U.S.A. Economic Recovery, *The Times* (London), (1936), p. 8.
22. Anonymous, (as F.C.H.) Mourning, or Black-Edged Writing Paper. *Note & Queries* Series 4, 7, (1871), p.307.
23. H.W. Lussey, New Frontiers in the Past, *BNA Topics*, 8, (1951), pp. 109-111.
24. Anonymous, Curious Envelope, *The Times* (London), (1841-10-01), p. 6.
25. C. Hopper, Envelopes First Introduced, *Note&Queries*, Series 2, 4, (1857), p. 170.
26. Anonymous, Origin of Envelopes, *Note&Queries*, Series 4, 2, (1868), p. 238.
27. D. Lawrence, The First Envelopes, *Stamp Collecting* 130, (1978-08-10), p. 2409.
28. Anonymous, Envelope (Engl.): Enveloppe (Fr.) *Note&Queries* Series 2, 4, (1857), p. 195.
29. Anonymous, Postage Labels and Envelopes, *The Times* (London), (1844-09-14) p. 5.
30. Joan Evans, The endless web.
31. Anonymous, Envelopes, *Note & Queries*, Series 5, 12, (1879), p. 26.
32. W. Willey, Origin of envelopes, *Note & Queries*, Series 4, (1868), pp. 56-57.
33. Diane DeBlois, Three Patent Envelopes, P.S.: *A Quarterly Journal of Postal History*, 19, (1983), pp.32-38.
34. Anonymous, De La Rue's Envelope Machine, *Illustrated London News*, 18, (1851), pp.603-604.
35. Anonymous, (as "A London Merchant") [letter to the Editor] *The Times* (London), (1842-01-21), p. 6.
36. W.H. Peet, Envelopes, *Note&Queries*, Series 9, 12, (1903), p. 491.
37. W. Willey, Origin of Envelopes.
38. Anonymous, (as "A Lady of New York") Etiquette for Ladies, Published by G.B. Zieber & Co., Philadelphia. (1845), pp. 40-41.
39. Anonymous, (as "Legality") To the Editor of *The Times*, *The Times* (London), (1842-11-18), p. 3.
40. Anonymous, Blue Envelopes on Railroads, *New York Times*, (1896-04-19), p. 2.
- 41] Anonymous, [untitled] *The Times* (London), (1944-09-21), p. 7.

Blueberries and Mail by Sea

from Yarmouth to Boston in the Mid-19th Century

By Captain Thomas Killam

My name is Captain Thomas Killam. (Figure 1) The title Captain is honorary because I really did not have a seafaring career. However, I was familiar with ships as many were built in my father's shipyard.

I was born in 1802, the third son of John Killam II and Sarah Allen. In 1823, I married Sophia Corning. From that union was born a son in 1824 whom we named George. Sadly, Sophia passed away in 1839. That same year I founded the firm of Thomas Killam and I named the first ship I built Sophia in memory of my deceased wife. Shortly thereafter, I married Elizabeth Gale Dudman who bore me eight children.



Figure 1. Capt. Thomas Killam (1802-1868), a member of the Killam shipbuilding dynasty.

and my eldest son George became my associates. (Figure 3) That partnership was dissolved in 1862 when my sons Frank and John H. joined the firm.

Frank was elected to the House of Commons to fill the vacancy as a result of my death on my way home from Parliament, on December 15, 1868. I had only been in the House of Commons since Confederation but I had served twenty years in the Nova Scotia Legislature before that. Poor Frank lost his left arm in 1867 when a cannon prematurely discharged during the celebration of the Nova Scotia election victory.

Well, you say, what has all this got to do with postage stamps? I am getting to that, but before I get there let me tell you about the blueberries.

With my brother-in-law and other well-known Yarmouth residents, Thomas Allen, Stanley Brown, John Lovitt (Figure 4) and W. H. Townsend, I owned the *Eastern State* which was built in Philadelphia in 1851 for the Yarmouth Steam Navigation Company. She was the first steamer to run between Yarmouth and Boston beginning in 1855 with weekly runs starting in 1857. One of her most famous skippers was Amos Crosby of *Marco Polo* fame. (Figures 5 and 6) She was replaced, in succession, by the *Relief* in 1862, the *Scotia* around 1864 and, temporarily, by the *Palmyra* and the *Prometheus* in 1866. By mid-summer 1866, the *Linda* became her permanent replacement. But more about her later.

The new and speedy modes of sea transport that my partners and I built were instrumental in the development of the economy of Yarmouth County. We had gotten rid of the wooden ships as steam travel became faster and allowed our vessels to carry more cargo. In addition, because they were faster, the cargo could be diversified and perishables added. Our Yarmouth Steam Navigation Company was able to provide an outlet, first to Boston and then later to New York, for the Yarmouth blueberry producers.

But blueberries weren't the only cargo we carried. We also carried the mail. Now we are getting to something you are more interested in, dear readers. So here is where we come back to the good old *Linda*. She was a 500-ton steamer com-



Figure 2. The ship *Thomas Killam* named after himself.

By the time I died, I had owned or partly owned 57 ships with one named after me. (Figure 2) My company's name underwent several name changes depending on whom I took in as partners. In 1849, the company was renamed Thomas Killam and Company when my brother-in-law, William K. Dudman



Figure 3. George Killam House, 109 Brunswick Street, Yarmouth.



Figure 4. John Lovitt House, 10 Parade Street, Yarmouth.



Figure 5. A painting of the *Marco Polo*, commissioned by Capt. Amos Crosby.

manded by Captain Oliver Hale when she was put on the St. John-Boston run with a stopover in Yarmouth. In addition to mail service to the U.S. from Yarmouth, the St. John to Yarmouth leg provided my hometown with an important mail link to the rest of Canada. My partners and I received the "ship letter" rate of two cents for each letter we carried. This arrangement lasted until April 20, 1871 when the port-of-call was changed from Boston to Portland, Maine. From that time on my sons, now owners of the company, received half the postage collected by the sending country, the same fee as the big players such as Inman and Cunard.



Figure 6. A 1999 Canadian stamp (Unitrade 1779) issued to commemorate the ship and its record setting crossings to Australia. The stamp and a matching souvenir sheet (Unitrade 1779a) were issued at AUSTRALIA '99, the World Philatelic Exhibition held in Melbourne in March 1999.



Figure 7. A letter carried aboard the *Linda* from St. John to Boston in July 1869.

I illustrate one of the envelopes carried by the *Linda* on a weekly trip to Boston in July 1869. (Figure 7) The letter it contained was written at Beaver River, Nova Scotia on or about July 3. It could have been written by one of my first wife's relatives as four of the six land petitioners in 1814 were all named Corning and the envelope is addressed to a Joseph Corning at Danvers Point, Massachusetts. But how could I know this as I had been dead for



Figure 8. July 3, 1869 Beaver River, Nova Scotia, postmark where the letter in Figure 7 was mailed.

six months when this letter was mailed. Although Beaver River is closer to Yarmouth than it is to Digby, Nova Scotia, the postmaster was well aware that the letter had to be sent to St. John. In the middle part of the 19th century, mail despatches were quicker if they were sent by ship as opposed to overland. So it was with this letter. It was posted on Saturday, July 3 (Figure 8) and carried either by land or by ship to Weymouth as shown on the backstamp and forwarded to Digby on Monday, July 5 as shown by another backstamp. A few hours layover and it was on its way on another boat for the Bay of Fundy crossing to St. John, as shown on a third backstamp, where it was received late that same day. It was put into a closed bag for the trip to Boston aboard the *Linda*.

On August 27, 1871, the *Linda* sank off High Head in Yarmouth County. (Figure 9) She was refloated the next year and repaired in my sons' shipyard. They changed her name to *Dominion* and she resumed trips to Boston in April 1873. She carried passengers and goods, blueberries in season, but never again the mail on a regular basis. An indication of her importance to the blueberry industry is shown when in 1885 the Yarmouth markets were flooded with blueberries and the price plummeted. You might well ask, why? The reason was because the *Dominion* was laid up for repairs and there was no other way of shipping the berries to the Boston and New York markets.

I hope you liked my little story of the envelope that was carried on the *Linda* and that you didn't mind all my extraneous family history. When you are next in Yarmouth, remember me. Many of the town's landmarks are named after my family. ♣



Figure 9. A picture of High Head, Nova Scotia. The *Linda* sank off its coast on August 27, 1871.

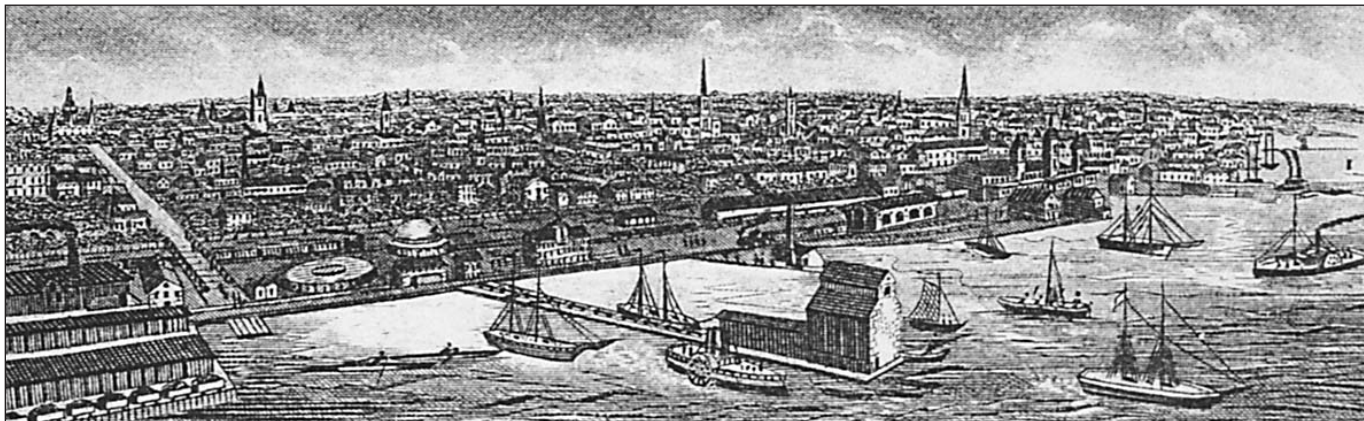


Figure 2. An engraving of the City of Toronto that looked as if someone landing in a seaplane along the shore had crafted it.

The Surprises of Philately

By Kimber A. Wald

One of the nice things about our great hobby is the unanticipated surprise. For example, you go to a stamp show, examine dealers' material relating to your collecting interests, find something that looks run-of-the-mill but because you need it, you purchase it. Later, you discover that it will become a philatelic memory to be forever treasured.

Canadian philately offers many wonderful opportunities to explore. Recently, I have been working on the formation of a used collection to 1990 and also a specialized study of Special Deliveries. Lurking in the background has been an interest in Ontario postal history and Toronto in particular. Toronto is my favorite "north of the border" spot for visiting.

At an American national show last year I purchased a modest looking 1885 Toronto duplex cover (Figure 1). It is a little tattered at the left side and the cancel is slightly off at the right, but as I needed it, \$15.00 changed hands for this "space filler."

Imagine my surprise when I got home and found a letter inside addressed to the writer's friend, Ella, back in Shelbyville, Indiana.

The letter was carefully pulled out, unfolded, and there, at the top, was an engraving of the City of Toronto that looked as if someone landing in a seaplane along the shore had crafted it (Figure 2).

I scanned the drawing with a magnifying glass for some landmarks I know, such as the Old City Hall and the tower of the 150 year-old-church on Bond Street were I like to worship when I'm in town.

Just about as interesting as this "graphic tour" was the author's personal description of sailing on the lake by steamboat and visits to several other places in Ontario besides Toronto.

Alice was the kind of person who would make any travel agent delighted they did not select some other career.

Thanks to this letter, Alice leaps to life after 117 years as we read her comments written in Toronto on Friday, August 28, 1885:

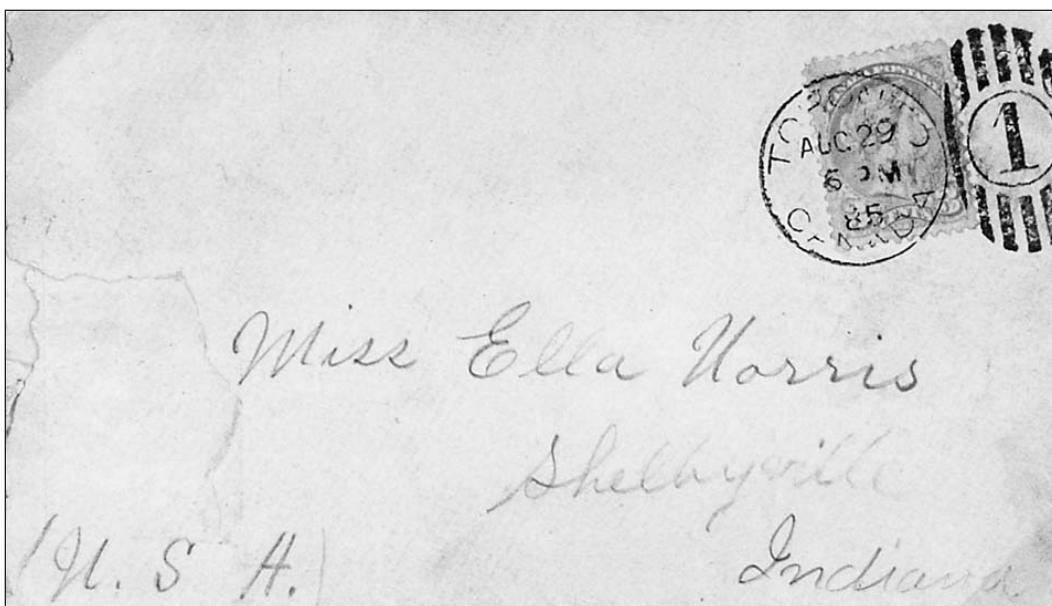


Figure 1. This cover was mailed August 29, 1885 from Toronto to Shelbyville, Indiana. It is backstamped in Shelbyville August 31. It is franked with the three cent surface letter rate for a half ounce to the United States.

"Dear Ella:

"I received your letter a long, long time ago and answered it once but did not send it. I am now visiting in Canada. I came across the Lake from Port de Lucy* to Toronto today and had a lovely ride on the steamboat (The Empress).

"Toronto is the 'loveliest' city I ever saw. The exposition grounds are magnificent. I also saw the Crystal Palace and the 'Castle' where the Prince of Wales and the Princess Louise stay when here. Of course, it is very grand. I have been here visiting for some time among our relatives. I came with my aunt. Her health is very poor and she could not come alone. I was at Niagara Falls too and took several nice, long walks all by myself over the city. We were also in Buffalo and Cleveland, Ohio.

"I was at the skating rink last night. Had a nice fellow. He is going to take us for a drive all over Niagara and the adjoining places of interest. He lives in St. Catherine's, Canada, where we have been most of the time. Riding on a steamboat is lovely.

"We expect to return to Indianapolis some time next week. I am invited to visit a friend in Louisville, Kentucky, during the exposition there and a conductor who boards at our house runs from Indianapolis to Louisville and I think he will give me a pass. Carrie is going too. If I take in Louisville I think I have gone enough for one summer and will not hardly get to go to Shelbyville although I promised faithfully that I would. Do you ever come to Indianapolis? I would be pleased to see you any time you may feel disposed to come.

"No indeed we are not thinking of going to Kansas. We bought a farm near Frankfort, Indiana, and also a house and lab in Frankfort and it may be possible that we will move there sometime but not soon, I think.

"How is Ina Thomas? Are you and her as intimate as you once were? Well, I suppose by the time you answer I will be at home as we expect to return next week. Sunday I expect a grand time. Saturday I am going on an excursion. I have been to one party since I came. I am 13 miles north of Toronto tonight. Will return to Toronto tomorrow and go on an excursion on the Lake tomorrow night.

"Goodbye,

"Alice"

The next time you are looking through some covers in a dealer's stock, check them for chubbiness as well as postal markings. You may be quite surprised and pleased with what has been waiting inside for you over the decades!

Bibliography

Hughes, J. Paul, Proof Strikes of Canada, Vol. VI, Duplex Proof Strikes of Ontario. Robert A. Lee Philatelist, Ltd., Kelowna, BC, 1990.

Lee, Robert A., Catalogue of Canadian Duplex Cancellations, Second Edition. Robert A. Lee Philatelist, Ltd., Kelowna, BC, 1993.

* A misspelling for Port Dalhousie located just west of St-Catharines.

• ALBUMS • BINDERS • STOCK BOOKS • OPTIMA • FDC'S

Lighthouse[®]
Publications (Canada) Ltd.
255 Duke, Montréal, Québec H3C 2M2
Tel.: (514) 954-3617 Fax: (514) 954-3618

**The specialists in
philatelic supplies**

**When nothing but the
best will do... Call**

**Outside Montreal:
1-800-363-7082**

20% discount for Royal members

Free product guide available.

FDC'S • OPTIMA • FDC'S • BINDERS • STOCK BOOKS •

We are recognized market-makers in...
**CANADIAN SEMI-OFFICIAL
AIRMAILS**



BUYING & SELLING
Stamps, Panes, Tete-Beche
Pairs, Errors, Essays, Proofs,
Booklets, Colour Varieties,
Covers (incl. First Flights,
Fancy Cachets, Round Trips,
Pilot-Signed, Cross-Border, Periodicals, Mixed
Franking, etc.) and all "Exotica" in this area.

**SHIP WITH CONFIDENCE - TOP PRICES PAID.
WANT LISTS FILLED.**

**MARK-LANE
STAMPS**

P.O. Box 626 • West Haverstraw, NY 10993
Tel/Fax: (845) 362-5330 • E-mail:rws45@aol.com





**What firm links
Canada and Europe
as if they were one?**

Stephen J. Osborne Ltd.

is your Canadian-European Stamp Connection

**Call 1-800-WE-DO-BUY
(1-800-933-6289)**



**The Osborne Buying Team
needs your stamps
and postal history**



For more information:
P.O. Box 378
Jeffersonville, VT 05464, USA
Phone: 800-933-6289
Fax: 802-644-6512

Ridgeways, Georges Lane
Storrington, West Sussex
RH20 3JH, England
Phone: 011-44-1273-777674



Canada's 1937 George VI Issue

By J.J. Edward

When King Edward VIII abdicated on December 11, 1936, Canada's postal authorities were thrown into a state of bewilderment followed by frantic activity to produce King George VI postage stamps. The public expressed its concerns and inquired about the Post Office Department's intentions and plans for the needed new stamps. It was a period when the King George V stamps of 1935 were current, new designs for King Edward VIII stamps were being printed when suddenly a new king, George VI (1895 – 1962) was thrust on the scene.

Post Office files at the Postal Archives in Ottawa shed some light on activities during that hectic period. James Montagnes of the Canadian Central Press, Toronto, Ontario (on December 12, 1936) wrote to H.E. Atwater, Financial Superintendent, Philatelic Section, Post Office Department, asking the following:

- a) Would George V stamps be withdrawn by the year end?
- b) Will any King Edward VIII stamps be printed?
- c) Are the King Edward VIII printing plates to be retained or will they be destroyed?
- d) Will the 2c Duke of York stamps issued for the 25th anniversary of King George V's accession to the throne be reprinted?
- e) When will the George VI stamps appear?
- f) Will there be consultation among the Dominions concerning the Edward VIII stamps that are ready for distribution?

On December 14, 1936 Mr. Atwater noted that the Postmaster General, the Honourable John Campbell Elliot, requested the Canadian High Commissioner in London, England, to obtain two authorized photos of King George VI in profile, one facing right and one facing left for use on Canada's new stamps. On the same date the Associated Press in England reported that the King Edward VIII stamps were selling in England in excess of 20 million a day and that these stamps would continue to be printed until King George VI approved his official portrait.

The following day, Atwater sent a memorandum to the Postmaster General in which he recommended that due to insufficient time, a George VI coronation stamp for May 12, 1937 be issued as such but rather incorporate the design of the new, regular 3-cent George VI stamp. He pointed out that since it was determined that no King Edward VIII stamps, then in preparation, would be issued, it was necessary to issue a complete series of "King's Head" stamps. If the suggestion met with the P.M.G.'s approval, Atwater advised that the new designs for the King's Head issue and the Coronation stamp would be submitted for approval as soon as the Banknote Company had them ready.



1937 Coronation stamp
King George VI from Bertram Park portrait and Queen Elizabeth from Peter North portrait.

One week after Montagnes wrote to Atwater, the latter provided the following details:

- a) George V stamps would only be withdrawn when the new issue replaced them.
- b) There was no knowledge as to whether there will be any King Edward VIII stamps.
- c) All plates and dies of Canadian stamps no longer issued are destroyed.
- d) The Post Office Department never reprints an obsolete stamp.
- e) He has no idea when a King George VI stamp will appear.
- f) The Postmaster General has sole responsibility for disposal of Canadian postage stamps. As to King Edward VIII stamps, see (b) above —

(It is interesting to note the ambiguity that although some King Edward VIII stamps were already printed and the public knew about the printing, the Department denied knowing whether there would be any.)

Noting the urgency that existed, the Canadian Banknote Company advised Atwater on December 18 that the schedule for the new King George VI stamps would be as follows:

- Proofs of the 3c would be ready 3 weeks after the model was approved.
- Proofs of the 1c and 2c would be ready 4 weeks after the model was approved.
- Delivery of the 3c stamps would be 10 days after the approval of the proofs at the rate of 3 million per day
- Delivery of the 1c stamp would be 15 days after approval of the proofs at the same rate.
- Delivery of the 2c stamp, 20 days after approval of the proofs at the same rate.

The Canadian Banknote Company noted that it expected reimbursement for overtime since the Post Office Department requested urgency. They quoted on the basis of working overtime 10 cents per thousand for printing 35 million 3-cent stamps and 11-cent per thousand for printing 15 million stamps of each 1-cent and 2-cent values. (The regular price was 8c and 8.5c respectively.)

On the day before Christmas 1936, the Canadian Banknote Company received a request from the Post Office Department to prepare an ornamental frame so that the authorized portrait of the King could be inserted as soon as it was received. Atwater advised the Postmaster General that an authorized portrait of King George VI was expected by December 28. He also stated that the model would be prepared by the Banknote Company in three or four days and that the earliest date for release of the stamps would not be earlier than March 1, 1937.

At year's end (December 30), Atwater delivered a letter to Dr. O.D. Skelton, Undersecretary of State for External Affairs, suggesting that in the event that an official portrait or photo of King George VI was not available, that perhaps the 2-cent Silver Jubilee stamp portrait of the Duke of York could be used. He enquired if it would be practical to wire London for permission. The following telegram from the Secretary of State was sent to The Honourable Vincent Massey, High Commissioner for Canada in Great Britain, London.

Telegram #376

Ottawa, 30th December, 1936

Our telegram #363 December 12.

If profile portraits, or other later and approved portraits are not immediately available, Postmaster General enquires whether permission could be given for use of portrait of His Majesty as Duke of York which was used on special Silver Jubilee 2c stamp issue. A copy of this stamp is doubtless available in London. It is evidently based on the Bertram Park portrait for which permission has been given for use on Bank of Canada issue. See your telegram No. 449 December 28

Secretary of State etc.....

The Secretary of State for External Affairs received the following reply by telegram from the High Commissioner for Canada in Great Britain.

Code No. 2

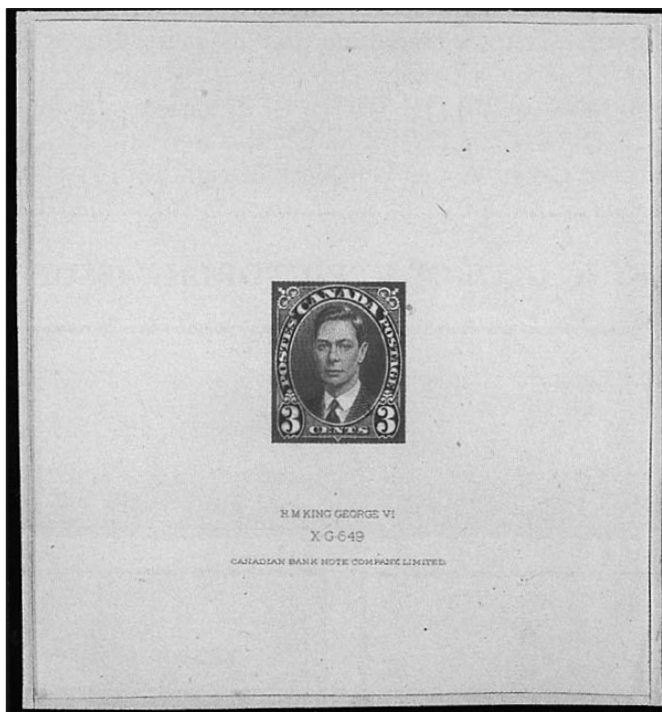
London, 5th January, 1937

No. 2. Your telegram of the 12th of December No. 363 and your telegram of the 30th December No. 376. Have now received from Royal Mint two profile photographs of His Majesty. These are official photographs taken strictly for the Mint and postage stamp purposes only. I am sending these per "Aquitania" tonight Deputy Master of the Mint informs me that Mr. Paget, the artist who did the King's Head of which a plaster model was sent to the Canadian Postmaster General, November 13, is at work upon head of the new King. He states that this is as good and perhaps better than his effigy of former King and he enquires whether the Postmaster General might find this more useful to him than photograph and if this is the case he would be pleased to supply a model which would probably be ready by middle of February.

Massey

Mr. N.H. MacDonald, secretary to the Postmaster General received a memorandum from Mr. Atwater advising that if the same border authorized for the King Edward VIII stamps could be used, one week would be saved in production time. The Postmaster General considered the idea and on January 11, 1937 requested to see the King Edward VIII proofs.

Finally on January 16 the Deputy Master of the Mint in Ottawa received three official portraits. One showed His Majesty the King facing left, one facing right, and one a full face. They had been sent via the Aquitania that sailed January 5 and docked in New York on January 12. It was immediately noted that the King was in civilian dress, a departure from precedent.



King George VI 1937 three-cent Carmine Large Die Proof on india paper sunk on card.

Mr. P.J. Wood, President of the Canadian Bank Note Company acknowledged on the same day, January 29, that he received the photograph by Bertram Park of His Majesty King George VI to be used for the new stamps. In the same memorandum to Atwater, Wood acknowledged receipt of a model containing three subjects prepared for the King Edward VIII stamps approved by the Postmaster General on September 12, 1936 and also three die proofs of the King Edward VIII stamp in 2c denomination in colours red, green, and brown, approved on November 27, 1936. Promptly on the following day, January 30, the model showing the Bertram Park photograph was submitted by the Canadian Banknote Company to the Post Office Department for approval. Also included was a model showing His Majesty as the Duke of York as used on the 1935, 2-cent Jubilee stamp.

The model using the Park photograph was approved by the Department on January 23 when it was returned to the Canadian Banknote Company. A few days later, the Duke of York model was rejected. It, along with five other models, were sent to the banknote company who acknowledged receipt and stated that all models would be destroyed. On February 5, photos for the Coro-

CANADA • BNA

Choice Classics to Modern Varieties



Ghost Town

723Ab 50c "Ghost Town" error completely missing the brown engraved inscriptions, power lines, and detail on buildings. An outstanding error. VF NH CS\$ 3,000.00
Reg. C\$2,495.00 / US\$1,695.00



\$1 Fundy

726b \$1 Fundy missing black inscriptions. A nicely centred example of this rare error with a normal to compare. VF NH CS\$ 1,000.00
Reg. C\$995.00 / US\$675.00



Triple Error

878 var 17c Antique Mandora Missing colour (Gold inscriptions) and tagging and printed on the gum side. A most amazing triple error. VF NH Darnell\$ 2,000.00
Reg. C\$1,950.00 / US\$ 1,325.00

* Special *

Buy any 2 missing colours and take 10% off; buy any 3 and take 20% off.
Buy all four at:
C\$4,695.00 / US\$3,190.00
(save 30%)
[blocks of 4 also available]



Winter Leaf

924c 32c Maple Leaf in Winter missing colour error. Beige background and tagging missing. Abitibi paper. Issued in 1983 but first reported Aug 97. About 150 known. VF NH CS\$ 1,350.00
Reg. C\$1,295.00 / US\$ 880.00

Canadian & BNA Philatelic Literature



Canada's Three Cent Small Queens 1870-1897

SASKATOON STAMP CENTRE

P.O. Box 1870, Saskatoon, SK S7K 3S2 CANADA
Tel: (306) 931-6633 Fax: (306) 975-3728
E-mail: ssc@saskatoonstamp.com
Web Site: www.saskatoonstamp.com

Our 128 page literature list,
free on request

Canada/BNA Literature

We are the leading source for Canadian and BNA stamps and literature.

- we have the best stock of Canadian philatelic literature anywhere
- largest Canadian booklist (128 pages) in the world, containing cover illustrations and independent book reviews
- free booklist on request or visit our web site for a complete listing of books (including new titles received since the booklist was published)

www.saskatoonstamp.com

Centennial Definitive Series 1967-1973



Centennial Definitives
7th volume in a series
PPD: C\$54.95

Internationally Recognized as a Leading Buyer of Canadian Errors and Varieties

SASKATOON STAMP CENTRE

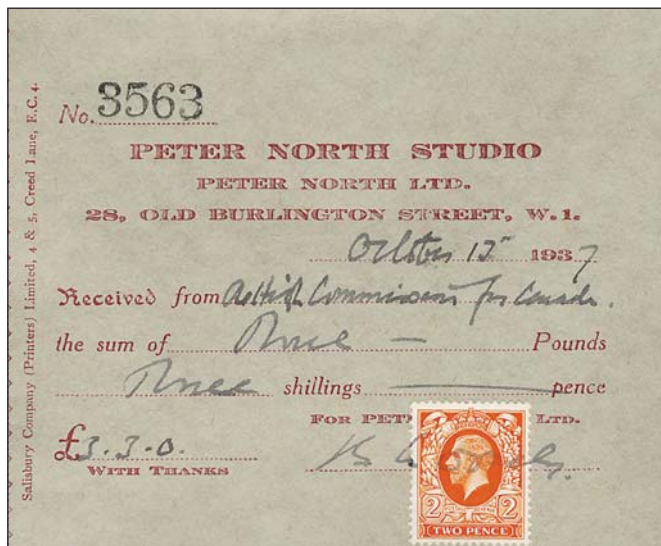
P.O. Box 1870, Saskatoon, SK S7K 3S2 CANADA
Call TOLL FREE 1-800-205-8814 in North America
Ph: (306) 931-6633 Fax: (306) 975-3728



E-mail: ssc@saskatoonstamp.com
Web site: www.saskatoonstamp.com



nation stamps were sent by General George P. Vanier of the High Commissioner's Office, London. There were two photos of the King, two of Queen Elizabeth, and one of Princess Elizabeth. In mid-February, the Banknote Company reminded the Post Office Department that it should arrange for release of copyright of photograph #05260-C of His Majesty King George VI by Bertram Park, 43 Dover St., London W.1, England. The Department asked External Affairs to secure copyright release. The proofs of the King George VI, 3-cent stamp was approved by the Post Office department on February 22, 1937.



Receipt for payment of three guineas to Peter North Ltd., London for use of Bertram Park portrait used for King George VI definitives (1937).

The Honourable Vincent Massy, Canadian High Commissioner in London, England, contacted the postal authorities advising them that there would be no charge for the photograph except 3 guineas for the use of the portrait. (A guinea was a British gold coin used in stating professional fees for photographs, pictures etc.) General George P. Vanier on behalf on the High Commissioner's Office, London, wrote on February 25 to External Affairs confirming an earlier telegram that Bertram Park was pleased that the photo would be used for stamp purposes. Peter North Ltd. stated that the Park photo was one of those supplied to the Royal Mint and they therefore asked for their usual fee of £3-3-0 (3 guineas), which they charge for copies.

The Post Office Department acknowledge receipt of the 1c, 2c, 4c, 5c, and 8c, King George VI proofs from the Canadian Banknote Company on March 5, 1937. The Honourable J.C. Elliot, Postmaster General approved them on the same date. Also on March 5, the model for the 3-cent Coronation stamp was delivered to Mr. P.T. Coolican, Assistant Deputy Postmaster General. On March 8, 1937, Postmaster General Elliot approved an imperforate sheet of 100 of the 3-cent denomination for colour.

Under the date of March 15, 1937 the following press release was approved by the Postmaster General.



His Majesty King George VI imperforate pair.



1937 King George VI Definitives: 1c, 2c, and 3c issued April 1, 1937; 4c, 5c, and 8c issued May 10, 1937.

Press Item

"Hon. J.C. Elliot, Postmaster General, announces that on the 1st of April the Post Office Department will issue three postage stamps bearing the portrait of His Majesty King George VI. The values will be one cent green, two cents brown, and three cents red. Other denominations will appear at a later date. This is not a Coronation commemorative issue, but a regular "King's Head" series, showing His Majesty in mufti. It is expected that the stamps will be on sale at all post offices throughout Canada on April 1st. Definite announcement as to the remaining values of this King's Head series, and the special Coronation stamps will be made shortly."

Before the press release went out, Atwater noted in a memorandum to Mr. A. Stanley Deaville, Officer in Charge, Philatelic Division, that the Ottawa Morning Citizen had already published the announcement in its early edition. In the same memo he confirmed that he had informed Deaville by telephone that the Postmaster General had given approval to the release. The following day Deaville informed Atwater that he had handed a copy of the release to Mr. Carnegie of the Canadian Press with the understanding that it would appear in the evening papers.

Atwater, in a letter dated March 16th to Mr. W. Mactavish, Toronto, Secretary of the Canadian Philatelic Society, confirmed that the 1c, 2c, and 3c values would be available at all post offices until April 1st. (The 4c, 5c, and 8c definitives did not go on sale until May 10, 1937, the same day as the 3c Coronation stamp.)

On May 6, 1937 the Post Office Department returned the Bertram Park photos of His Majesty King George VI facing left and right to Peter North Studio Ltd., London. The Department retained the full-face photo used for the King George VI, 1937 definitive issues. Also retained was the photo of King George VI #4876-5, by Captain Peter North, and the photo of Queen Elizabeth #01953G by Bertram Park, both of which were used for the 1937 Coronation stamp.

As with most new stamps issued by the Post Office Department, many accolades and criticisms were received for the 1937 King George VI definitives. More complaints than usual were received about this series principally because many people did not like to see the King in civilian clothes. Among the letters received was one from the I.O.D.E., (Independent Order Daughters of the Empire), who wrote that the King should have been shown in military uniform. ♣

Jamaican Jottings

By "Busha"

If you check with your catalogue (no matter whether it be Gibbons or Scott), you will note there is no 6d value in the 1919-1921 Pictorial Set recess printed by De La Rue on Multiple Crown CA paper. Both catalogues add a footnote at the end of the set's listing to the effect that a 6d value, depicting the reading of the Declaration of Freedom from Slavery in 1838, was prepared and sent out to the colony in April of 1921, but was never issued. The stamp had been distributed to all post offices preparatory to its release, but, in the event, it was recalled and the stocks destroyed.



Imperforate printer's sample in blue-green and violet on unwatermarked paper, horizontally overprinted "SPECIMEN." (From the Swarbrick Collection of Jamaica, auctioned by Cavendish Philatelic Auctions, Derby, in September 1995.)

This set was reprinted on Multiple Script CA paper and released over the years of 1921 to 1929. The previously missing 6d value was now replaced with one depicting a lovely view of Port Royal Harbour in 1853, from a photograph taken by Adolphe Duperly, a famous photographer of his day.

But now, harping back to the recalled 6d value of the original set... (inciden-



tally: the view on that stamp was also taken from a photograph by Adolphe Duperly) ...

There are "SPECIMEN" copies known of both the Multiple Crown CA... AND... Multiple Script CA printings.

(Just why there should have been a printing on the Script CA paper, when the Multiple Crown CA issue had been scrapped is something that I have not been able to fathom!)



Anyhow, the Multiple Crown CA has the word "SPECIMEN" printed in black vertically reading up.

The Multiple Script CA "SPECIMEN" overprint is also vertical, but reading down.

Gibbons prices both specimen overprints at £500 each and the Script CA without the overprint at £14,000.

But WHY was the original issue aborted? Well, it seems that there was some internal unrest in the Island during



the years of the First World War and with the return of the Jamaican Contingent in 1919 there was anxiety among them about finding employment. The sugar industry had on the whole been prosperous, but the war's end had caused a slump in prices. Some rioting had taken place, and for some reason difficult to understand nowadays, the government felt that the picture on this stamp would add further instability to an already unstable situation. So, the stamp was withdrawn!

However, the design was resurrected for the top value of the Tercentenary Issue released on May 10, 1955. 🍁



GET ANOTHER PERSPECTIVE ON CANADIAN PHILATELY

Nearly half our members come from the other side of the pond.

They enjoy our quarterly award-winning magazine, 'Maple Leaves'.

Some of them come to our annual convention
(to be held this year in Dumfries - October 9-12).

Are you missing out?

For a complimentary copy of 'Maple Leaves' and further information write to the Secretary:
John Wright, 2 Normandale House, Normandale,
Bexhill-on-Sea, E.Sussex TN39 3NZ UK

SUBSCRIPTIONS PAYABLE IN CANADA

CANADIAN PHILATELIC SOCIETY
GREAT BRITAIN

Fellows of the Society

- 1961**
Fred Jarrett, OC, RDP (D)
- 1962**
Allen H. Christensen (D)
Dr. G.M. Geldert (D)
Vincent G. Greene, RDP (D)
- 1963**
Louis M. Lamouroux (D)
Russell T. Waines (D)
J. Watson Yuile (D)
- 1964**
Herbert Buckland (D)
Dr. C.M. Jephcott (D)
Stuart Johnstone (D)
- 1965**
Dr. Norman O. Boyd (D)
Alan G. McKanna
- 1966**
James Law (D)
E.A. Richardson (D)
- 1968**
Colin H. Bayley (D)
Mrs. Phyllis Geldert (D)
Harry Sutherland, RDP
G.E. Wellburn, RDP (D)
- 1969**
Leslie A. Davenport (D)
A. Graham Fairbanks (D)
Carl R. Mangold (D)
- 1970**
Frank W. Campbell (D)
- 1971**
Senator Henry D. Hicks (D)
Kenneth Rowe, RDP
- 1972**
Hon. George C. Marler (D)
- 1973**
Douglas A. Patrick (D)
James N. Sissons (D)
- 1975**
Me Guy des Rivières
Dr. Fred G. Stulberg
- 1976**
Charles P. De Volpi (D)
James E. Kraemer
James A. Pike (D)
- 1977**
Lt. Col. Andrew H.
Hinrichs (D)
- 1978**
Dr. R.A. Chaplin
Col. James T. De Voss, RDP
Dr. C.W. Hollingsworth
Col. Robert H. Pratt (D)
- 1979**
John F. Ayre (D)
Michael Madesker, RDP
- 1981**
Harold G. Gosney (D)
Michael Millar
- 1982**
S.C. Nickle (D)
Hans Reiche (D)
- 1984**
Dr. J.C. Arnell (D)
Arthur W. Leggett
Gustave E. Snels
- 1985**
Harry W. Lussey
C. Ronald McGuire
Mrs. Beverlie Clark
- 1986**
Major Richard K. Malott
Col. W.G. Robinson
- 1987**
G. Collins Baugild
Bernard A. Hennig, RDP
Dr. John J. MacDonald
W.H.P. Maresch
Susan M. McDonald (D)
Brig. Gen. George B.
Robertson (D)
- 1988**
Henri Gauthier (D)
Peter M. Mann
Allan L. Steinhart (D)
Major E.R. Toop (D)
- 1989**
David Dixon (D)
Ralph D. Mitchener (D)
- 1990**
Lorne W. Bentham
Andrew Cronin
Dr. Keith R. Spencer
- 1991**
Bernard Lavallée
Eric Rushton
George S. Wegg (D)
- 1992**
Lt. Col. C. Fred Black
Mme. Lola Caron
- 1994**
Lt. Col. William J. Bailey
- 1995**
R. Père J.C. Lafleur
- 1996**
Dr. Gray Scrimgeour
F. Burton Sellers, RDP
Joseph M. Shelton
- 1997**
Edmund Harris
Charles J.G. Verge
H. Geoffrey Walburn (D)
- 1998**
Richard Gratton
Murray Heifetz
Cimon Morin
J. Donald Wilson
- 1999**
John I. Jamieson
Denis Masse (D)
William E. Topping
- 2000**
Fr. Lawrence Anatole
Walker (D)
- 2001**
George B. Arfken
Dr. John M. Powell
David F. Sessions
- 2002**
Frank Alusio
Ron R. Brigham
Richard M. Lamb

ADVERTISING DEADLINE

for the next issue of The Canadian Philatelist is July 3

LA DATE LIMITE

pour soumettre votre publicité pour Le Philatéliste canadien est le 3 juillet

Cyndi Hood, 103 Lakeshore Rd., Suite 202, St. Catharines, ON L2N 2T6
(905) 646-7744 ext. 224 • fax (905) 646-0995 • magazine@trajan.ca

The Story of Pitcairn Island ...continued...

(Part 4)

After setting Captain Bligh and his men adrift, the first thing the mutineers did was to throw all the potted breadfruit trees overboard.



Fletcher Christian reportedly led the mutiny, but that is now a matter of dispute. However, as navigator, the destiny of the ship was, without question, in his hands and as a matter of course he assumed the role of leader of the group.

The mutineers set sail for Tubuai, a desolate island south of Tahiti. They arrived there on August 28, 1789, but met with hostility from the natives. Eventually, they sailed back to Tahiti to pick up the women they had dallied with during the breadfruit gathering expedition, then

they loaded hogs, goats, fowl and got on board and returned to Tubuai. Their stay was cut short when the natives attacked, and they returned to Tahiti where 16 of the mutineers decided to remain.

Christian and the remaining eight mutineers were determined to find an isolated asylum where R.M. Royal Navy would not find them. They sailed on the *Bounty* on September 23, 1789, with six Polynesian men and nineteen women [seven of whom later escaped on a small atoll].



Fletcher recalled reading in Bligh's papers about Captain Carteret's discovery of a small island, which he had named Pitcairn (after the look-out who first spotted it), and he set about finding it. As recounted early on in this story, Carteret's coordinates were wrong and Christian spent nearly four months and

over 3,000 miles of travel before he finally reached his objective on January 15, 1790.

A search party took the cutter and landed at the only possible approach to shore, which they named Bounty Bay.

After exploring the tiny island, the search party returned to report that it was uninhabited but heavily wooded and even had a variety of fruit trees. The terrain was hilly but a relatively flat area some 300 feet above sea-level would make a suitable place for their encampment.

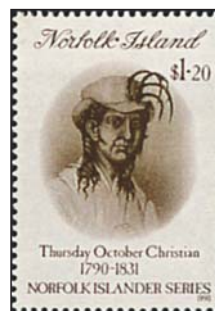


Everyone mobilized to convey ashore everything that was moveable. The ship was stripped of her sails and ropes and all useable wood and metal fittings were taken ashore.

Once the stripping was completed, the *Bounty* was set afire. There was no turning back now!

Before long the remains of the *Bounty* sank beneath the waves and all traces of her vanished from possible prying eyes aboard any passing ship. The mutineers now felt safe in their new haven. They could build a community for their children which were already on their way.

The first birth was the son of Fletcher Christian and his wife Mauatua (he called her Isabella). As he was born on a Thursday, they named him Thursday October Christian. Actually, there had been some doubt about the day because of the International Date-line, and in some records he is referred to as Friday October Christian. Take your pick...



As the Pitcairners (as I shall now call them) explored their new home, they found evidence of a previous human presence. They came across stone idols, wall carvings and stone implements.



Archeologists have found similarities between these artifacts and those found on Easter Island, which strongly suggests that western-bound floating communities, migrating from Central and South America, may have travelled directly along the 25th parallel (following currents and winds), reaching this tiny island as long ago as 600A.D.



The Norwegian explorer Thor Heyerdahl sailed his raft, Kon Tiki, from Peru to Polynesia in 1947 to prove this theory.

In time a village took shape, sheltered from view from the ocean by trees. Land was cleared to plant yams and banana palms which they had brought with them – many other vegetables and fruits were growing wild – and with the barn yard animals they had also brought (which multiplied rapidly), they had a good supply of meat, milk and eggs. The sea provided an ample supply of fish, easily caught from the shore.



The land had been divided equally between the white men, and the Polynesians resented their exclusion. And when one of the white man's wife died he demanded that he be given the wife of one of the Polynesians. Its not hard to figure out what happened then!

Towards the end of 1793 the Polynesian men slew four of the mutineers and injured two more. But the women then stepped in and killed the Polynesian men. That sad period of Pitcairn's history is referred to as "the massacre".

Eventually, the number of mutineers was down to two: Edward Young (who is now believed to have been the real instigator of the mutiny), and Alexander Smith.

One of the items brought ashore from the *Bounty* was Christian's Bible, given to him by his mother. It was apparently not used by the community at large until only Young and Smith were left. At that point Young used it to teach illiterate Smith to read and write.



When Young eventually died in 1800, Smith got "religion" and started to give religious instruction to the women and 20 children, using the Bible as his tool. At that time he

reverted back to his true name: John Adams. Why he signed on the *Bounty* manifest as Alexander Smith is not known.

But he was now the benign patriarch of all the island's families, which were multiplying nicely.

...to be continued...



PHSC

APS Affiliate 67;
PHS Inc. Affiliate 5A;
RPSC Chapter 134

The **Postal History Society of Canada** was founded to promote the study of the postal history of Canada and its provinces. It publishes the quarterly **PHSC Journal**, whose contents range from fully-researched feature articles to items of current interest – from the pre-stamp era through postmark specialities and regional histories to modern mail mechanization.

Each year the Society holds meetings at shows across Canada. The Annual Meeting is held in the early summer, and is supplemented by Regional Meetings, usually featuring postal history seminars given by Society members. Eight different Study Groups are devoted to the detailed examination of various specialized aspects of postal history.

Membership dues are \$15.00 per year, with a one-time admission fee of \$1.00. For a membership application form please contact the Secretary, R.F. Narbonne, 216 Mailey Drive, Carleton Place, Ontario K7C 3X9.

Guidelines for Judging Youth Exhibits

Directives pour Juger les Collections Jeunesse

AGE GROUP REQUIREMENTS

What can be expected from an exhibitor in the different Age Groups in reference to the various criteria.

AGE GROUP "A" (13 to 15 years)
From an exhibitor in this Age Group
the following criteria are expected:

A. TREATMENT

I. Plan/Structure

A plan subdividing the exhibit in main points and subdivisions, not an inventory.

II. Explanations

Simple explanations concerning the material (for Thematic exhibits subject bound explanations, for Traditional exhibits philatelic explanations, etc.).

III. Development

The development of the exhibit should be clear from the beginning. The extent of the development is in compliance with the plan.

IV. Proper Classification of Material

The proper classification of the material should be a strengthening factor. Material shown without complying with this condition brings only an extension of the volume of the exhibit and not the quality.

B. KNOWLEDGE/PHILATELIC KNOWLEDGE

I. Philatelic Knowledge

Differentiation of the various kinds of stamps (postage stamps, definitives, commemorative stamps, official stamps, postage due stamps, special delivery stamps, parcel post stamps, etc.).

The exhibit contains some letters, postal stationery, cancellations, coil stamps, multiples, etc.

Explanations of types of separation and perforation as well as watermarks. Explanation of some important postage rates for letters, e.g. registered letters, registered letters with an acknowledgment of receipt, special delivery, insured letters.

Only mail that passed the proper postal stream and has the right postage should be shown.

Postal stationery cuttings should not be used.

Cancellations related to the topic of the exhibit should be built in.

CE QUI EST DEMANDÉ DANS CHAQUE CLASSE D'ÂGE

Que doit-on trouver dans une collection selon le Groupe d'Âge et pour chaque critère ?

GROUPE D'ÂGE "A" (13 à 15 ans)
On attend d'un exposant de cette Classe d'Âge
l'application les critères suivants:

A. TRAITEMENT

I. Plan/Structure

Un plan divisant la collection en chapitres essentiels et en sous-chapitres, mais pas un inventaire.

II. Explications

Des explications simples concernant le matériel (pour les collections thématiques, des explications liées au sujet, pour des collections traditionnelles, des explications philatéliques.)

III. Développe

Le développement de la collection doit être clair depuis le début. L'importance du développement est en conformité avec le plan.

IV. Classification Correcte du Matériel

La classification correcte du matériel doit être un facteur fort et important. Le matériel présenté sans remplir cette condition ne peut conduire qu'à une extension en volume de la collection, mais pas en qualité.

B. CONNAISSANCES/ CONNAISSANCES PHILATÉLIQUES

I. Connaissances Philatéliques

Différencier les diverses variétés de timbres (timbres-poste, usage courant, commémoratifs, timbres officiels, timbres taxe, timbres de distributions spéciales, timbres pour colis postaux, etc.)

La collection contient quelques lettres, entiers, oblitérations, roulettes, multiples, etc.

Présence d'explications sur les dentelures et les perforations, et aussi sur les filigranes.

Présence d'explications sur quelques tarifs postaux importants tels les lettres recommandées, les lettres recommandées avec accusé de réception, livraison spéciale, lettres chargées.

Seul le courrier empruntant le système postal normal et affranchi au bon tarif doit être présenté

Les entiers découpés sont à proscrire.

Les oblitérations relatives au sujet doivent être présentées sous fenêtre.

C. MATERIAL

I. Relation Between the Available Stamps and Documents

The relation between the stamps and documents is to be considered. The exhibit does not contain only stamps or only documents, with the exception of Postal History and Postal Stationery that, by rule, contain only covers and postal documents.

II. Condition of Stamps and Documents

The stamps must be undamaged and clean (no tears, thin spots, discoloration, etc.).

III. Cleanliness of the Cancellation

Clean and readable cancellations (not only indefinite parts in a corner of the stamp or black circle segments; the cancellation should be recognizable as a postmark). Cliché obliterations (printed cancellations) are undesirable.

Date stamps are to be preferred to machine cancellations with lines or slogans. When the motive of the stamp is important, the cancellation should not conceal that part of the stamp; it should nevertheless be readable and recognizable as a postmark.

IV. Existence of Significant Stamps and Documents

For the definition of significant material we can offer the following comparison:

Less Significant Material

- Detached stamp
- Cancelled to order
- Cover with usual postage
- Material frequently found
- Cover with mixed postage
- Cover without concordance between stamp and cancellation

More Significant Material

- Stamp on cover
- Cover having gone through the postal system
- Property stamped cover
- Special sending type
- Rare material
- Cover with a single or more stamps of identical type
- Cover where cancellation and stamp are largely concordant

The exhibitor also shows stamps on covers, especially on covers having seen normal postal use.

D. PRESENTATION

Creating an introductory page. Pleasant presentation of the exhibit. Correct arrangement of the material on all sheets. Uniform outlining of stamps and documents. Clean and readable writing, without errors, the technique and the type of writing is left at the discretion of the exhibitor. Balanced impression of all sheets

C. MATÉRIEL

I. Rapport Entre les Timbres Disponibles et les Documents

On doit tenir compte du rapport entre les timbres et les documents. La collection ne doit pas contenir soit uniquement des timbres soit uniquement des documents, à l'exception des collections d'Histoire Postale et d'Entiers qui, par définition ne contiennent que des documents.

II. Condition des Timbres et des Documents

Les timbres doivent être en bon état et propres (sans déchirures, amincis, décolorations, etc.)

III. Propreté des Oblitérations

Les oblitérations doivent être propres et lisibles (et pas seulement un morceau dans le coin du timbre ou un arc de cercle noir. L'oblitération doit être reconnaissable comme une marque postale). Les oblitérations cliché (oblitération imprimées) sont indésirables.

Les cachets à date sont préférables aux oblitérations mécaniques avec des lignes ou des slogans. Lorsque le motif du timbre est important, l'oblitération ne doit pas cacher cette partie du timbre, mais elle doit être cependant lisible et reconnaissable comme une marque postale

IV. Présence de Timbres et Documents Intéressants

Pour la définition du matériel intéressant, on peut se reporter à la comparaison qui suit :

Matériel Moins Intéressant

- Timbre détaché
- Oblitéré sur commande
- Courrier suraffranchi
- Courrier normal
- Matériel commun
- Affranchissement mixte
- Enveloppe où le timbre et l'oblitération ne correspondent pas

Matériel Plus Intéressant

- Timbre sur enveloppe
- Enveloppe voyagé par la Poste
- Courrier au tarif
- Courrier particulier
- Matériel rare
- Aff. avec timbres du même type
- Enveloppe où le timbre et l'oblitération sont concordants

L'exposant peut présenter des timbres sur lettre, et surtout sur des lettres ayant eu une utilisation postale normale.

D. PRÉSENTATION

Présence d'une page d'introduction. Présentation agréable de la collection. Disposition correcte du matériel sur chaque feuille. Encadrements uniformes des timbres et des documents. Écriture claire et lisible, sans fautes d'orthographe. La technique et le type d'écriture sont laissés à la discrétion de l'exposant. Impression d'équilibre sur chaque feuille.

AGE GROUP "B" (16 to 18 years)

An exhibitor in this Age Group should comply with the following additional conditions:

A. TREATMENT

I. Plan/Structure

A good development of the Plan with detailed subdivisions.

II. Explanations

The explanations address both, the philatelic and specialized points of view.

III. Development

The degree of development is far more advanced concerning the structure as well as the treatment of the exhibit. Knowledge is clearly discernible. The exhibit has matured.

B. KNOWLEDGE/PHILATELIC KNOWLEDGE

I. Philatelic Knowledge

Flaws in plates, varieties, types of printing, errors in printing, etc. are shown and explained. Absence of cancelled-to-order covers (CTO). Absence of cliché cancellations, printed to order (PTO). Display concordant cancellations on philatelic documents.

II. Utilization of Literature and Research

The knowledge of philatelic literature should be clearly visible. A philatelist, in this Age Group, has at his/her disposal specialized catalogues, handbooks, manuals and magazines.

C. MATERIAL

I. Relation Between the Available Stamps and Documents

The arrangement of stamps and documents in the exhibit is well balanced.

II Condition of Stamps and Documents

Covers must be clean and without folds. An improvement in selection of materials over the previous Age Group is expected.

III. Existence of Important Stamps and Documents

Exhibitor shows an increase in documents with a variety of postal usages. Documents have proper rates with overfranked covers fully explained.

D. PRESENTATION

Presentation should compliment the exhibit's treatment by a general clarity of lay-out.

GROUPE D'ÂGE "B" (16 à 18 ans)

Un exposant de ce Groupe d'Âge doit se conformer aux conditions complémentaires suivantes:

A. TRAITEMENT

I. Plan/Structure

Un bon développement du plan avec des sous-chapitres détaillés.

II. Explications

Les explications doivent présenter à la fois les points de vue philatéliques et spécialisés.

III. Développement

Le degré de développement est bien plus avancé tant dans la structure que dans le traitement de la collection. Les connaissances sont clairement visibles, la collection a mûri.

B. CONNAISSANCES/ CONNAISSANCES PHILATÉLIQUES

I. Connaissances Philatéliques

On montre et on explique les défauts de gravure, les types d'impression, les erreurs d'impression, etc. Absence d'enveloppes oblitérées sur commande (CTO) Absence d'oblitérations cliché imprimées sur commande (PTO)

II. Exploitation de la Littérature et Recherche

La connaissance de la littérature philatélique doit être clairement visible. Un philatéliste de ce Groupe d'Âge a, à sa disposition, des catalogues spécialisés, des dictionnaires, des manuels et des magazines.

C. MATÉRIEL

I. Rapport Entre les Timbres et les Documents Disponibles

La répartition des timbres et des documents dans la collection est bien équilibrée

II. Condition des Timbres et des Documents

Les enveloppes doivent être propres et sans plis. On attend une amélioration dans la sélection du matériel par rapport au Groupe d'Âge précédent.

III. Présence de Timbres et de Documents Intéressants

L'exposant montre une augmentation de variétés de documents à usages postaux différents. Les documents sont à des tarifs corrects, et les courriers suraffranchis sont bien expliqués.

D. PRÉSENTATION

La présentation doit rehausser le traitement de la collection par une mise en page claire et soignée.

AGE GROUP "C" (19 to 21 years)

In addition to the preceding criteria the exhibitor, in this Age Group, is expected the following:

A. TREATMENT

I. Plan/Structure

The Plan is constructed, mostly, on the pattern of exhibits in the Senior Classes.

II. Explanations

Detailed and precise explanations; use of literature and research must be obvious.

III. Development

The degree of development of the exhibits emulates and is within reach of an exhibit in Senior Classes.

B. KNOWLEDGE/PHILATELIC KNOWLEDGE

I. Philatelic Knowledge

The exhibit should include all particulars of the chosen subject and present the corresponding explanations.

All documents are precisely and appropriately described, according to the type of the exhibit, topically, philatelically, scientifically, historically, etc.

II. Utilization of Literature and Research

Utilization of the existing specialized literature through books, lectures, libraries, specialized manuals and articles.

C. MATERIAL

I. Relation Between the Available Stamps and Documents

The selection of material is made according to the principles of the formation of exhibits in the different competition classes.

II. Condition of Stamps and Documents

The illustration on a cut stamp should not be touched by the process used in cutting. Bisects and other officially sanctioned alterations to stamps are not affected by this rule. The exhibit contains neither falsifications nor forgeries of stamps, documents or cancellations. It is expected that the exhibitor is informed about these materials and had the opportunity to ascertain the authenticity of the materials personally or by authorized experts.

III. Existence of Significant Stamps and Documents

The exhibitor makes sure that the exhibit has no to-order cancellations which also applies to First Day Covers (FDCs).

Significant and rare materials are more in evidence with more common materials in the background.

IV. Presentation

Materials are presented on paper whose colour is not distracting. Presentation techniques should be consistent and aiding in the understanding of the exhibit. Display of important items should not obstruct the totality of the exhibit.

GROUPE D'ÂGE "C" (19 à 21 ans)

Dans ce Groupe d'Âge, l'exposant devra, en plus des critères précédents, appliquer ceux qui suivent :

A. TRAITEMENT

I. Plan/Structure

Le plan est construit essentiellement sur le modèle des présentations de la Classe Adulte.

II. Explications

Les explications doivent être détaillées et précises. L'utilisation de la littérature et la recherche doivent être évidentes.

III. Développement

Le degré de développement de la collection doit être proche, et souvent atteindre celui d'une présentation en classe Adulte.

B. CONNAISSANCES/ CONNAISSANCES PHILATÉLIQUES

I. Connaissances Philatéliques

La collection doit présenter toutes les particularités du sujet choisi avec les explications correspondantes.

Tous les documents sont décrits de façon précise et cohérente, et, selon le type de collection, d'une manière thématique, philatélique, scientifique, historique, etc.

II. Utilisation de la Littérature et Recherche

On doit clairement percevoir l'utilisation par l'exposant de la littérature spécialisée existant dans les livres, revues, bibliothèques, manuels spécialisés, articles, etc.

C. MATERIEL

I. Rapport Entre les Timbres et les Documents Disponibles

La sélection du matériel est faite selon les principes du montage des collections dans les différentes classes de compétition.

II. Condition des Timbres et des Documents

L'illustration sur un timbre découpé, ne doit pas être touchée par le procédé de découpage (Les timbres coupés en deux officiellement, et les autres altérations de timbres autorisées par un gouvernement ne relèvent pas de cette règle. La collection ne contient aucun matériel faux ou falsifié (timbres, documents ou oblitérations). L'exposant doit être au courant de l'existence de ces matériels, et il a la possibilité d'établir leur authenticité soit personnellement, soit par des experts reconnus.

III. Présence de Timbres et Documents Intéressants

L'exposant doit s'assurer que la collection ne contient pas d'oblitération cliché, ni de "Premiers Jours".

Le matériel intéressant et rare est mieux mis en évidence que le reste du matériel plus commun.

IV. Présentation

La couleur du papier utilisé pour le montage ne doit pas être gênante pour le spectateur. Les techniques de présentation doivent être cohérentes et aider à la compréhension de la collection. La présentation de matériel important ne doit pas masquer l'ensemble de la collection.

This column reports the results of philatelic and literature awards in national exhibitions in Canada and the awards won by Canadian owned exhibits and exhibits of Canadian material in international exhibitions. Results may be sent to: 309-540 Buckland Avenue, Kelowna, BC, V1Y 5Z4.

Cette chronique liste les résultats obtenus dans les expositions philatéliques et de littérature nationales ainsi que les résultats obtenus par les Canadiens ou les collections de matériel canadien dans les expositions internationales. Les résultats devraient être envoyés au 309-540 avenue Buckland, Kelowna, BC, V1Y 5Z4.

ROYAL*2002*ROYALE

March 22-24, 2002, Edmonton.

Jury: Gray Scrimgeour, Chair, Keith Griffiths, Murray Heifetz, Jim Kraemer, Peter McCann and Apprentices: Rob McGuinness, Michael Peach and Joel Weiner

Gold

“Bridgetown” (AB) – Barbados: 1765 to 1882 – Grand Award
Kevin O’Reilly (NT) – The Eastern Arctic Patrol, 1922 – 1965 – Reserve Grand Award

R. G. Armstrong (NZ) – London General Post 1661 – 1839

Jenny Banfield (NZ) – Health. A Common Ground Between Nations

Norman Banfield (NZ) – Russia – Airmails 1922 – 1950

Ron Brigham (ON) – The Dominion of Canada: The Maple Leaves and Numerals, 1897-1902

Richard Fleet (BC) – Province of Canada – 1865 Second Bill Stamp Issue

Horace Harrison (MD) – Canadian Money Letters

Werner Helms (CA) – German North Atlantic Catapult & Feeder Flights 1929 -1939

Robert Heasman (BC) – Machine Cancels of Canada 1896 – 1902

Dick Malott (ON) – Canadian Interrupted Covers to, from and within Canada 1918 – 1984

Philip Parker (NY) – Zeppelins: The Portuguese Connection

Bill Pawluk (AB) – Canada: Postal Regulations, Rates and Usages, Domestic and International Mail, 1897 – 1911

“Rockey” (BC) – The First Decimal Issue of Canada 1859 – 1868

Mike Shand (ON) – The Air Mails of New Zeland 1919 – 1940

Susan Sheffield (AB) – Muskoka’s Resort Hotel Post Offices

William Topping (BC) – Yukon Airways – A Pioneer Air Mail Company

Vermeil

Herb McNaught (ON) – Canada 1897 Jubilees

Harry Voss (SK) – Canadian Re-Entries 1852-1953

Peter Jacobi (BC) – Mining – B. C.’s Heritage

Ian Mctaggart-Cowan (BC) – Law Stamps of Yukon

Barry Brown (BC) – Canadian Revenues for War: World War I & II

Ed Kroft (BC) – Rishon Le Zion

Rodney Paige (ON) – British Cancels: The Early Years

Francis Au (BC) – International Routes from Hong Kong

Ken Ho (AB) – The Varieties of EFO Elements and Compounds Philately

George Constantourakis (QC) – History of Maximaphily

Neil Hunter (ON) – Evolution of Air Mail – Toronto, Canada: From Canuck to Concorde

Jim Brown (BC) – Aircraft Overprints Producing Air Mail Postage

Dick Malott (ON) – Armed Forces Air Letters, Forms and Cards

Ted Nixon (ON) – Canada – Airmail Rates & Routes 1937-42

Silver

Glen Lundeen (AB) – The War Tax Stamps of Canada

Fred Meyer (SK) – Canadian Coils 1913 – 2000

François Brisse (QC) – Les marques postales et les oblitérations de Bordeaux. 1690 – 1870

Earl Covert (AB) – Permits

Steven Luciuc (SK) – Military Conflict and Saskatchewan 1885 – 1945

Denis Gallagher (NZ) – Airmails: 1909 – 1929

John Powell (AB) – Iraq Postal Stationary: Emphasis on Air Letter Cards and Aerogrammes

James Taylor (AB) – St. Pierre & Miquelon Airmail 1931 – 1979

Raymond Ireson (QC) – The Development of Aviation and Air-mail Services in Columbia

Silver-Bronze

Dean Mario (SK) – Newfoundland in the Second World War, 1939 – 1946

Jim Measures (ON) – Zelandia

Peter Smith (AB) – Vanuatu’s Failed Mail – Where It Went and Why

Bill Bailey (BC) – Gold Coast Airmails

Gordon Mallett (AB) – Three Weeks in December 1928 – Canada’s Experimental Prairie airmails

Bronze

John Rodgers (SK) – Go West Young Man

Marty Zelenietz (NS) – I’ve Got a Little List: My Japanese Birds on Stamps

ONE FRAME

Gold

Jerome Kasper (CA) – SCADTA Postal Stationery

Vermeil

R. G. Armstrong (NZ) – Returned Letters, ex Dead Letter Office London

Jerome Kasper (CA) – New Zeland Prisoner of War Aerogrammes

Rick Oxenham (NZ) – The Pacific Clippers 1935 – 1941

Neil Hunter (ON) – The Mackenzie River Air Mail Route

Bill Bartlet (BC) – LATI: Linee Aeree Transcontinentali Italiane
David Lu (CA) – The International Aerogrammes of China (1948-9)

Jim Brown (BC) – British Columbia Airways Limited Air Mail Service Between

Victoria & Vancouver – July 23 to Aug. 24, 1928

Silver

Herb McNaught (ON) – Canada, Toronto Oval Numeral Duplexes, 1881 – 91

Russel Sampson (AB) – A Selection of Perfins on the Edward VII Issue of Canada

Silver-Bronze

Leslie Clinton (SK) – Saskatchewan Military Post Offices
Bill Bailey (BC) – British Togoland Overprints
Leslie Clinton (SK) – Royal Welcome to Canadian Troops, 1939

Bronze

Nino Chiovelli (AB) – Balloon Post Originating in Canada and
Some Balloon Flights by Canadian Pilots Outside of Canada

JUNIORS

Vermeil

Kelly Liusz (AB) – Christmas in Canada

Silver

Kyle Miller (NS) – Helicopters
Kurt Glatzfelder (QC) – Chess: Game of Champions

Randi Gombos (AB) – Angels
Angela Miller (NS) – Ballet
“Max” (QC) – Les Reptiles
James Barron (AB) – Flying Through the 20th Century
Francis King (QC) – Les poissons tropicaux
Francisco Yurich (AB) – Sports played on different surfaces
Orrin Esau (AB) – Track and Field

Silver-Bronze

Orrin Esau (AB) – Travel by Rail, Water and Air
Tatjana Yurick (AB) – Children
Mickey Gombos (AB) – Greek Mythology
Chris Faulkner (NS) – Space
Olivia Thomas (NS) – Dogs

Early German Cancels

By “Napoleon”

Germany 1921 30 pf

One of the more readily recognizable early German varieties occurs on the 30 pf green numeral design from the 1921 definitive set with the lozenges watermark. A green triangle appears in the left loop of the zero, at the bottom of the numeral. The triangle comes in various sizes, two of which are shown in the illustration. Both the small triangle (upper left stamp) and normal triangle (upper right stamp) are seen readily without a magnifying glass.

The ordinary stamp is listed at minimum catalogue value mint hinged (MH), and 2 marks postally used. The variety is 40

marks MH and 125 marks postally used.

The same stamp was released later in 1921 with the network watermark, but the variety is not listed with that watermark. Stamps with the lozenge watermark were surcharged in 1923, during Germany's period of very high inflation. The normal surcharged stamp is minimum catalogue value if MH and 4 marks postally used. The variety is 40 marks MH and 500 marks used.

While expertization is required to determine postal use, a handy book is Inflation-Berlin's Book 13, Falsch-Stempel der

Inflation, 1919-1923. The book is in German, but identifies known false cancellations by format and city, meaning no knowledge of German is needed. Finding a cancel in the book strongly suggests that it will be difficult to get the stamp expertized as postally used. Absence of a cancel from the book suggests it might be worth the expertizing fee to see if the stamp was postally used.

As usual, images are available in color to those who e-mail me with requests (napoleon@voyager.net). ♣

YOU'RE INVITED TO JOIN THE BRITISH NORTH AMERICA PHILATELIC SOCIETY

BNA Topics, quarterly journal

BNAPortraitS, quarterly newsletter

Benefits include annual conventions in the United States and Canada. More than 20 study groups actively investigating specialty areas, ranging from Large Queens to first day covers. Regional groups are located in many cities in Canada and the U.S.

Contact the Secretary: **Peter Jacobi**
5295 Moncton Street
Richmond BC V7E 3B2 Canada

e-mail: beaver@telus.net

Web site: <http://www.bnaps.org>



BNAPS – The Society for Canadian Philately

Scandinavian Collectors Reformat Posthorn Journal

The Scandinavian Collectors Club (SCC), specializing in the stamps and postal history of the Nordic countries, has changed the size of its quarterly journal for the first time since the publication was launched in 1943. *The Posthorn* has been printed in a 6x9-inch format until the recent first issue of Vol. 59 dated February 2002, which is printed in the larger 7x10-inch size.

The purpose in making the journal physically larger is to provide improved legibility and better quality illustrations. The change is one of several being implemented in an effort to upgrade the quality of the journal and make it one of the leading specialized society publications.

Beginning with the February 2000 issue, the paper was upgraded to a glossy finish in order to provide improved illustrations.

In the future, experiments will be conducted with implementation of colour.

Further information concerning SCC is available on the Club's website at www.scc-online.org, or from SCC's Executive Secretary, PO Box 13196, El Cajon, CA 92022.

online.org, or from SCC's Executive Secretary, PO Box 13196, El Cajon, CA 92022.

APS Assisting with Youth Workshop

As part of the American Philatelic Society's efforts to promote stamp collecting to young people, the Society's education department is assisting with the organization of a workshop to be held at Cape Cod, Massachusetts in mid-July.

The workshop will review the resources currently available for philatelic youth programs. Participants will revise and update existing materials and, where necessary, develop new materials which will be easily accessible for anyone interested in working with "stamps and kids." It is expected that the workshop will produce a guide for teachers and youth leaders as well as a new *APS Youth Handbook*.

In addition to the APS representatives, the workshop will include participants from the Postal History Foundation of Tucson, Arizona, Stamp Camp USA and the Junior Philatelists of America. Participants will

travel at their own expense. A generous grant from the World Columbian Expo of Chicago will fund the publication of the materials produced by the workshop.

Any member who wishes to submit ideas or materials for the benefit of the workshop may submit them to Kim Kowalczyk, the Society's Director of Education. We ask that your contributions be in State College by June 14 in order that they may be reproduced and disseminated to all participants prior to the workshop.

Information on the 50,000+ member American Philatelic Society is available from its website at www.stamps.org or by writing APS, PO Box 8000-N, State College, PA 16803. Membership includes a subscription to the Society's monthly magazine, *The American Philatelist*; eligibility to obtain a special stamp insurance policy; the ability to borrow books from the largest public philatelic library; use of the Society's on-line StampStore and through the mail sales circuits; and discounts on expertizing and Society publications. 🍁

A Special Introductory Offer

for *new subscribers to *Canadian Stamp News*

Designer-signed Tourist Attraction First-Day Covers



Renewal subscriptions will be entered in a draw to win one-of-two Toronto Blue Jays 25th Season Stamp & Medallion Set



These Designer-signed First-Day Covers are not available anywhere else!

Subscribe today to see what you've been missing!

*Rules: New subscriptions are defined as a subscription delivered to a person whose name has not received *Canadian Stamp News* for 12 months, at an address which has not received *Canadian Stamp News* for 12 months. All other subscriptions will be entered in our renewal draw for a Toronto Blue Jays 25th Season Stamp & Medallion Set. All new subscriptions must be paid in full to be eligible to receive the Designer-signed First Day Covers. • Not valid with any other promotion. • *Canadian Stamp News* (Trajan Publishing) will deliver the Designer-signed First Day Covers as soon as practical after a subscription has been ruled eligible. • To be eligible for the draw, renewal subscriptions must be paid in full, and received on or before August 31, 2002. The draws will take place on Monday, September 16, 2002, and the winners will be contacted to arrange delivery. • Not valid where prohibited by local law. Not valid with any other promotion. (No purchase necessary. Contact *Canadian Stamp News* for full details).

Visa MasterCard Cheque / Money Order

Card #: _____ Expiry: _____

Signature: _____

Name: _____

Address: _____

City: _____

Postal Code: _____ Prov.: _____

Phone: _____ Fax: _____

Canadian Stamp News

202-103 Lakeshore Rd., St. Catharines, ON L2N 2T6

(905) 646-7744 • Fax: (905) 646-0995

• E-mail: office@trajan.ca

1 Year \$36.33 (\$33.95 + \$2.38)

• \$39.04 (HST included - NS, NF, NB) • U.S. \$33.95 (U.S. funds)

2 Years \$64.15 (\$55.95 + \$4.20)

• \$68.94 (HST included - NS, NF, NB) • U.S. \$55.95 (U.S. funds)

FDC-PHO2

Harold Beaupre D.F.C. 1918-2002

The philatelic community was saddened to learn of the death of Harold Beaupre at the Kitchener-Waterloo Health Centre on March 26, 2002. Left to mourn are his wife of 57 years, Margaret, two sons, two daughters, six grandchildren and one great-grandchild. He was 83.

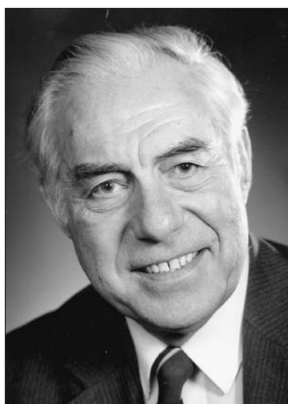
Harold, born October 4, 1918, served overseas during World War II with the Royal Canadian Air Force until his plane was shot down in 1943 over enemy territory. The pilot perished in the fiery crash, but somehow Harold and the crew members miraculously survived without serious injuries.

Following his capture by enemy ground troops, he was assigned to Stalag Luft 3, an Air Force prisoner-of-war camp where the first mass-prisoner escape of the war was engineered and executed in 1943. The daring escape inspired the 1963 best-seller, *The Great Escape*. The book was subsequently made into a hit movie by the same name starring veteran Hollywood actor Steve McQueen.

On his return to Canada following the war, Harold operated an interior decorating business until 1979. Following his retirement as the proprietor of Beaupre's Interior Limited, Harold took up stamp dealing full time.

At an age when many people his age while away their winters in sunny Florida and their summers at the cottage, Beaupre in his seventies still put in fifty-five-hour weeks in his new business. Wednesdays, the day that his store was closed, he generally drove to Toronto to pick up rush orders for his customers and stock to replace sold-out items.

A member of the leading national philatelic societies, Harold was also a past president of the Canadian Stamp Dealers' Association (CSDA).



With his great empathy for young collectors, Beaupre was a dedicated supporter of junior stamp clubs. Not content with merely providing area youngsters with his own stamps, he successfully convinced the CSDA of the need to supply youth clubs with philatelic materials to sustain their interest in the hobby.

His personal collecting interests included Scouts on stamps, Small Queens, and the stamps of Germany. For many years, he was actively involved as a member of the Kitchener-Waterloo based Germany Philatelic Society at one time headed by James E. Kraemer, FRPSC, and a past president of our Society.

Harold has donated his considerable philatelic literature holdings -handbooks, catalogues, manuals, pamphlets and brochures- to the local stamp club who has arranged that the donated items form the nucleus of what is to be known as the Harold Beaupre Philatelic Library. Envisioned to become a lending library for area collectors, the collection is to be housed in the retail premises of R.J.M. Stamps, Waterloo, the sole surviving retail stamp store in the Twin Cities of Kitchener-Waterloo and surrounding region. John McAndrew, store proprietor, has agreed to administer and maintain the library for the benefit of area philatelists.

Although Harold had not been well during his last few years of life, he continued to work on his stamps whenever possible almost until the day he died. Harold has said many times that he enjoyed the stamp business because of the people. What nobler reason can there be to pursue any business? He will be missed by the many people he served in his lifetime.

Our heartfelt condolences go out to Mrs. Beaupre and to the Beaupre family members. 🍁

CLASSIFIED ADVERTISING ORDER FORM / BON DE COMMANDE-ANNONCES CLASSÉES

RATES: 20 cents per word; minimum charge \$5.00 per insertion. Boxed Classified \$12.00/column-inch. Please indicate desired heading. **Classified ads must be paid in advance. GST must be paid on classified ads.**

C.P. Classified Ads
103 LAKESHORE RD. SUITE 202,
ST. CATHARINES, ON L2N 2T6
CALL Cyndi at
(905) 646-7744, ext 224
FAX (905) 646-0995 or
email: magazine@trajan.com

TARIFS: 20 cents le mot; tarif minimal: 5\$ par insertion. Petites annonces encadrées: 12\$ par pouce de colonne. Prière d'indiquer la rubrique désirée. **Les petites annonces sont payables d'avance. La TPS est payable sur les petites annonces.**

Classification:

**ALL CLASSIFIED ADS MUST BE PREPAID.
TOUTES LES ANNONCES CLASSÉES DOIVENT ÊTRE
PAYÉES D'AVANCE.**

PLEASE CHECK ONE / PRIÈRE DE COCHER UNE CASE.

CHEQUE / CHÈQUE MONEY ORDER / MANDAT
make cheques payable to: / chèques payable à: Trajan Publishing



Card No. / no. de carte: _____

Exp. Date / date d'expiration: _____

Name / nom: _____

Signature: _____

Check your advertisement for accuracy of the first insertion. **CANADIAN PHILATELIST** cannot be responsible for the cost of more than one incorrect insertion.

Vérifiez l'exactitude de l'annonce à sa première insertion. **Le Philatéliste canadien** n'est responsable que du coût d'une seule insertion erronée.

**COPY CHANGES NOT ALLOWED DURING LENGTH OF AD'S RUN /
AUCUN CHANGEMENT DE TEXTE N'EST AUTORISÉ PENDANT LA PARUTION
DE L'ANNONCE.**

Abbreviations, initials and phone numbers count as one word. /
Les abréviations, initiales et numéros de téléphone comptent
pour un mot.

3 _____
6 _____
9 _____
12 _____
15 _____
18 _____
21 _____

OF ISSUES TO RUN IN / Parution dans:
numéros de la publication. _____

TOTAL # OF WORDS / Nombre de mots: _____

COST / Coût: \$ _____

+ 7% GST / TPS (In / au Canada) _____

= **TOTAL COST / Coût total \$** _____

All ads require name, address and phone number with order; they do not need to be used in your copy.

Pour commander, indiquez vos nom, adresse et no. de téléphone, qu'il n'est pas indispensable d'utiliser dans le texte de l'annonce.

ROYAL*2003*ROYALE

Directions to Hanover, ON

Between May 30 and June 1, 2003, the Saugeen Stamp Cub will host the 75th convention of The Royal Philatelic Society of Canada, ROYAL*2003*ROYALE. The convention activities will be held in the Hanover Regional Aquatic Centre and Coliseum, 268 7th Avenue, Hanover, Ontario.

People have asked, "How do I get to Hanover?" Here are some suggestions for the three main routes for driving to Hanover, starting from the east and working west:

(1) From Toronto (and points east): Take the 401 then 410 to Brampton. Then drive north on Highway 10, through Orangeville and Shelburne, to Flesherton and the junction with (old) Highway 4. Turn left (west) and continue on (old) Highway 4 to Hanover. From Brampton to Hanover by this route is about 125 km, with an estimated driving time of 1:45 to 1:50.

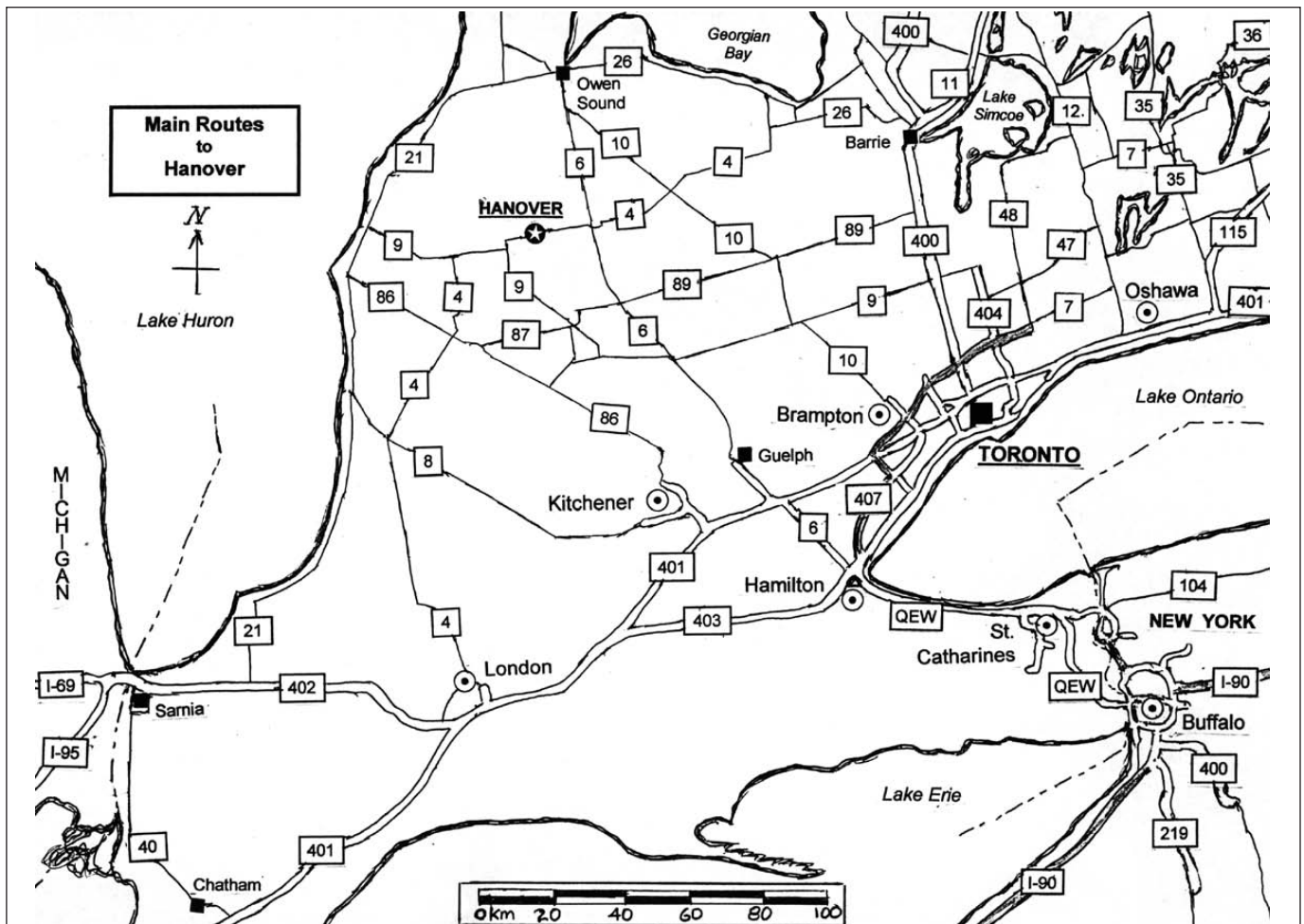
(2) From the Hamilton area (northern New York state, the Niagara peninsula and areas to the east and west of Hamilton): From Hamilton proceed north on Highways 6 and 401 (and 6) to Guelph. Continue through Guelph on Highway 6, then through Fergus, Arthur, and Mount Forest to Durham and the junction

with (old) Highway 4. Turn left (west) and continue on (old) Highway 4 to Hanover. From Hamilton to Hanover by this route is about 160 km, with an estimated driving time of 2:05 to 2:10. From Guelph, it is about 107 km, with an estimated driving time of 1:25 to 1:30.

(3) From London (and the surrounding area): Drive north on Highway 4 through Exeter, Clinton, and Wingham until it meets with Highway 9. Then turn right (east) and continue on (old) Highway 4 through Walkerton to Hanover. From London to Hanover is about 168 km, with an estimated driving time of 2:05 to 2:10.

Maps showing these routes with more detailed driving instructions will be mailed to the stamp clubs in southern Ontario before the show.

Note: For drivers from outside this part of Ontario, the maintenance of some (formerly) provincial highways has been "downloaded" onto the counties. This map shows the "old" numbers that are still in use on these (now) county roads. *





President's Page / La page du président

by / par Charles J.G. Verge

Report of the President Royal Philatelic Society of Canada 74th Annual General Meeting West Edmonton Mall Convention Centre Edmonton, AB – March 23, 2002

1. INTRODUCTION

This is my second report to you as President of our Society. To work as your President is a rewarding activity; however, being successful at it requires the help and cooperation of many people and organizations. First, let me thank The RPSC's Executive Committee and its Directors as well as the Society's Past Presidents who have all been available for help, and advice. I also wish to thank Canada Post, the Officers and Directors of the APS, our sister Society, and the Canadian Stamp Dealers' Association for their help in making my task easier.

2. THE NATIONAL OFFICE

Our members continue to be served efficiently by the staff at Parr & Associates. Particular mention should be made of Andrew Parr, our Executive Director, and Daryl Oliver, Carol Law and Andrea Quinn. These are the people who are the front line to you, our members. Services to our members seem to run very smoothly as I have had very little need to get involved with the day-to-day activities as I received so few requests to do so.

3. THE CANADIAN PHILATELIST

As I mentioned last year the magazine is the number one service, and for some the only service, the Society offers to its members. The magazine has grown both in the quality and the quantity of its articles. The variety of writers has increased and advertising has almost doubled. This is due in large measure to the excellent editorship of Tony Shaman and our advertising manager Cyndi Hood of Trajan Publications. Virginia St-Denis is our publisher and she had written reports on our Convention for the last two years, and will do so again this year. These reports make the magazine very timely and are appreciated by our members. As a result of the increase in advertising-\$2298 for the Jan.-Feb. 2001 issue to \$4823 for the Nov.-Dec. issue with a high of \$5505 for the Sept.-Oct. issue. The magazine was increased by eight pages, six of which are dedicated to editorial content and two to additional advertising. The 20% sell-through rate of the magazine on the newsstands is within acceptable range and in line with other hobby publications. We averaged 110 copies sold of the 500 put on the newsstands in 2001. This is not a loss leader-the income pays for the additional printing-and there is an increase in visibility for *The Canadian Philatelist*

Rapport du Président

Société Royale de Philatélie du Canada
74e Assemblée Générale Annuelle
Centre des Congrès, West Edmonton Mall
Edmonton, Alberta – 23 Mars 2002

1. INTRODUCTION

Voici mon second rapport en tant que président de la Société. Être président n'est pas une tâche ingrate; remplir ce rôle avec succès nécessite cependant l'aide et la coopération de nombreux individus et organismes. Permettez-moi donc tout d'abord de remercier le comité exécutif de La SRPC et ses directeurs, ainsi que les anciens présidents de la Société pour leur disponibilité, leur soutien et leur assistance, ainsi que leurs conseils. J'aimerais également remercier Postes Canada, les dirigeants et administrateurs de l'APS, notre société sœur, et l'Association canadienne des négociants en timbres-poste qui ont contribué à alléger ma tâche.

2. LE BUREAU NATIONAL

Nos membres continuent à être servis de manière très efficace par le personnel de Parr & Associates. J'aimerais citer en particulier Andrew Parr, notre directeur administratif, ainsi que Daryl Oliver, Carol Law et Andrea Quinn. Ils sont tous les quatre en première ligne à votre écoute. Les services aux membres semblent fonctionner de manière parfaite puisque j'ai été peu appelé à me mêler des activités quotidiennes.

3. LE PHILATÉLISTE CANADIEN

Comme je l'ai déjà dit l'an dernier, le magazine constitue le tout premier service aux membres, et pour certains même, le seul et unique service. Il s'est amélioré tant par la qualité que la quantité de ses articles. La variété des personnes qui rédigent ces articles s'est multipliée et les annonces publicitaires ont pratiquement doublé. Ceci est dû en grande partie aux excellentes qualités de rédaction de Tony Shaman et de notre directrice publicitaire Cyndi Hood de Trajan Publications. Virginia St-Denis, qui est notre éditrice, rédige depuis deux ans des rapports sur notre congrès et sera de nouveau au rendez-vous au congrès de cette année. Ces rapports font du magazine un outil très opportun et nos membres les apprécient beaucoup. Suite à l'augmentation des annonces publicitaires (passées de 2 298 \$ pour le numéro de janvier-février 2001 à 4 823 \$ pour le numéro de novembre-décembre, avec un record de 5 505 \$ pour le numéro de septembre-octobre), le magazine compte huit pages supplémentaires, six d'entre elles ayant un contenu rédactionnel et deux consacrées aux publicités supplémentaires. Le taux de vente de 20 % du magazine dans les kiosques à journaux est acceptable et correspond à celui des autres magazines de loisirs. Nous avons vendu en moyenne 110 numéros en kiosque sur les 500 copies disponibles en 2001. Il ne s'agit pas de ventes à perte – le pro-

and for The RPSC. This exposure should help increase the membership numbers. It is interesting to note that the highest seller (150 copies) was the July-Aug. 2001 issue showing the stamp issued to commemorate former Prime Minister Trudeau while the March/April issue, with the 150th anniversary of the 3d Beaver on the cover had the least sales (86). There is therefore a need to look at the cover design of the magazine to see if by choosing it judiciously we can improve sales.

4. THE WEBSITE

Our website, www.rpsc.org, continues to improve and arrangements have been made with Richard Gratton, a Fellow of The RPSC, to translate our site. Once again, thanks to the diligent work of D. Robin Harris, our webmaster, the site maintained its 3-star level in the FIP World Wide Web Site Competition. The site continues to have more timely and detailed information about Canadian new issues than the Canada Post site and major changes were made to the reference section when the Canadian Postal Archives introduced its website.

5. CANADA POST CORPORATION

We continue to cooperate fully with Canada Post on many projects with many of our members sitting on the Stamp Advisory Committee. We respond to many letters received by Canada Post from embassies and consulates abroad, and develop new approaches to enhance our hobby. Fifteen years of successful lobbying by The RPSC will result in the announcement of a major new initiative by Canada Post which should please our members.

6. INTERNATIONAL

The major area of note in this item is the awarding to Ron Brigham of the Grand Prix d'Honneur at BELGICA 2001. Mr. Brigham becomes the first Canadian to win the World Stamp Championship and the first to do so in the third Millennium. Later this year, Harry Sutherland and I will represent Canada at the FIP Congress to be held in Seoul, Korea. The main item on the agenda for Canada will be to successfully shepherd the Single Frame Class through Congress.

7. FINANCES

Our finances are in good shape and our Treasurer, John Keenlyside, will be briefing you shortly on the state of our trea-

duit sert à financer l'impression des numéros supplémentaires – et *Le Philatéliste canadien* et La SRPC profitent d'une meilleure exposition qui devrait contribuer à faire augmenter le nombre des membres. Il est intéressant de noter que le numéro vedette (vendu à 150 exemplaires) fut celui de juillet-août 2001, illustrant le timbre commémoratif en l'honneur de l'ancien Premier ministre Trudeau, alors que le numéro de mars-avril qui mentionnait en couverture le 150e anniversaire du castor de 3 p. a enregistré le moins de ventes (86). Il paraît donc nécessaire d'accorder une attention toute particulière à la couverture de notre magazine et de voir si nous pouvons améliorer les ventes en la choisissant judicieusement.

4. LE SITE WEB

Notre site www.rpsc.org continue de s'améliorer, et il est prévu d'en traduire le contenu grâce aux services de Richard Gratton, Fellow de La SRPC. Une fois encore, grâce à l'excellent travail de notre webmestre, D. Robin Harris, notre site a conservé son statut 3 étoiles selon les critères de la FIP lors du concours des sites World Wide Web. Il continue de renseigner de manière plus détaillée et plus opportune sur les nouvelles émissions de timbres canadiens par rapport au site de Postes Canada, et d'importants changements ont été apportés à la section des références lorsque les Archives postales canadiennes ont lancé leur propre site.

5. SOCIÉTÉ CANADIENNE DES POSTES

Nous œuvrons toujours en étroite collaboration avec Postes Canada dans le cadre de nombreux projets. En effet, nombre de nos membres font partie du Comité consultatif sur les timbres-poste. Nous répondons par ailleurs à de très nombreux courriers reçus par Postes Canada provenant d'ambassades et de consulats à l'étranger, et nous mettons au point de nouvelles manières de rehausser nos activités. Les quinze années d'influence positive de La SRPC se traduiront bientôt par l'annonce par Postes Canada d'une nouvelle initiative importante qui devrait réjouir nos membres.

6. INTERNATIONAL

Le grand événement de cette rubrique est bien évidemment l'attribution du Grand Prix d'Honneur BELGICA 2001 à Ron Brigham, qui devient le premier Canadien vainqueur du championnat mondial de philatélie et aussi le premier vainqueur du troisième millénaire. Dans le courant de l'année, Harry Sutherland et moi-même représenterons le Canada lors du Congrès de la FIP qui se tiendra à Séoul en Corée. Le point le plus important de l'ordre du jour pour le Canada sera de défendre le projet de la catégorie des collections d'un cadre tout au long du Congrès.

7. FINANCES

Nos finances se portent bien, et notre trésorier, John Keenlyside, vous communiquera bientôt son rapport sur l'état de notre trésorerie. J'aimerais ici saluer publiquement la générosité de Madame Jacqueline Mitchener, épouse de notre regretté directeur et Fellow Ralph Mitchener, et remercier également la Fondation pour la recherche philatélique de La SRPC pour leurs importants dons financiers à la Société. Les formulaires de renouvellement d'adhésion à la Société ont été modifiés afin de

Check out Visitez
The RPSC le site web de
Web site at La SRPC

www.rpsc.org

sury. At this time, I would like to publicly recognize and thank Mrs. Jacqueline Mitchener, wife of our late Director and Fellow, Ralph Mitchener, and the RPSC Philatelic Research Foundation for their generous financial gifts to the Society. Society renewal forms were redesigned to allow members to make a donation to the Society starting in January 2002. So far we have received \$40 in U.S. funds and \$70 in Canadian funds from this initiative.

Although not a direct financial benefit to the Society, I would like to thank Ron Brigham for offering to provide, on a long-term basis, the Reserve Grand Award for the Exhibition component of our Conventions. This generous gift has already benefited the Convention organizing committee in Edmonton as it will those which follow. It is a substantial saving to their budget.

8. SOCIETY REJUVENATION

The Board has continued to work towards making changes to the structure and practices of The RPSC with a view to streamlining the operations of the Society. It is the Board's hope that we will be in a position to present the proposed changes to our members in time for our next Annual General Meeting in Hanover, Ontario.

9. MEMBERSHIP

Membership continues to be a major problem for the Society. Although we have increased our new members by 17.3% (129/110) our overall membership has decreased by 3.7% (2683/2779). Our new membership projects have not been as successful as they could have been. A few new subscriptions or membership applications have resulted from two initiatives tried in 2001: gift subscriptions and "insurance" advertising ads put in philatelic publications. In addition, we are currently unable to tell what new members result from newsstand sales of the magazine. I can only suggest that we will continue to undertake low cost initiatives to see if we can increase our membership. To that end, I have asked Frank Alusio, a Director of the Society, to come up with a proposal to recruit retired or soon-to-be-retired people. Mr. Alusio submitted a proposal to the Board which was considered and he was asked to refine it to see if there are any elements of the proposal that can be jointly undertaken by The RPSC and Canada Post.

10. CLOSING REMARKS

I am pleased with the achievements of the Society and your Board during the past year. I am less pleased with the lack of improvement in our membership numbers and will pledge once again to make that my number one priority for next year and the years to come. In closing, I would like to thank Alan Meech and his team on the well organized Convention and Exhibition that we are attending and I invite you all to join us for the 75th Convention in Hanover, Ontario.

Charles J. G. Verge, FRPSC
President
Edmonton, Alberta
March 23, 2002

permettre aux membres de verser un don à la Société à partir de janvier 2002. Nous avons reçu à ce jour, grâce à cette initiative, 40 \$ US et 70 \$ can.

Bien qu'il ne s'agisse pas d'un bénéfice financier direct à la Société, j'aimerais remercier Ron Brigham qui a proposé d'offrir à long terme le Grand Prix de Réserve pour la partie «exposition» de nos congrès. Ce don généreux a déjà profité au comité organisateur du congrès à Edmonton et profitera aux prochains comités organisateurs puisqu'il permet d'importantes économies au budget.

8. RÉGÉNÉRATION DE LA SOCIÉTÉ

Le Conseil continue à se pencher sur les changements possibles dans le cadre de la structure et des pratiques de La SRPC tout en simplifiant les opérations de la Société. Le Conseil espère être en mesure de présenter aux membres les changements proposés avant notre prochaine assemblée générale annuelle de l'an prochain à Hanover (Ontario).

9. MEMBRES

Le taux d'adhésion trop faible continue d'être un problème majeur pour la Société. Bien que nous ayons enregistré une hausse de 17,3 % parmi nos nouveaux membres (129 par rapport à 110), le nombre général de nos adhérents a chuté de 3,7 % (2 683 par rapport à 2 779). Le nombre de nouveaux membres que nous avions projeté aurait pu être bien supérieur. Nous devons quelques-unes des nouvelles inscriptions et des demandes d'adhésions à deux initiatives lancées en 2001 : les abonnements cadeaux et les annonces publicitaires «d'assurance» parues dans des publications philatéliques. Par ailleurs, nous ne sommes pas encore en mesure d'annoncer le nombre de nouveaux membres qui ont rejoint nos rangs par le biais des ventes en kiosque de notre magazine. Je ne puis que suggérer de poursuivre nos initiatives économiques et de voir si nous pouvons augmenter le nombre des membres. À ce sujet, j'ai demandé à Frank Alusio, l'un des administrateurs de la Société, de penser à une proposition de recruter des membres retraités ou bientôt retraités. M. Alusio a présenté une proposition qui a été examinée par le Conseil, et on lui a demandé d'approfondir sa proposition de façon à savoir si certains de ses éléments pouvaient être traités conjointement par La SRPC et Canada Postes.

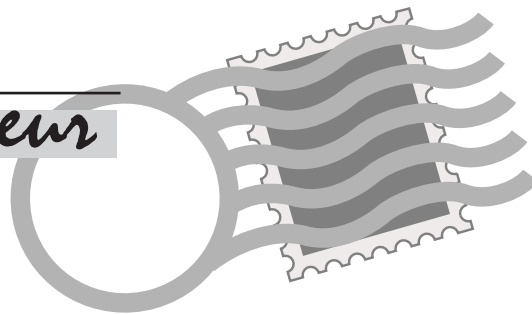
10. CONCLUSION

Je suis enchanté des réalisations de la Société et du Conseil au cours de l'année qui vient de s'écouler. Je me réjouis moins de la non-augmentation du nombre de nos membres et je m'engage une fois encore à faire de ce problème ma première priorité pour l'an prochain et les années à venir. J'aimerais finalement remercier Alan Meech et son équipe de l'excellente organisation du Congrès-Exposition auquel nous participons et j'invite chacun d'entre vous à nous rejoindre lors du 75e congrès à Hanover (Ontario) l'an prochain.

Charles J.G. Verge, FRPSC
Président
Edmonton, Alberta
23 mars 2002

Letters / Lettres

Dear Editor / Cher rédacteur

**Dear Editor:**

I just thought you would like to know that the new issue of *The Canadian Philatelist* arrived yesterday. Once again, you did a fine job. The article on the ROYAL * 2002 * ROYALE was interesting. I have a suggestion for a possible series. There seems to be quite an interest in exhibiting these days and I noticed correspondence in the current issue discussing the subject. Why not ask the winners of the Grand Awards at Royal/Royale from the past three to five years to submit colour photocopies of two or three pages from their exhibits along with a short text discussing how they write up their exhibits? It might also stimulate interest in attending the annual conventions to some extent.

Talking (writing!) about exhibits, I sent an e-mail to the Hanover 2003 Convention committee indicating I would like to submit an exhibit for the show next year. I received a nice reply and the respondent indicated that there are problems bringing exhibits back and forth across the border of our two countries. They are apparently having someone in Rochester serve as the U.S. representative for bringing exhibits into Canada. I think I will probably skip exhibiting but I will still attend the show.

**Best wishes,
Kimber Wald**

By all means, exhibitors, send in your comments. And this invitation is NOT restricted to just Grand Award winners.

Editor.

Dear Editor:

Dr. John Milks' article in the recent issue of this publication is the fourth professional opinion by a chemist regarding the "Muddy Water" variety of Canada's first Christmas stamp – also referred to in more recent times as the "Map" stamp. Milks also confirms the fact that the "Muddy Water" is a "changeling" due to oxidation (sulphuretted) rather than a colour printing variety. Other professional chemists (Marie-Claude Corbeil, Len Kruczynski, and Francis Au) having similarly confirmed that and other information although the details in each instance vary slightly.

All four chemists seem to agree with previously published information that the change resulted from exposure to sulphur in the atmosphere and that restoration may not be possible in every case. The chemical "why" seems to have been answered. None of the opinions adequately explain what special circumstances existed causing the chemical reaction to take place and why some stamps have changed colour while others still retain their original colour.

Readers are advised that research is being conducted in different parts of the world by a small group of collectors. They are attempting to prove the theory that the change in stamp colours resulted from disinfection methods used to halt the spread of small pox.

Approximately 100 years ago, mail was disinfected by burning sulphur in closed containers and sealed mail cars within North

America. Attempts are being made to match town / date cancels on affected covers with recorded small pox outbreaks. The difficulty lies in locating the appropriate records. Conclusive evidence exists in isolated cases. The research process is yet incomplete. Mail disinfection has been a common practice over several centuries in different parts of the world. The most recent example of this process took place during the anthrax threat following the Sept. 11 attacks on New York City and Washington, DC.

Sulphur was also burned in homes where people were infected with small pox. This practice would help to explain why mint and other used stamps were discoloured. If covers existed in the home, one cannot be sure whether the cover was disinfected during the mail process or while it was stored in the home.

There is no doubt that the "Muddy Water" variety is an oxidized stamp. But is it an example of disinfected mail? A more complete answer to that question is still open to research and discussion.

**Sincerely,
Bill Pekonen**

Dear Editor:

Just read *The Canadian Philatelist* March/April 2002 Vol. 53 No. 2 and it is well presented. I noticed and read the article 'General Balbo's Flying Armada' by James Gray on page 64.

The cover caught my eye and as well the first two lines in the article. You will notice that this cancelled cover does not agree with but challenges the date stated in the article. I thought that your readers would be interested in the story of this particular exciting cover.

As you, the editor, state in your 'One Last Word' same issue "...we have on occasion printed previously published material..." then may I suggest that the article where this cover originally appeared be reprinted in your journal *The Canadian Philatelist* for the story it contains.

It is found in *BNA Topics* Jan-Feb-Mar 1997, Vol. 54 No. 1 pages 30-37 entitled 'Finally – Its Discovery in 1997, the 1933 Newfoundland Balbo Airmail First Day Cover.'

Presuming not to be considered bold for this suggestion, I remain.

**Yours in philately,
John M. Walsh
St. John's Nfld.**

Thank you for drawing our attention to your cited article in BNA Topics.

Editor.

Coming Events / Calendrier

To have your event listed in this section of *The Canadian Philatelist*, please send all details to The RPSC National Office, P.O. Box 929, Station Q, Toronto, ON M4T 2P1. Details may be faxed to (416) 979-1144 or e-mail to info@rpsc.org. Information will not be accepted by telephone. **THIS IS A FREE SERVICE OF THE RPSC.**

Pour que votre événement soit listé dans cette section du *Philatéliste canadien* veuillez envoyer tous les détails au Bureau national de la SRPC, C.P. 929, Succ. 'Q', Toronto, ON M4T 2P1. Les détails peuvent être faxés au (416) 979-1144 ou par poste-électronique à info@rpsc.org. Aucune information ne sera acceptée par téléphone. **CECI EST UN SERVICE GRATUIT DE LA SRPC.**

LOCAL EVENTS / ÉVÉNEMENTS LOCAUX

The following is a list of dates for upcoming Stamp Shows in Southwestern and Central Ontario. More information will follow in upcoming issues.

Voici la liste des dates des prochaines expositions philatéliques dans le sud-ouest de l'Ontario. De plus amples détails figureront dans de prochains numéros.

- Aug. 10, 2002:** Fenelon Falls, ON
- Aug. 17, 2002:** Collingwood Stamp and Coin Show
- Sept. 21, 2002:** Cobourg, ON
- Sept. 28, 2002:** Milton, ON
- Sept. 29, 2002:** GRVPA Stamp Fair, Cambridge
- Oct. 5, 2002:** GRVPA Stamp Fair (2002+)
- Oct. 12, 2002:** Guelph
- Oct. 12, 2002:** Kincardine
- Oct. 12, 2002:** Bracebridge
- Oct. 19, 2002:** Kingston
- Oct. 19, 2002:** Barrie
- Oct. 19, 2002:** Essex County Stamp Club Show
- Oct. 26, 2002:** London Middlesex
- Oct. 26, 2002:** Brantford
- Nov. 2, 2002:** Chatham
- Nov. 2, 2002:** Hamilton
- Nov. 2, 2002:** North Toronto
- Nov. 2, 2002:** Trenton
- Nov. 3, 2002:** Strathroy
- Nov. 9, 2002:** Cambridge
- April 12, 2003:** Kitchener-Waterloo

REGIONAL EVENTS / ÉVÉNEMENTS RÉGIONAUX

Aug. 10, 2002: Fenelon Stamp Club will hold FENPEX 18 at the Fenelon Falls United Church, 123 Colborne St. in Fenelon, ON. Hours: 10 a.m. to 4 p.m. Dealers, exhibits, prizes, Free admission. Lots of parking. Contact Margaret Allen at (705) 887-5386.

Sept. 14, 2002: MUSPEX 2002 will be held at the Muskoka Riverside Inn, Ecclestone Dr. in Bracebridge, ON. Hours: 10 a.m. to 5 p.m. Dealers in attendance, display of Muskoka Postal History. Free parking.

Sept. 21, 2002: North Toronto Stamp club 2002 Stamp Show and Bourse will be held at the Civic Garden Centre, Edwards Gardens, 777 Lawrence Ave. E. at Lesley St., Don Mills, ON.

Free parking and admission. Wheelchair access. Hours: 9 a.m. to 5 p.m. Contact Herb at (416) 445-7720, fax (416) 444-1273, or e-mail ntstampclub@yahoo.ca.

Nov. 2, 2002: North Toronto Stamp club 2002 Stamp Show and Bourse will be held at the Civic Garden Centre, Edwards Gardens, 777 Lawrence Ave. E. at Lesley St., Don Mills, ON. Free parking and admission. Wheelchair access. Hours: 9 a.m. to 5 p.m. Contact Herb at (416) 445-7720, fax (416) 444-1273, or e-mail ntstampclub@yahoo.ca.

March 22-23, 2003: North Toronto Stamp Club Show and Bourse will be held at the Civic Garden Centre, Edwards Gardens, 777 Lawrence Ave. E. at Lesley St. in Don Mills, ON. Free parking and admission. Wheelchair access. Hours: 10 a.m. to 5 p.m. Saturday and 10 a.m. to 4 p.m. Sunday. Contact Herb at (416) 445-7720.

NATIONAL EXHIBITIONS / EXPOSITIONS NATIONALES

Aug. 15-18, 2002: STAMPSHOW 2002 in Atlantic City, NJ.

Sept. 20-22, 2002: PIPEX 2002, sponsored by the Northwest Federation of Stamp Clubs (in this case also hosted by the NWFSC), a joint Royal Philatelic Society of Canada / American Philatelic Society national-level show, will be held at the Convention Centre, Best Western Richmond Inn, Richmond, BC. Contact Chairman Gray Scrimgeour, #570-188 Douglas St., Victoria, BC V8V 2P1, or e-mail gray@scrimgeour.ca.

Sept. 26-29, 2002: BNAPEX 2002, the annual convention/exhibition of The British North America Philatelic Society, will be hosted by the Inland Empire Philatelic Society at the Spokane Convention Center. Competitive member exhibits, dealer bourse, seminars, local tours, and social activities. Contact J.D. Arn at N 17708 Saddle Hill Rd., Colbert, WA 99005 USA, call (509) 467-5521, or e-mail johndarn@aol.com. Also view the Society Web site at www.bnaps.org.

Feb. 23-March 2, 2003: AmeriStamp Expo 2003 in Biloxi, Mississippi.

ROYAL * ROYALE: The Royal Philatelic Society of Canada's annual exhibition and convention. Dates and locations for upcoming years:

- May 30-June 1, 2003 in Hanover, Ontario;
- May 28-30, 2004 in Halifax, Nova Scotia;
- May 27-29, 2005 in London, Ontario;
- June 20-25, 2006 in St. John's, Newfoundland.

INTERNATIONAL EXHIBITIONS / EXPOSITIONS INTERNATIONALES

Aug. 2-11, 2002: PHILAKOREA 2002 World Stamp Exhibition will be held in Seoul, Republic of Korea. The Canadian Commissioner is Charles J.G. Verge, e-mail verge@sympatico.ca. (Entries closed.)

Nov. 16-23, 2002: Exposicion Filatélica España 2002, The World Youth Philatelic Exhibition, has been changed. The show will now be held in Salamanca on Nov. 16-23. ♣

Chapter Meetings/Réunions des clubs membres

AJAX PHILATELIC SOCIETY

RPSC Chapter 163 meets the 2nd and 4th Thurs, Sept. to June at the Ajax Public Library, 65 Harwood Ave. S., 6-9 p.m. Contact: Richard Weigand, 6 Carter Cr., Whitby, ON L1N 6C4. (905) 430-2637. E-mail: richard.weigand@sympatico.ca.

AMICALE DES PHILATÉLISTES DE L'OUTAOUAIS (APO)

Les membres de l'APO, chapitre 190 de la SRPC, se réunissent tous les jeudis de début septembre à fin avril, de 18h30 à 21h00. Les réunions ont lieu au Châlet Fontaine, 120 rue Charlevoix à Hull (Québec). Carte de membre 20 \$ (10\$ pour les moins de 16 ans). Vendeurs, encans, exposition.

Members of the APO (Chapter #190) meet every Thurs. from Sept. to the end of April, 6:30 to 9 p.m. in the Châlet Fontaine, 120 Charlevoix, Hull, Québec. Membership \$20 (\$10 under 16). Dealers, auctions, show and bourse. Contact: A. Bossard, 5-1160 Shillington, Ottawa, ON K1Z 7Z4; (613) 722-7279; e-mail: isabelle.alain@sympatico.ca

CLUB PHILATÉLIQUE "LES TIMBRÉS" DE BOISBRIAND

Section adulte: Tous les lundis soir de 19h. à 21h. Section junior: Tous les samedis de 9h. à 11h; au Centre socio-culturel de Boisbriand, 480 rue Chavigny, Broisbriand, QC, J7G 2J7; information: Louis-Georges Dumais (450) 979-7371; Jacques Charbonneau (450) 430-6460.

BARRIE DISTRICT STAMP CLUB

Chapter 73 meets the 2nd Wed. except July and Aug. at 7:30 pm at Parkview Centre, 189 Blake St., Barrie. Table auction at every meeting. Contact: Marjorie Coakwell, PO Box 2, Orillia, ON L3V 6H9.

BRAMALEA STAMP CLUB

RPSC Chapter 144 meets the 1st Sun. Oct. to June 2-4 p.m. and the 3rd Tues. year round 7:30-9:30 p.m. at Terry Miller Recreation Complex, Williams Parkway between Dixie Rd. and Bramalea Rd.) Brampton, ON. Contact: Bramalea Stamp Club, Box 92531, Bramalea, ON L6W 4R1.

BRANTFORD STAMP CLUB

RPSC Chapter 1 meets on the 1st and 3rd Tues. Sept. to May, and the 1st Tues. in June, at the Woodman Community Centre, 491 Grey St. ON at 7 p.m., short business meeting at 8 p.m., followed by a program. Circuit books, five dealers. Contact: Secretary, Box 25003, 119 Colborne St. W., Brantford, ON N3T 6K5; (519) 753-9425

BRITISH COLUMBIA PHILATELIC SOCIETY

Meets every Wed., Sept. to June, at 7:30 p.m. in the Amenity Room, Grosvenor

Building, 1040 W. Georgia St. Contact: B.C.P.S., 2955 West 38th Ave., Vancouver, BC V6N 2X2.

BROCK/PRESCOTT STAMP CLUB

Meets the 3rd Wed. Sept. to May at 7 p.m. at Wall Street United Church, 5 Wall St., Brockville, ON. Contact Roy Brooks at (613) 342-7569.

CALGARY PHILATELIC SOCIETY

(Chapter 66) Regular meeting: 1st Wed. except July and Aug., 7 p.m. Auctions on 3rd Wed. of month except Dec., 7:30 p.m. Kerby Centre, 1133 7 Ave. SW. Contact: Calgary Philatelic Society, PO Box 1478, Station M, Calgary, AB T2P 2L6.

CAMBRIDGE STAMP CLUB

Meets the 3rd Mon.Sept. to June at 7 p.m. Short meeting at 8 p.m. at Allen Bradley Cafeteria, Dundas Street, Cambridge, ON. Two dealers, club circuit. Contact: Charlie Hollett, (519) 740-6657, 3-10 Isherwood Ave., Cambridge, ON N1R 8L5.

CANADIAN AEROPHILATELIC SOCIETY

RPSC Chapter 187, yearly membership for Canadians \$20 Cdn, for Americans \$22 Cdn. and for all other countries \$25. No formal meetings, but members join the RA Stamp Club meetings at the RA Centre, 2451 Riverside Dr., Ottawa, ON at 7:30 p.m. every Mon. except June to Aug. Contact: Ron Miyanishi, 124 Gamble Ave., Toronto, ON M4J 2P3. (416) 421-5846

CANADIAN ASSOCIATION FOR ISRAEL PHILATELY

Chapter 76, Jan Bart Judaica Study Group, meets on the 2nd Wed. except July and Aug., 7 p.m., at Lipa Green Bldg., 4600 Bathurst St., Willowdale, ON. Contact: Joseph Berkovits, 33-260 Adelaide St. E., Toronto, ON M5A 1N1. (416) 635-1749.

CANADIAN FORCES PHILATELIC SOCIETY

Meets the 1st and 3rd Wed. Sept. to May 8-9:30 p.m. Dempsey Community Centre, Ottawa, ON. Hendrick Burgers, (613) 737-2993.

CANADIAN FORCES BASE TRENTON STAMP CLUB

Chapter 89 meeting on the 1st and 3rd Wed. Sept. to June at the Trenton Seniors' Club (Club 105) at the corner of Bay and Campbell Streets at 6:45 p.m. Contact: G.A. Barsi at (613) 394-2024, M. Leedham at (613) 392-7462 or S. Taylor at (613) 393-4316.

COBOURG STAMP CLUB

Chapter 106 meets the 2nd and 4th Wed. of each month at 7 p.m. in the Salvation Army Citadel, 59 Ballantine St. Trading / selling, speakers, competitions / challenges, presentations, and annual exhibition and sale in Sept. Contact: D. Hosking at (905) 885-2104 or e-mail dorahrh@eagle.ca.

COLBORNE STAMP CLUB

Chapter 205 meets on the 2nd and 4th Tues. Sept. to May at 7 p.m. in the Seniors' Drop-In, Vourneen "Buff" Jack Memorial Centre, 14 Victoria Square. Contact: Box 1073, Colborne, ON K0K 1S0.

CREDIT VALLEY PHILATELIC SOCIETY - MISSISSAUGA

Chapter 67 of The RPSC meets on the 1st and 3rd Wed. at 7 p.m. in the Texaco Room of the Port Credit Branch of the Mississauga Library, located in the southwest corner of the public parking lot west of Stevebank and north of Lakeshore Road. Contact Bob Laker (905) 608-9794.

DELTA STAMP CLUB

Club meetings on the 2nd and 4th Tues. Sept. to May at 7:30 p.m. at the Phoenix Club, 6062-16th Ave., Tsawwassen, BC. Contact Keith Meyer, President, #7-1100-56th St., Delta, BC V4L 2N2.

EAST TORONTO STAMP CLUB

Chapter 12 meets the 1st and 3rd Wed., except June to Aug., at Stan Wadlow Clubhouse, Cedarvale Ave. Contact: Sec. Raymond Reakes, 188 Woodmount Ave., Toronto, ON M4C 3Z4. (416) 425-1545.

EDMONTON STAMP CLUB

Edmonton's Chapter 6 meetings held every other Mon., Sept. to June at 7 p.m., at St. Joseph High School cafeteria (use north entrance), 10830-109 St. Contact: Box 399, Edmonton, AB, T5J 2J6. Keith Spencer (780) 437-1787 or e-mail ameech@telusplanet.net.

ESSEX COUNTY STAMP CLUB

Chapter 154 meets on the 2nd and 4th Wed. at the Glenwood Church, 1825 Grand Marais West, Windsor, ON Meeting starts at 7 p.m., program at 8 p.m. Contact: President David L. Newman, 1165 Wigle Ave., Windsor, ON N9C 3M9, (519) 977-5967, or e-mail lacumo@cogeco.ca.

FENELON STAMP CLUB

Chapter 176 meets the 2nd Mon. in the Fenelon Falls Community Hall behind the Village Office on Market St. at 7:30 p.m. Contact: President: Margaret Allen, R.R. 1, Fenelon Falls, ON K0M 1N0.

FRASER VALLEY PHILATELIC CLUB

Meets at 7 p.m. on the 3rd Monday, except holidays, at Abbotsford Senior Secondary School, 2329 Crescent Way. Contact N. Holden at (604) 859-9103.

FREDERICTON DISTRICT STAMP CLUB

Chapter 148 meets the 1st and 3rd Tues. Sept. to May at 7:30 p.m. at the Hugh John Fleming Forestry Centre, 1350 Regent St. Contact Ron Smith, 12 Chateau Dr., McLeod Hill, NB, E3A 5X2, (506) 453-1792, or e-mail: rugbyron@nb.sympatico.ca

FUNDY STAMP COLLECTOR'S CLUB

Meets the 1st Thurs., except July and Aug., at 7 p.m. at the YMCA on Highfield St. Contact H.C. Terris at (506) 856-8513 or PO Box 302, Moncton, NB E1C 8L4.

GREATER VICTORIA PHILATELIC SOCIETY

Chapter 32 meets on the 3rd Fri. at 7:30 p.m. at the Windsor Park Pavilion in Oak Bay. Circuit books, auction and special programs prevail. Contact Don Dundee, 928 Claremont Ave., Victoria, BC V8Y 1K3, (604) 658-8458.

HAMILTON STAMP CLUB

Chapter 51 meets at 6 p.m. on the 2nd, 4th and 5th Mon., Sept. to June except holidays, and 2nd Mon. of July, at Bishop Ryan secondary school, Quigley Rd. and Albright St. Contact: Clare Maitland (Secretary), Box 60510, 673 Upper James St., Hamilton, ON, L9C 7N7; e-mail: stamps@hwcen.org or on-line at: www.hwcen.org/~ip029

INSURANCE AND BANKING PHILATELIC SOCIETY

Meets the 3rd Thur. Sept. to June at 6 p.m. on eighth floor, 200 King St. W., Toronto, ON M5H 2Y2. Contact: Herb Kucera, secretary, (416) 494-1428, or e-mail herbkucera@rogers.com.

KAWARTHA PHILATELIC SOCIETY

Chapter 58 meets on the 2nd and 4th Tues. except July and Aug., at 7 p.m. at Riverview Manor, 1155 Water St. N. Peterborough, ON. Contact Marie Olver at (705) 745-4993.

KELOWNA & DISTRICT STAMP CLUB

Chapter 90 meets on the 2nd Wed. Sept. to June at 7 p.m., Dr. Knox Middle School Cafeteria, 1555 Burch Ave. Contact: Box 1185, Kelowna, BC V1Y 7P8.

KENT COUNTY STAMP CLUB

Chapter 7 meets 4th Wed. except July, Aug. and Dec. in the library of John McGregor Secondary School, 300 Cecile, Chatham, ON, at 7:30 p.m. Contact: Secretary, Allan Burk, 43 Sudbury Dr., Chatham, ON N7L 2K1.

KINCARDINE STAMP CLUB

Chapter C-196 meets the 1st Wed. in the back of the Anglican Church on Russel St. at 7:30. Contact the club at Box 192, Kincardine, ON N2Z 2Y7 or call John Cortan at (519) 395-5819 or e-mail jcor-tan@hurontel.on.ca

KINGSTON STAMP CLUB

Meets 7-9 p.m. on the 2nd and 4th Mon. Sept. to May at the Ongwanada Resource Centre, 191 Portsmouth Ave. Free parking and wheelchair access. Consignment table, auctions, bourse, OXFAM, and trading. Contact President S. Elphick, 905 Ambleside Cres., Kingston, ON K7P 2B2 (613) 389-7030, elphicks@home.com

**KITCHENER-WATERLOO
PHILATELIC SOCIETY**

Chapter 13 meets the 2nd Thurs. Sept. to June at Albert McCormick Arena, Parkside Dr., Waterloo. Contact: Betty J. Martin, P.O. Box 43007, Eastwood Square PO, Kitchener, ON N2H 6S9, (519) 578-7782.

LAKEHEAD STAMP CLUB

Chapter 33 meets the 2nd Wed. and last Fri. Sept. to June at the Herb Carroll Centre, 1100 Lincoln St., Thunder Bay, ON. at 7:30 p.m. Contact: Secretary D. Lein, 232 Dease St., Thunder Bay, ON P7C 2H8.

**LAKESHORE STAMP CLUB –
CLUB PHILATÉLIQUE DE
LAKESHORE**

Chapter 84 meets at Dorval Strathmore United Church, 310 Brookhaven Ave., Dorval, QC, on the 2nd and 4th Thurs. Sept. to June at 7:30 p.m. Contact: Oleg Podymow, President, P.O. Box 1, Pointe Claire/Dorval, QC H9R 4N5. / Le chapitre 84, se réunit tous les jeudis de début septembre à fin juin, à 19h30. Les réunions ont lieu au Dorval Strathmore United Church, 310 ave. Brookhaven, Dorval, QC. Information: Oleg Podymow, Président, P.O. Box 1, Pointe Claire/Dorval, QC H9R 4N5.

**LETHBRIDGE
PHILATELIC SOCIETY**

Chapter 57 meets on the 2nd Thur. at 7 p.m. except June to Aug. at the Canadian Western Natural Gas Co. building at 410 Stafford Dr. N., Lethbridge, AB T1H 2A9.

**MEDICINE HAT
COIN & STAMP CLUB**

Chapter 146 meets the 2nd and 4th Tues. at 7:30 p.m. in the Dot Wilkinson Room (SW door) of Westminster United Church, 101 6th Street SE. Contact: Manfred Sievert, 18 Cochran Dr. NW, Medicine Hat, AB T1A 6Y7.

MIDDLESEX STAMP CLUB

Chapter 204 meets every other Fri. Sept. to May, at 7 p.m. in the basement of St. Martin's Church, 46 Cathcart St., London. Meeting at 8 p.m. Contact Patrick Delmore at (519) 675-0779.

MILTON STAMP CLUB

Chapter 180 meets on the last Mon., except Dec. at 7 p.m. at Hugh Foster Hall (beside Town Hall) in Milton, ON. Silent auction every meeting. Contact: Milton Stamp Club, 425 Valleyview Cres., Milton, ON L9T 3K9; (905) 878-1533 or (905) 878-9076, or e-mail: alman@globalsever.net.

MUSKOKA STAMP CLUB

Meets at the Senior Centre on Dominion St. in Bracebridge, ON on the 1st and 3rd Wed. of month, except 3rd Wed. in July, Aug., and Dec. Contact Club President Tom Anderson at (705) 645-3330.

NELSON STAMP CLUB

Meets on the 3rd Thurs. except Dec. at 7 p.m. at #105-402 W. Beasley, Nelson, BC V1L 5Y4.

**NORTH BAY & DISTRICT
STAMP CLUB**

Chapter 44 meets on the 2nd and 4th Tues. Sept. to May, at the Casselholme Home for the Aged, 400 Olive St., North Bay, ON at 7 p.m. (Basement meeting

room.) Table auction and sales circuit. Contact: John Fretwell, R.R. 1, Callandar, ON P0H 1H0, (705) 752-1364.

**NORTH TORONTO
STAMP CLUB**

Meets 2nd and 4th Thurs. except July and Aug. 7 p.m. at the Yorkminster Park Baptist Church, 1585 Yonge St., Toronto. Sales circuit, auctions, speakers. Contact: Ben Marier, (416) 492-9311.

**NORTH YORK
PHILATELIC SOCIETY**

Chapter 21 meets the 1st and 3rd Wed. except July and Aug. when meetings are held on only the 3rd Wed., at 6:30 p.m. in the lounge of the Centennial Arena, north side of Finch Ave. W., west of Bathurst. Sales circuit, auctions, speakers, lectures. Contact: Joe Malboeuf at (905) 884-5503.

NOVA SCOTIA STAMP CLUB

The 1st affiliate of the RPSC, est. 1922, meets the 2nd Tues. Sept. to June at the Nova Scotia Museum. Contact: E. Sodero, 831 Tower Rd., Halifax, NS B3H 2Y1.

OAKVILLE STAMP CLUB

Chapter 135 meets the 2nd and 4th Tues. at 7 p.m. in the cafeteria, St. Thomas Aquinas Secondary School, 124 Margaret Dr. Contact: Oakville Stamp Club, Box 69643, Oakville, ON L6J 7R4.

**OTTAWA PHILATELIC
SOCIETY**

Chapter 16 meets every Thurs. at 7:45 p.m. Sept. to May at the Hintonburg Community Centre, 1064 Wellington St., Ottawa. Contact OPS Merivale P.O. Box 65085, Nepean, ON K2G 5Y3.

OWEN SOUND STAMP CLUB

Chapter 191 meets the 3rd Wed. at 7 p.m. at St. George's Anglican Church, 149 4th Ave. E. Trading, auctions, circuit books. Contact Robert J. Ford, 721 8th Ave. E., Owen Sound, ON N4K 3A4.

**OXFORD PHILATELIC
SOCIETY**

Chapter 65 meets 1st and 3rd Thurs. Sept. to May, at Knights of Columbus Hall, behind St. Rita's Catholic Church (Dundas St. E.) Woodstock, ON. Trading and junior program at 7 p.m., regular meeting at 7:30 p.m. Speakers, mini auctions, prizes, contests, dealers. Contact: Gib Stephens, P.O. Box 20113, Woodstock, ON N4S 8X8.

**PENTICTON AND DISTRICT
STAMP CLUB**

Chapter 127 meets the 1st Sun. 2-4 p.m. at the Okanagan University College Training Centre, 106 Warren Av. E. Contact: E.M. Proctor (Secretary), RR#4 S87 C9, Summerland, BC V0H 1Z0. (250) 494-4055.

PERTH STAMP CLUB

Meets the 2nd and 4th Wed. Sept. to June, 7:30 p.m. in McMartin House, Gore Street. Contact Gus Quattrocchi (A.J.), 69 Harvey St., Perth, ON K7H 1X1.

R.A. STAMP CLUB – OTTAWA

Chapter 41 meets every Mon., except June to Aug. at 7:30 p.m. at the R.A. Centre, 2451 Riverside Dr., Ottawa, ON K1H 7X7. Contact: (613) 733-5100.

REGINA PHILATELIC CLUB

Chapter 10 meets the 1st and 3rd Wed., Sept. to May, 7-10 p.m. at Sheldon-Williams Collegiate Library, 2601 Coronation St., Contact: Box 1891, Regina, SK S4P 3E1.

ROYAL CITY STAMP CLUB

Chapter 104 meets on the 2nd Thurs. except July and Aug., 7 p.m. at the New Westminster Public Library, 716-6th Ave., New Westminster, BC. Contact: Box 145, Milner, BC V0X 1T0. (604) 534-1884.

SAINT JOHN STAMP CLUB

Meets the 4th Wed. except July and Aug., 7 p.m. at the Saint John High School, Canterbury Street, Saint John, NB. Contact: James Young, Sec.-Treas., 2278 Rothesay Rd., Rothesay, NB E2H 2K5.

ST. CATHARINES STAMP CLUB

Meets on the 1st and 3rd Tues. Sept. to June at Holy Cross secondary, St. Catharines, ON. Contact: Stuart Keeley, 15 Baxter Cres., Thorold, ON L2V 4S1, (905) 227-9251, stuart.keeley@sympatico.ca

**ST. JOHN'S PHILATELIC
SOCIETY**

Meets 2nd and 4th Wed., except July and Aug. at 8 p.m. at Marine Institute. Contact: J. Don Wilson, 11 Elm Place, St. John's, NFA 1B 2S4, (709) 726-2741.

SASKATOON STAMP CLUB

Chapter 80 meets the 2nd and 4th Mon. Sept. to May, 7-9 p.m. at the Saskatoon Field House, 2020 College Dr., Saskatoon, SK. Contact: secretary: Doug Smith, (306) 249-3092; e-mail: ae245@sfn.saskatoon.sk.ca.

SCARBOROUGH STAMP CLUB

Chapter 223 meets the 1st and 3rd Tues. Sept. to June at 7 p.m. at Cedarbrook Community Centre, Contact Peter Butler, 143 Glenmore Rd., Toronto, ON M4L 3M2.

**SIDNEY STAMP CLUB
(SIDNEY, BC)**

The Sidney Stamp Club meets the 2nd Sat. except July and Aug., at the Sidney Regional Library, Nell Horth Room, at 2 p.m. Sales circuit, presentations, and auctions. Contact: (250) 479-6513.

**LA SOCIÉTÉ PHILATÉLIQUE DE
QUÉBEC**

La S.P.Q. tient ses réunions régulières les premiers et troisièmes mercredis du mois au sous-sol de l'église St-Rodrigue, 4760 1ère avenue, porte no 10, Charlesbourg. Les réunions ont lieu de 19h à 22h. Information, écrire à: S.P.Q., C.P. 2023, Québec, QC G1K 7M9

**LA SOCIÉTÉ PHILATÉLIQUE
DE LA RIVE SUD**

Société membre No. 19. Réunions régulières tenues les 2e et 4e lundis débutant en septembre pour se terminer le 2e lundi de juin. De 19h30 à 21h00. Centre culturel, 100 ouest, rue St-Laurent, Longueuil, QC. Secrétaire Bernard Dansereau.

SAUGEEEN STAMP CLUB

Meets on the 1st Tues. at the Hanover Library Complex, 451 10th Ave., Hanover, ON. Contact: PO Box 11, Clifford ON, N0G 1M0. E-mail pkritz@logon.ca, Club President Peter Kritz, RR3, Hanover, ON

N4N 3B9, Club Secretary Jim Measures, PO Box 11, Clifford, ON N0G 1M0. Annual Exhibition and show May 5, 2001. (519) 327-8265 or (519) 364-4752.

STRATFORD STAMP CLUB

Chapter 92 meets on the 4th Thurs. Sept. to June, except Dec. when it meets on the 3rd Thurs. 7 p.m. at the Kiwanis Community Centre, Lakeside Dr. Stratford. Juniors meet at 7 p.m., regular meetings at 8 p.m. Contact: Stratford Stamp Club, 273-356 Ontario St., Stratford, ON N5A 7X6.

SUDBURY STAMP CLUB

Chapter 85 meets the 2nd Tues. Sept. to June, in the St. Raphael School library, 109 Dublin St., at 7:30 p.m. Slide shows, presentations and auctions. Contact: Richard Vincer, Box 2211, Stn. A, Sudbury, ON P3A 4S1; (705) 983-1932.

**THE PHILATELIC CLUB
OF MONTRAL**

Chapter 122 meets on the 3rd Thurs. at 7:30 p.m. at Le Manoir, 5319 Notre Dame de Grace. Contact: Lloyd Slaven, 1079 Emerson Cres., Chomedey, QC, H7W 1H6; e-mail: lslaven@macten.net.

**TORONTO HARMONIE
STAMP CLUB**

Chapter 94 meets the 1st Mon. Jan. to May and Sept. to Nov. at 1460 Bayview Ave., in the apartment building meeting room at 7:30 pm. Contact J.G. Doehler (416) 438-4862.

TRURO PHILATELISTIC SOCIETY

Meets the 2nd Thurs. Sept. to June at 7:30 p.m. at the Sobey's community room, Prince St., for a general meeting followed by a program and auction. Fourth Thurs is trading night.

**UNION des PHILATÉLISTES
de MONTRÉAL**

La chapitre no 3 de la Royale se réunit tous les 2e et 4e mardis, de septembre à mai, à 19h, au Centre Saint-Mathieu, 7110, 8e avenue (près Jean-Talon, métro St-Michel). Pour information: UPM, 7110, 8e avenue, Montréal, QC H2A 3C4.

**VANCOUVER ISLAND
PHILATELIC SOCIETY**

Chapter 52, meets at 7:30 p.m. on the 4th Thurs. at St. Aidan's Church Hall, 3707 St. Aidan's St., Victoria, BC. Contact R. Clarke, Sec., Vancouver Island Philatelic Society, P.O. Box 6351, Postal Station 'C', Victoria, BC V8P 5M3.

WEST TORONTO STAMP CLUB

Chapter 14 meets 2nd, 3rd and 4th Tues. except July and Aug., 7:30 p.m. at Fairfield Seniors' Centre, 80 Lothian Ave., Etobicoke, Auctions, dealers, speakers, study group, annual exhibition. Contact: 331 Rathburn Rd., Etobicoke, ON M9B 2L9. Frank Alusio, (416) 621-8232.

**WINNIPEG PHILATELIC
SOCIETY**

Meets at 7 p.m. on the 1st and 3rd Thurs. except July and Aug. Deaf Centre of Manitoba, Meeting Room, 285 Pembina Hwy. Contact: Rick Penko, 3793 Vialoux Dr., Winnipeg, MB R3R 0A5, e-mail rpenko@escape.ca. ♣

SELL QUALITY SELLS

ROYAL PHILATELIC SOCIETY OF CANADA SALES CIRCUITS

Most Requested Sales Circuit Books:

- Canada - early, mint & used
- very modern, u
- postal stationery, booklets & panes, plate blocks, pre-1950

Provinces

United States

Br. Commonwealth - early used, modern m & u

George VI, all

France

Germany

Japan

Scandinavia

COUNTRIES IN DEMAND

BWI all areas

British Offices Abroad

Cayman Is.,

Ceylon

Dominica

Eastern Europe

Egypt

Falkland Is.

Gambia

Gibraltar

Grenada

Guyana

Leeward Is.

Montserrat

New Zealand

Rhodesias

The "Saints" (Lucia,

Vincent, Kitts)

Saint Pierre & Miquelon

Seychelles

Turks & Caicos

TOPICS IN DEMAND

Minerals, Birds, ships etc

See us at the shows

Edmonton - Sept. 14-15,
Edmonton Stamp Club Fall
Market. Europa Blvd.,
West Edmonton Mall

Vancouver - Sept. 20-22,
Pipex, Richmond Inn

WANTED! Top Quality Stamps

We have a group of active buyers looking for good quality stamps.

We need to get the high quality stamps that our buyers are asking for. That means you can sell your quality stamps to a ready market. Send us your circuit books and we'll circulate them to our network of collectors.

Our network not only covers the map, it covers a wide range of interests as well. We currently require books from most areas of the world, and most topics!

July Special

For every book we receive during the month of July, we'll send you another book free.



Want to buy stamps at reasonable prices?

Write, phone, fax or e-mail today, for a complete information package on how to buy or how to sell through the **RPSC Sales Circuits**. RPSC members only

Independently owned and operated by: R. Dwayne **Miner**, Owner, and **Sandra E. Foss**, Circuit manager

Box 1109
Cochrane, AB T4C 1B2
Canada

Phone: (403) 932-2947
Fax: (403) 932-2947
E-mail: rpscsale@cadvision.com



Membership Reports / Rapports de membres

NEW MEMBERS / NOUVEAUX MEMBRES

The following applications were received and are herewith published in accordance with the Constitution. If no adverse reports are received within 30 days of publication, applicants will be accepted into full membership. Any objections should be sent to the National Office, P.O. Box 929, Station Q, Toronto, ON M4T 2P1.

Les demandes d'adhésion ci-dessous ont été reçues et sont publiées en conformité avec la constitution. Si aucun commentaire n'est communiqué au Bureau national, (C.P. 929, Succursale Q, Toronto, ON, M4T 2P1) d'ici 30 jours, les adhérents seront acceptés comme membres.

* requests address not be published / demande que son adresse ne soit pas publiée.

(M) minor - activity guaranteed by parent or guardian / mineur - activités philatéliques garanties par un parent ou un tuteur.

INDIVIDUAL / INDIVIDUEL

I-24558 Gordon W. Turnbull
15 - 1600 Regent Ave West
Winnipeg, MB R2C 3B5

I-26742 Rhys Bennett *

I-27392 Roland Boyd
5967 Marine Drive
West Vancouver, BC V7W 2S1
INTERESTS: British Common-
wealth (England-Canada)

I-27393 Thomas Mazza
Apt 12E 302 West 12th
New York, NY 10014 USA

I-27394 Robert D. Greenwood
E-MAIL: robert.greenwood@
dfait-maeci.gc.ca
INTERESTS: Canada, US, UN

I-27395 Eugene F. Ritz
E-MAIL: ritz0530@rogers.com
INTERESTS: Canada, BNA

I-27396 Barbara Miller
5 Tanglewood Dr, P.O. Box 145
Gales Ferry, CT 06335-0415
USA

E-MAIL: bemnnc@cs.com
INTERESTS: British Common-
wealth, History of Medicine,
Composers, Europe

I-27397 Richard Hauth
RR #2
Lakefield, ON K0L 2H0
E-MAIL: r.hauth@sympatico.ca
INTERESTS: Can, USA, GB
(Channel Is), Central Africa

I-27398 Lorraine Lowdon *

I-27399 Charles W.P. Colomb
6 Brittany
Baie D'Urfe, QC H9X 3E9

I-27400 Gordon T. Smith
c/o EDM, 2085 Maitland St.
Halifax, NS B3K 2Z8

I-27401 Trevor A. Nieforth
PO Box 3331
Pasco, WA 99302-3331 USA

I-27402 Jane E. Cruickshank *
INTERESTS: Canadian stamps
and FDC, aviation, space

I-27403 Gary Cole *

I-27404 Paul A. Miller
31710 West Chicago
Livonia, MI 48510 USA

I-27406 Eric Lepage
1305 Edouard Montpetit #112
Laval, QC H7T 1V4
E-MAIL: gravure@msn.com

I-27407 Donald R. Enman
1004 - 15 Kennedy St
Winnipeg, MB R3C 3X5
E-MAIL:
donenman@autobahn.mb.ca

I-27408 Waltraud Vossen
5 Hughes Street
Richmond Hill, ON L4E 2V9
E-MAIL: beittlberger@aol.com
INTERESTS: Canada,
Germany, USA

I-27409 William J. Kozersky
274 Saint Crispin Ave
Brea, CA 92821-4050 USA
E-MAIL: wkozersky@aol.com
INTERESTS: US, Canadian,

FDC, Christmas, Christmas
Seals

I-27410 F. David Hoeniger *

I-27411 Mary M. MacLean *

I-27412 James K. Oliver
11 Anita Drive
Newark, DE 19713-2339 USA
E-MAIL: jkoliver@together.net
INTERESTS: BNA and United
Nations

I-27413 James H. Carlin
PO Box 89
Oak Hill, NY 12460 USA

I-27414 Gordon F. Osbaldeston
1353 Corley Drive North
London, ON N6G 4L4
E-MAIL:
gordon5304@aol.com
INTERESTS: Canadian Mint
NH

I-27415 Gary Steele
6 Braemont Court
Lr. Sackville, NS B4E 3A1
E-MAIL:
gary.steele@ns.sympatico.ca

CHAPTER MEMBER

C-224 Holy Family School - Stamp
Club
334 10th Ave
Hanover, ON N4N 2N5

RESIGNED / DÉMISSIONNAIRES

Bird, Edward T. (I-26134)

Izak, Rudy P. (I-22400)

Rohrbaugh, Stephen (I-19351)

Ure, Donald A. (I-12701)

CHANGE OF ADDRESS / CHANGEMENT D'ADRESSE

Truro Philatelic Society (C-64)
c/o 167 Saywood Drive
Truro, NS B2N 6L2

K-W Philatelic Society (C-13)
26 - 121 University Ave E
Waterloo, ON N2J 4J1

Archer, David J. W. (I-25323)
342 Alberta Place
Prince Rupert, BC V8J 3X8

Byers, Ian (I-10212)
POB 45035, RPO Mid-Yonge
Toronto, ON M4P 3E3

Chirnside, Wanda M. (I-25335)
P.O. Box Box 73600, 509 St.
Clair Ave West
Toronto, ON M6C 1C0

Fuller, John (I-25664)
103 - 1976 Bee St.
Victoria, BC V8R 6P7

Harrison, Jim (I-27114)
#44, 2780 Greenwood Rd.
Nelson, BC V1L 5P4

Hauth, Richard (I-27397)
RR #2
Lakefield, ON K0L 2H0

Hussain, Ghulam Salam (I-
27184)
2606 Byfield Drive
Cedar Park, TX 78613 USA

Koenig, Peter R. (I-25976)
1005 Field Court
Cobourg, ON K9A 5M9

Martin, Peter (I-27126)
PO Box 791
State College, PA 16804-0791
USA

McGill, Stephen K. (I-26882)
10309 Brookhollow Circle
Highlands Ranch, CO 80129
USA

Neumann, Helmut E. (I-25214)
360 Petroglyph Cres
Nanaimo, BC V9R 5K1

Peters, Del D. (I-27380)
304 - 315 Berini Dr
Saskatoon, SK S7N 4M1

Roberts, Anthony F. (I-7664)
5217 Valley View Cres
Niagara Falls, ON L2E 7E5

Scott, Barry J.E. (I-26954)
P.O. Box 246
Kaikohe, Northland 0400
NEW ZEALAND

Therrien, Raymond J. (I-22588)
75 Wendover Dr #401
Hamilton, ON L9C 2S7

Wainberg, Allen S. (I-22090)
6574 Kildare Road
Cote St. Luc, QC H4W 1B5

Zielinski Clark, Nancy B. (I-20104)
PO Box 427
Marstons Mills, MA 02648 USA

Because the vast majority of our members do not attend every RPSC Convention, I thought it useful to publish my report presented to The RPSC Board of Directors at the 2002 Annual General Meeting in Edmonton. It outlines the changes, activities, and accomplishments of the past year together with the challenges that still lie ahead to make our journal the best it can be.

EDITORIAL REPORT 2001 – 2002

I am pleased to submit my first report as editor of *The Canadian Philatelist* to the Board of Directors of The Royal Philatelic Society of Canada.

That we were able to adhere to the journal's publishing schedule during the transition from the extant to your new editor is in no small part due to the assistance, advice, and co-operation of Bill Pekonen, my predecessor. Bill made every effort to ensure that the transition was as seamless as possible.

In the 12 months that I have edited our journal, I have attempted to encourage more members of our Society to submit articles for publication. Those efforts have resulted in the addition of several new authors to our line-up of writers. We will continue our efforts to bring fresh ideas and the latest available philatelic news and views to our members.

I believe that members, in general, agree with me that information technology and the Internet in particular continue to have a major impact on our hobby. The new column penned by Robin Harris will go some way in addressing this issue.

Our contributing writers, for the most part, are submitting their copy and artwork electronically. This step has eliminated the need for typesetting. With the elimination of this intermediate step the potential for typographical errors creeping into the final copy has been reduced.

Probably the most significant change introduced during the past 12 months was the addition of eight pages to the magazine. This change has brought a favourable response from members. These additional pages allow us to print material with less delay, as well as help clear up some of the backlog that was beginning to build up. More importantly, they make possible the inclusion of a fair number of philatelic articles even in issues where a substantial part of the journal has to be dedicated to special Society business such as the publication of the biographical sketches of the new slate of directors running for office, entry form applications and instructions for exhibitors, annual convention coverage, and similar items.

Although we have taken some positive steps aimed at improving the quality of the magazine, much remains to be done to make it a truly world-class philatelic publication that will make it more attractive to new readers and, we hope, new members to the Society.

Recruiting new writers for the journal continues to be a challenge but one that, I believe, can be met.

I also believe that Society members deserve greater clarity of our policy dealing with previously published material.

Although the three-way division of editorial duties among National Office, Trajan Publishing, and your editor works well,

Étant donné que la plupart de nos membres n'assistent pas à chaque congrès de La SRPC, j'ai cru utile de publier le rapport que j'ai présenté au conseil d'administration à l'assemblée générale de 2002, tenue à Edmonton. Il donne un aperçu des changements, des activités et des réalisations de l'année écoulée. Il fait aussi ressortir les défis à relever pour que notre bulletin atteigne son summum.

Rapport du rédacteur 2001-2002

Je suis heureux de soumettre au conseil d'administration de la Société royale de philatélie du Canada, mon premier rapport en tant que rédacteur *du Philatéliste canadien*.

C'est en grande partie grâce à l'aide, aux conseils et à la coopération de Bill Pekonen, mon prédécesseur, que les dates de tombée ont pu être respectées durant la période de transition. Il a ainsi fait tout son possible pour que celle-ci s'effectue sans anicroches.

Pendant mes douze mois en tant que rédacteur de notre magazine, je me suis efforcé d'encourager les membres de la Société à être plus nombreux à soumettre des articles pour fin de publication. Le résultat de ces efforts s'est concrétisé en une liste d'auteurs toujours plus longue. Dès lors, nous continuerons à essayer d'insuffler des idées neuves à nos lecteurs et à leur faire part des dernières nouvelles et réflexions du monde philatélique.

Je crois que la majorité de nos membres, tout comme moi, sont d'avis que la technologie de l'information, et en particulier Internet, continue d'avoir une influence considérable sur notre passe-temps. La nouvelle rubrique de Robin Harris s'en fera l'écho.

La plupart de nos auteurs soumettent leurs textes ou leurs illustrations de façon électronique, ce qui a éliminé l'étape de la composition, réduisant ainsi les chances que ne se glissent des erreurs typographiques dans le manuscrit final.

Le plus grand changement survenu durant les douze derniers mois a été l'ajout de huit pages au magazine. Accueillies favorablement, ces pages supplémentaires nous permettent d'imprimer le matériel reçu dans un délai moindre et même de faire disparaître ce qui s'est accumulé sur les tablettes. Plus important encore, nous pouvons maintenant inclure bon nombre d'articles de philatélie dans les numéros dont une grande partie de l'espace disponible est destinée aux affaires de la Société telles la publication d'une courte biographie des nouveaux candidats aspirant à une fonction de direction, les formulaires de participation et les instructions destinés aux exposants ainsi que la couverture de la convention annuelle ou d'autres articles semblables.

Même si des pas importants ont été faits pour l'amélioration de la qualité de notre magazine, il reste encore beaucoup à faire pour qu'il soit vraiment une publication de niveau international, attrayante pour les nouveaux lecteurs qui, nous l'espérons, deviendront de nouveaux membres de la Société.

Le recrutement de nouveaux auteurs s'avère un défi, mais un défi qui, je crois, peut être relevé.

Je crois aussi que les membres de la Société ont droit à des éclaircissements sur notre politique quant au matériel ayant déjà été publié.

Bien que la division en trois parties des responsabilités de rédaction entre le bureau national, Trajan Publishing et votre rédacteur fonctionne bien, leurs tâches spécifiques ne sont pas bien comprises

the specific duties of each is not well understood by members. Volunteers at the club level, responsible for getting their show dates published in a timely manner, do not seem to have a clear understanding of the division of these responsibilities.

In closing, let me apologize to the Board for not having been able to deliver my report in person due to a previous family commitment.

Finally, I would like to thank the staff at National Office and Trajan Publishing for their assistance in getting each issue published in a timely and professional manner. Without their dedicated commitment, our journal would not long remain the first-rate publication it has become.

Respectfully submitted,

Tony Shaman

Editor

March 22, 2002

par nos membres. Les bénévoles des clubs qui doivent faire publier à temps les dates de leurs expositions ne semblent pas bien saisir la répartition de ces responsabilités.

Pour terminer, permettez-moi de m'excuser auprès du conseil car des responsabilités familiales m'ont empêché de remettre mon rapport en main propre.

Finalement, j'aimerais remercier le personnel du bureau national et de Trajan Publishing pour le soutien apporté afin que chaque numéro respecte ses dates de tombée et soit de qualité professionnelle. Sans leur dévouement notre magazine ne resterait pas longtemps la publication de premier ordre qu'il est devenu.

Avec tous mes respects,

Tony Shaman

éditeur

22 mars, 2002



WHAT SHOULD THIS LOGO MEAN TO YOU?

This logo is your assurance that a dealer has met the high standards of the Canadian Stamp Dealers' Association.

You would be surprised how many questions we get from collectors about philatelic transactions. Unfortunately, we can only help in those cases where the dealer is a member of the Canadian Stamp Dealers' Association.

Our Members are bound by a strict Code of Ethics and, while we support and protect our members when they are in the right, we will do all that we can to assist collectors when our members are not.

Look for the dealer displaying this logo. Whether you are buying or selling, this is the person you should be dealing with.

For more information contact the:
Canadian Stamp Dealers' Association
 P.O. Box 1123, Adelaide Street Post Office
 Toronto, ON M5C 2K5
 Visit us on line at www.csdonline.com

DEPARTMENTS and COMMITTEES / SERVICES et COMITÉS

Anti-Theft Committee / Comité anti-vol

Chairman/Président: F. Warren Dickson, 803 Yonge St., Suite 108, Willowdale, ON M2M 3V5

En français: Richard Gratton, FRPSC, C.P. 202, Windsor, QC J1S 2L8
 Western/l'Ouest: Col. William G. Robinson, FRPSC, 301-2108 West 38th Ave., Vancouver, BC V6M 1R9

Canada Post Liaison / Liaison avec Postes Canada

Charles J.G. Verge, FRPSC, Box 2788, Stn. D. Ottawa, ON K1P 5W8
 vergec@sympatico.ca

Rick Penko, Box 1425, Winnipeg, MB R3C 2Z1 rick_penko@hotmail.com

Chapter Liaison / Liaison avec les chapitres

Vacant

Complaints Committee / Comité des plaintes

Col. William G. Robinson, FRPSC, 301-2108 West 38th Ave., Vancouver, BC V6M 1R9

Conventions and Exhibitions / Conventions et expositions

Dr. J.G. McCleave, 1886 Willingdon St., Fredericton, NB E3B 3A5
 mccleave@nbnet.nb.ca

Historian / Historien

Charles J.G. Verge, FRPSC, Box 2788, Stn. D. Ottawa, ON K1P 5W8
 vergec@sympatico.ca

Insurance Plan / Plan d'assurances

Hugh Wood Canada Ltd., 4120 Yonge St., Suite 201, Toronto, ON M2P 2B8

Judging Program / Program des juges

Dr. John M. Powell, FRPSC, 5828 143rd Street, Edmonton, AB T6H 4E8
 mpowel3@attglobal.net

Medals and Awards / Médailles et prix

Raymond Ireson, 86 Cartier, Roxboro, QC H8Y 1G8

National Office / Bureau national

Andrew D. Parr, Executive Director / Directeur exécutif
 P.O. Box / C.P. 929, Station, Succ Q Toronto, ON M4T 2P1, CANADA
 Tel/Tél: (416) 979-8874, 1-888-285-4143 Fax/Télépr: (416) 979-1144
 info@rpsec.org www.rpsec.org

Public Relations / Relations publiques

Michael Nowlan, 514 Gardiner St., Ormococto, NB E2V 1G3
 mgnowlan@nb.sympatico.ca

Sales Circuit / Carnets de timbres en approbation

Sandra Foss, Box 1109, Cochrane, AB T4C 1B2 rpscscsale@cadvision.com

Slide Program / Diapotheque

Elizabeth Sodero, 831 Tower Rd., Halifax, NS B3H 2Y1
 sodero@ns.sympatico.ca

Special Advisor to the President / Conseillère spéciale auprès du Président

Ann Trigg, 4865 Spaulding Dr., Clarence, NY 14031, USA
 atriggle@buffalo.edu

The Canadian Philatelist / Le philatéliste canadien

P.O. Box/C.P. 929, Station/Succ Q, Toronto, ON M4T 2P1
 Editor / Rédacteur Tony Shaman, PO Box 43103, Eastwood Square, Kitchener, ON N2H 6S9 shaman@smokesignal.net
 Advertising: Cyndi Hood (905) 646-7744 ext. 224 magazine@trajan.ca

Website / Site internet

D. Robin Harris, rharris@adminware.ca

Youth Education / Éducation de la jeunesse

Dr. John M. Powell, FRPSC, 5828 143rd St., Edmonton, AB T6H 4E8
 mpowel3@attglobal.net

LIST OF ADVERTISERS / LISTE DES ANNONCEURS

207	BNAPS	171	Firby Auctions
199	Brigham Auctions	181	Greenwood Stamp Co.
cover	Canada Post	191	Lighthouse Publications
197	Canadian Philatelic Society	cover	Maresch, R. & Son
	of Great Britain	191	Mark-Lane
221	Canadian Stamp	192	Osborne Philatelist
	Dealers' Association	201	Postal History
208	Canadian Stamp News		Society of Canada
166	Classifieds /	218	RPSC Sales Circuit
	Annonces classées	195	Saskatoon Stamp Centre
175	Eastern Auctions	183	Van Dam, E.S.J.

Classifieds / Annonces classées

ACCESSORIES / ACCESSOIRES

STOCKBOOK sale. 9"x12" White Pages, Glas-sine Strips & Interleaving: 16 pages \$7.99, 32 pages \$12.99, 64 pages \$26.50. 9"x12" Black Pages, Clear Strips, Glassine Interleaving: 16 pages \$9.95, 32 pages \$18.95, 64 pages \$32.50. All by Lighthouse. Taxes & postage extra. Visa, M/C. Specials on all other brands of albums and accessories. Only from F.v.H. Stamps, #102-340 W. Cordova St., Vancouver, BC V6B 1E8. Ph. (604) 684-8408, fax (604) 684-2929, e-mail: FvHSTAMPS@aol.com.

SouthSeas Correspondence Club for worldwide pen pals and philatelic contacts. \$7U.S. yearly. Contact L.K. Stoddart, Box 38, Alaminos, Pan-gasinan 2404, Philippines.

AUCTIONS / ENCHÈRES

13 YEARS of weekly, unreserved, all-consign-ment in-store auction sales. No extra buyer's fees or charges for use of credit cards. Cata-logues and Special Newsletter mailed monthly. F.v.H Stamps #102-340 W. Cordova St., Van-couver, BC V6B 1E8. Ph. (604) 684-8408, fax (604) 684-2929, e-mail: FvHSTAMPS@aol.com.

BRITISH COMMONWEALTH / COMMONWEALTH BRITANNIQUE

BRITISH COMMONWEALTH, Canada, New-foundland, USA mint and used stamps at below catalogue prices. No GST. Free price lists. Want lists welcome. Reg's Stamps, Box 26129, Nepean, ON K2H 9R6, Canada.

GOOD SELECTION of sets and singles, mint and used. Personal, prompt service, with fair prices. Please state interests. Active buyer. Polaris Stamps, Box 2063, Stn. A, Sudbury, ON Canada P3A 4R8; (705) 566-0293; e-mail: dan.mcinnis@sympatico.ca.

WIDEST CANADA, Australia, United States, Great Britain choices. FREE lists sent next day. We specialize, you fill the gaps. Robert Millman, 105-6655 Lynas Lane, Richmond, BC V7C 3K8. Phone (604) 241-1948, or fax (604) 594-4155. E-mail: rmillman@hotmail.com.

CANADA

CANADA AT 50% OFF (most). Excellent selec-tion of mint and used, coils, FDC, FFC, RPO Cov-ers, Ontario covers, fancy cancels, etc. Active buyer. Polaris Stamps, Box 2063, Stn. A, Sudbury, ON Canada P3A 4R8; Phone: (705) 566-0293; e-mail: dan.mcinnis@sympatico.ca.

CANADA, NEWFOUNDLAND, PROVINCES. Free 36-page price list to serious collectors. Competitive prices, prompt service. Philip Horowitz, (Since 1956), Box 6595, Delray, FL 33482 USA, e-mail: PSHorowitz@aol.com.

FOR SALE / À VENDRE

BEGINNERS SPECIAL. Provincial flowers #417-429A MNH set only \$1.00. Satisfaction uncon-ditionally guaranteed. Free illustrated price list discounting current catalogs. P.E. Stamps, 130 Wallace Avenue, Suite 106, Toronto, ON, Canada M6H 1T5.

PHILATELIC PEWTER PINS, commemorating various FIP World Philatelic Exhibitions including, CAPEX '96; AEROFIL '96 (Buenos Aires, Ar-gentina); ESPAMER '96 (Seville, Spain); ISTAN-BUL '96 (Istanbul, Turkey); PACIFIC '97 (San Francisco, California); VAPEX '98 (75th Anniver-sary of the American Air Mail Society at Virginia Beach, Virginia); and IBRA '99 (Nüremberg, Ger-many). Pins are \$5 Cdn. each, plus \$2 postage, all taxes included. Personal cheques are wel-come. Contact Major RK Malott, Ret'd, 16 Har-wick Crescent, Nepean, ON K2H 6R1, Canada. Phone: (613) 829-0280 or fax: (613) 829-7673.

POSTAL HISTORY Royal Canadian Naval 1939-45 Volume IV updates listing previous volumes, 138 pages \$29.95 plus \$5.00 postage, \$7.00 U.S. Volumes I, II, III available \$22.95 each. Postage \$8 if all three ordered. M. Hampson 12108-53 St., Edmonton, AB T3W 3L9.

SPECIAL FIRST DAY COVERS, for philatelic items not handled by Canada Post Corporation for FDC service – aerograms, postal stationery size 8 & 10 envelopes, whole booklets of any type attached to envelopes of appropriate size, FIP souvenir cards no longer produced, and Na-tional Habitat Series. Write to Major RK Malott, Ret'd, 16 Harwick Crescent, Nepean, ON K2H

6R1, Canada, for list of want items available and prices.

U.S. MIXTURE on paper, unsorted. \$5.00 per pound plus postage. (705) 746-9898.

FOREIGN / ÉTRANGER

WIDE SELECTION of countries. Many sets and singles, both mint and used in stock. I offer quick, personal service combined with reason-able prices. Please state your requirements. Ac-tive buyer. Polaris Stamps, Box 2063, Stn. A, Sudbury, ON Canada P3A 4R8; (705) 566-0293; e-mail: dan.mcinnis@sympatico.ca.

MAIL BID SALES / VENTES PAR LA POSTE

FREE CATALOGUE. Canada, U.S., Common-wealth, Worldwide. No 10 per cent surcharge. Friendly, personal service. Order today. LBJR, Box 264, Nelson, BC V1L 5P9.

QUARTERLY MAIL AUCTIONS – Canada, United States, Commonwealth, Worldwide. Free Catalogue. RPSC, ASDA, APS. North Jersey Stamp Auctions, P.O. Box 626, West Haverstraw, N.Y. 10973, USA. Telephone or Fax (845) 362-5330.

TOPICALS / THÉMATIQUES

ANIMALS, flowers, ships, birds, space, trains, medical, lighthouses, cats, commemoratives of all sorts. For free price list (stamps, coins), write Ronalea Collectibles, Box 130U, Plumas, NB ROJ 1P0.

WANTED / RECHERCHÉ

NEWFOUNDLAND WWI COVERS, soldiers' mail, postcards; WWI/WWII stamp proofs / es-says. Approvals acceptable. D. Mario, Box 342, Saskatoon, SK S7K 3L3.

ROYAL WILLIAM #204 on cover, single or mixed franking. No FDCs. Phone/fax (902) 678-7896. A. Kalkman, 157 Morris Cr., Kentville, NS B4N 3V8.

UNITED STATES: Southern Pacific Railroad or Western Pacific Railroad covers postally used entires. Railroad Post Office usage from above two RRs. Usage to Canada a plus!!! Bob Combs, Box 220, Tome, New Mexico 87060 USA. E-mail trainman@abq.com.

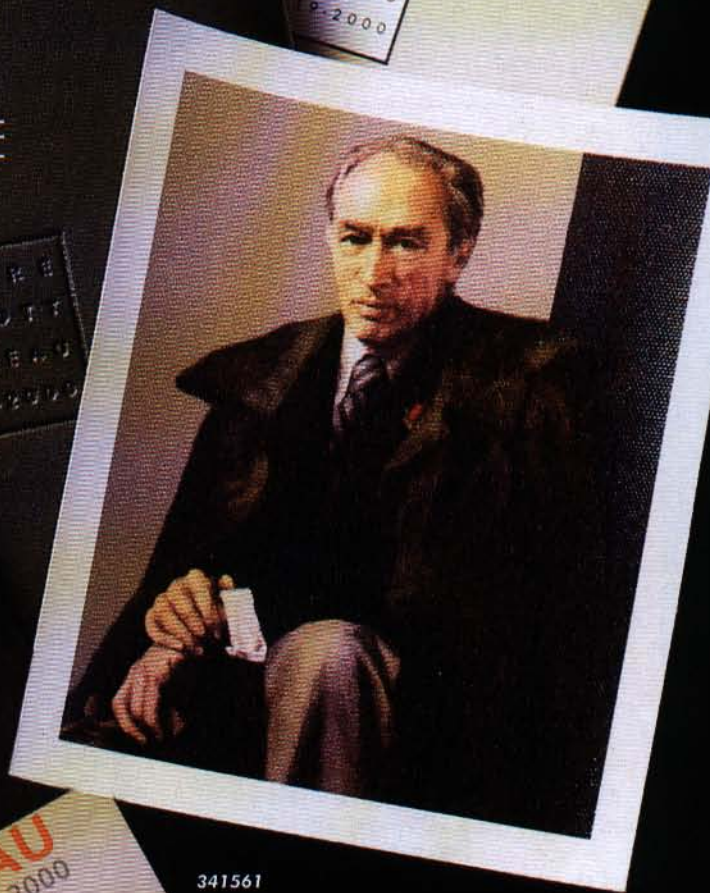
CLASSIFIEDS SELL

To place a
classified advertisement,
check out page 150
in this issue.

LES ANNONCES CLASSÉES VENDENT

Pour placer une annonce
voir la page 150
de ce magazine.

PORTRAIT OF A PRIME MINISTER
PIERRE ELLIOTT TRUDEAU
PORTRAIT D'UN PREMIER MINISTRE
PIERRE ELLIOTT TRUDEAU



341561

\$34.95 ◀

Join Canada Post in celebrating the extraordinary life and career of Canada's 15th prime minister. This limited-edition commemorative tribute features a reproduction of artist Myfanwy Pavelic's portrait of Mr. Trudeau; a portrait which hangs in Ottawa's Parliament Buildings.

Voici un magnifique souvenir de Pierre Elliott Trudeau, 15^e premier ministre du Canada. Proposé par Postes Canada, cet ensemble commémoratif, produit en nombre limité, présente un portrait de M. Trudeau réalisé par Myfanwy Pavelic. L'œuvre originale est exposée dans le Parlement, à Ottawa.

- Each of the 20,000 sets includes:
- a souvenir sheet of four stamps issued by Canada Post
 - a mini-reproduction portrait on actual canvas
 - a tribute card that gives details of the original portrait and is affixed with a single stamp cancelled on the day of issue
 - a leather-style protective folio embossed with Mr. Trudeau's personal coat of arms (155 mm x 180 mm)

- Chacun des 20 000 ensembles commémoratifs comprend :
- un feuillet de quatre timbres émis par Postes Canada;
 - une reproduction miniature sur toile du portrait;
 - une fiche d'information sur le portrait original, agrémentée d'un timbre seul portant le cachet d'oblitération Premier Jour;
 - une pochette en similicuir ornée des armoiries de Pierre Elliott Trudeau. (155 mm x 180 mm)

Portrait: Myfanwy Pavelic, House of Commons Collections / Portrait: Myfanwy Pavelic, collections de la Chambre des communes

CALL TO ORDER
(7 A.M. TO 7 P.M. ET)

Also available at participating postal outlets or by mail from:
NATIONAL PHILATELIC CENTRE
CANADA POST
75 ST. NINIAN ST.
ANTIGONISH NS B2G 2R8
www.canadapost.ca



From anywhere... De partout...
to anyone jusqu'à vous

1 800 565-4362



Plus applicable taxes / Taxes en vigueur en sus

POUR COMMANDER, VOUS POUVEZ APPELER
de 7 h à 19 h, HE

On peut aussi se procurer ces produits à certains comptoirs postaux ou les commander en écrivant au
CENTRE NATIONAL DE PHILATÉLIE
POSTES CANADA
75 RUE ST. NINIAN
ANTIGONISH NS B2G 2R8
www.postescanada.ca



Celebrating 75 years in the stamp business

As Canada's Premier Auction house we always have something new and interesting

When selling your collection our auctions will maximize your results

Please call or write us for a complimentary catalogue

r. maresch & son

DEALERS IN FINE STAMPS SINCE 1924

330 BAY ST., SUITE 703 TORONTO, ON M5H 2S8 CANADA
☎ (416) 363-7777 www.maresch.com FAX (416) 363-6511